

REVISIONS				
REV.	ZONE	DESCRIPTION	DATE	DRAWN

AMP PLUG, 206044-1 (ECK131)  
 AMP BACKSHELL, 206070-1 (ECK134)  
 #16-18 PINS, 66098-7 (EJK194)

ALPHA #5440/4  
 ALPHA #1452/16 OR CONSOLIDATED #1707

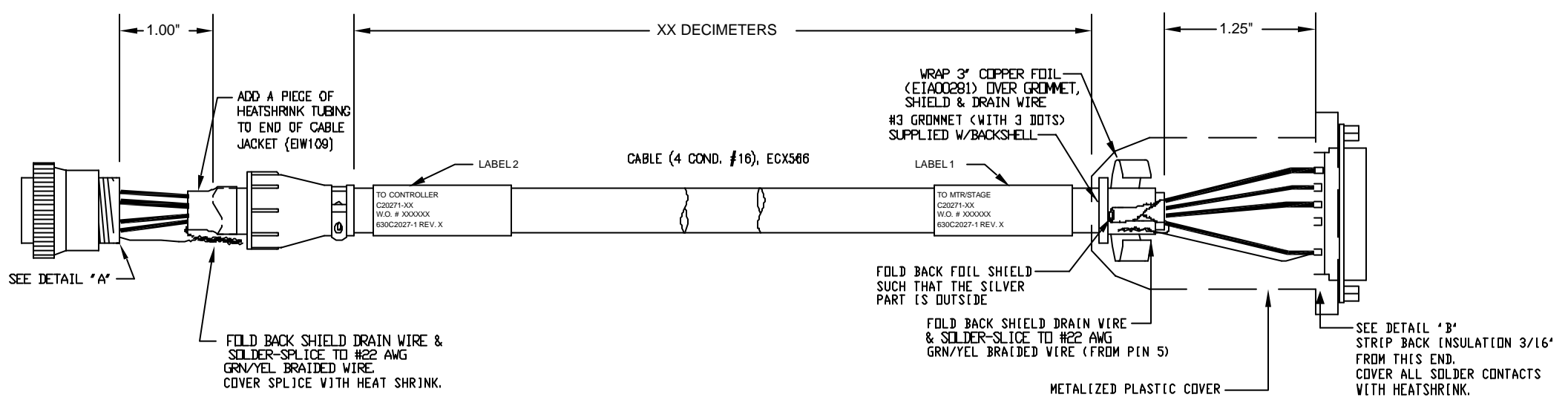
PIN	WIRE	WIRE	SIGNAL
14	-	-	-
13	-	-	-
12	-	-	-
11	-	-	-
10	-	-	-
9	-	-	-
8	SHIELD	SHIELD	MTR SHLD
7	-	-	-
6	-	-	-
5	BRN	WHT	MTR Ø C
4	RED	RED	MTR Ø B
3	BLK	BLK	MTR Ø A
2	-	-	-
1	ORN	GRN	FRM GND

(1) HIGH POWER FEMALE "D", ECK01229  
 (5) SOCKET CONTACT: (20AMP), ECK00659  
 (1) BACKSHELL, ECK00656  
 REMOVE PEMNUTS,  
 INSTALL JACKSOCKETS ECK00129

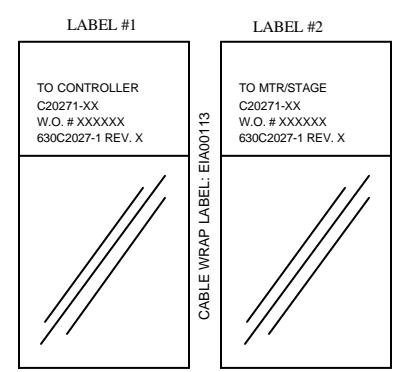
ALPHA #5440/4  
 ALPHA #1452/16 OR CONSOLIDATED #1707

SIGNAL	WIRE	WIRE	SOCKET
MTR Ø A	BLK	BLK	1
MTR Ø B	RED	RED	2
MTR Ø C	WHT	BRN	3
-	-	-	4
FRM GND	GRN	ORN	5
MTR SHLD	SHIELD	SHIELD	5

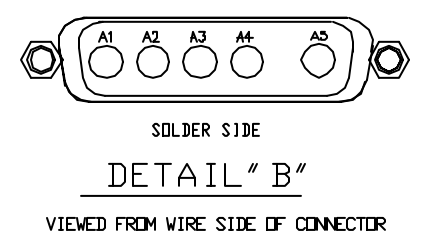
CABLE (4 COND. #16), ECX566



LABELS FOR  
 C20271 CABLES:  
 (2) REQUIRED,  
 (1 AT EACH END)



HI POWER "D" 5-PIN FEMALE (ECK01229) DETAILS



PROPRIETARY INFORMATION THIS DRAWING IS THE PROPERTY OF AEROTECH, INC. AND IS SUBMITTED IN CONFIDENCE AND SHALL NOT BE REPRODUCED NOR COPIED NOR DISCLOSED TO OTHERS UNDER PENALTY OF LAW.		
<b>TOLERANCES UNLESS OTHERWISE SPECIFIED</b> FRACTIONS: ±0.0005 DECIMALS: ±0.001 ANGLES: ±0.5°		
RMS FINISH	EXCEPT AS NOTED	
DRAWN	RWR	12/11/03
CHECKED	AGS	12/11/03
APPD.	AGS	12/11/03

**AEROTECH**  
 AEROTECH, INC. 101 Zeta Drive  
 Pittsburgh, PA. 15238  
 (412)963-7470  
 www.aerotech.com

**ADAPTER CABLE**  
 14 PIN ROUND TO 5 PIN HI-PWR D  
 BL MTR-14P-5DU-MAX450DM

PART CODE	SIZE	REV.
C20271-XX	C	-
630C2027-1		
SCALE	FILE NAME	SHEET
NTS	630C2027-101.DWG	1 OF 1