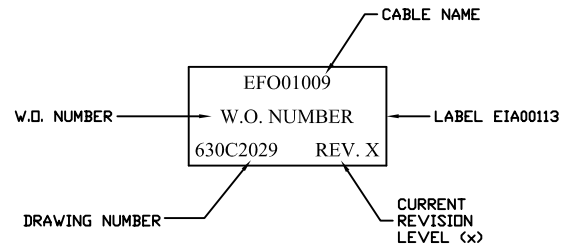
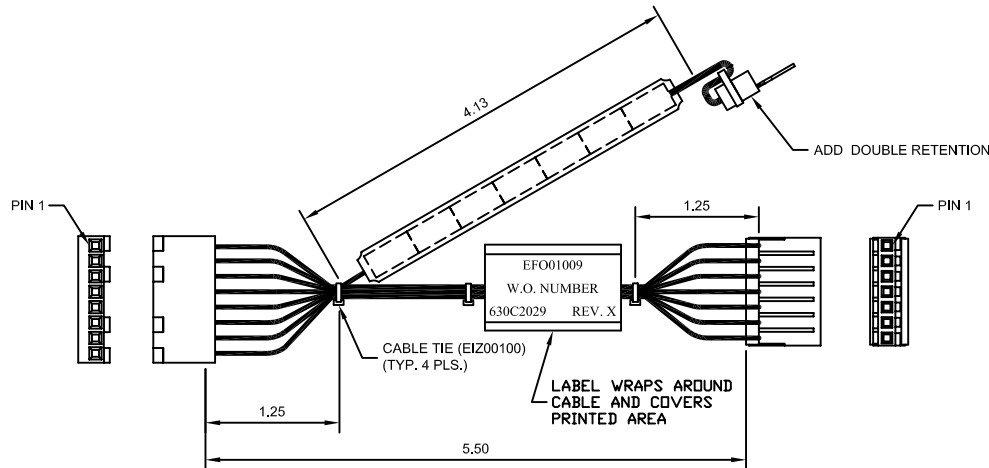
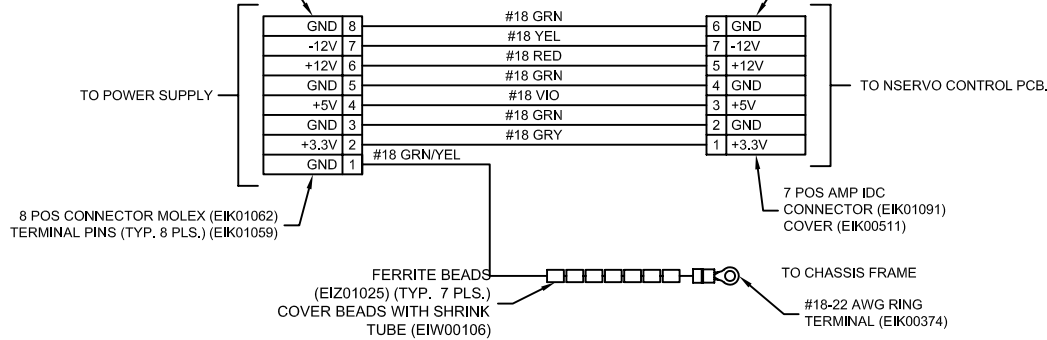


REVISIONS				
REV.	ZONE	DESCRIPTION	DATE	DRAWN
A		ADDED ECN7889A	11/05	SMN


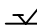
NOTE: CONNECTOR PIN NUMBERS ARE OPPOSITE TO THE POWER SUPPLY. PIN 1 ON CONNECTOR MATES TO PIN 8 ON POWER SUPPLY.

NOTE: CONNECTOR PIN NUMBERS ARE OPPOSITE TO THE CONTROL PCB. PIN 1 ON CONNECTOR MATES TO PIN 7 ON PCB.



- 2) WIRES ARE NOT DIRECT PIN1 TO PIN1 WIRING. REFERENCE PIN NUMBERS IN BLOCK DIAGRAM ABOVE
- 1) DRAWING CAN BE USED AS TEMPLATE.

NOTES:

PROPRIETARY INFORMATION THIS DRAWING IS THE PROPERTY OF AEROTECH, INC. AND IS SUBMITTED IN CONFIDENCE AND SHALL NOT BE REPRODUCED NOR COPIED NOR DISCLOSED TO OTHERS UNDER PENALTY OF LAW.		 AEROTECH, INC. 101 Zeta Drive Pittsburgh, PA. 15238 (412)963-7470 www.aerotech.com					
TOLERANCES ON FRACTIONS DECIMALS ANGLES 0 TO 6 ± 1/32 .XX ± .01 ± 0°-30' OVER 6 ± 1/16 .XXX ± .005							
RMS FINISH  EXCEPT AS NOTED		CABLE: NSERVO POWER SUPPLY TO NSERVO CTRL PCB.					
DRAWN	JRF	12/03	PART CODE	SIZE	630C2029	REV.	A
CHECKED	DES	12/03	EFO01009	C			
APPD.	ARW	12/03	SCALE FULL	FILE NAME	630C2029A1.dwg	SHEET	1 OF 1