

REVISIONS				
REV.	ZONE	DESCRIPTION	DATE	DRAWN

CONNECTOR 25 PIN D MALE AMP #745496-2 (ECK00786)
BACKSHELL #17-1726-2 (ECK00636)

25 PIN D FEMALE PLUG #745495-2 (ECK00789)
BACKSHELL #17-1726-2 (ECK00636)
JACKSOCKET (ECK00129)

682A1031 (ECX00445)
#24 AVG UNLESS OTHERWISE NOTED

PIN	WIRE	SIGNAL
13	DRN	BRK-/CV LMT
12	WHT	CW/+ LMT
11	-	-
10	-	-
9	-	-
8	-	-
7	BRN	MKR
6	BLK	NKR-N
5	-	-
4	-	-
3	#22 WHT/BRN	+5V
2	-	-
1	SHIELD	BIC SHLD
14	WHT/RED	COS
15	VIO	COS-N
16	#22 WHT/BLU	+5V
17	GRN	SIN
18	RED	SIN-N
19	-	-
20	#22 WHT/BRN	COM
21	#22 WHT/YEL	COM
22	PINK	HM LMT
23	YEL	HOME LMT
24	GRY	CSW/- LMT
25	BLU	BRK+/CCW LMT

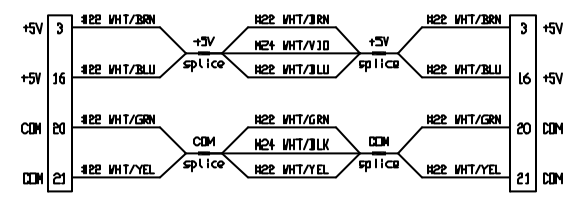
682A1031 (ECX00445)
#24 AVG UNLESS OTHERWISE NOTED

SIGNAL	WIRE	PIN
BRK-/CM LMT	DRN	13
CW/+ LMT	WHT	12
-	-	10
-	-	9
-	-	8
MKR	BRN	7
NKR-N	BLK	6
-	-	5
-	-	4
+5V	#22 WHT/BRN	3
SIC SHLD	SHIELD	1
COS	WHT/RED	14
COS-N	VIO	15
+5V	#22 WHT/BLU	16
SIN	GRN	17
SIN-N	RED	18
-	-	19
COM	#22 WHT/BRN	20
COM	#22 WHT/YEL	21
HM LMT	PINK	22
HOME LMT	YEL	23
CSW/- LMT	GRY	24
BRK+/CCW LMT	BLU	25

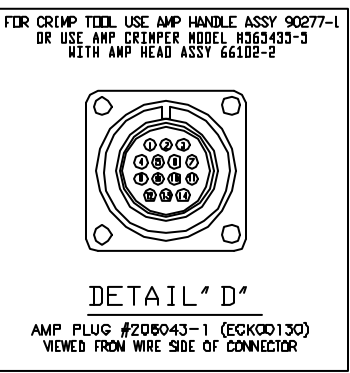
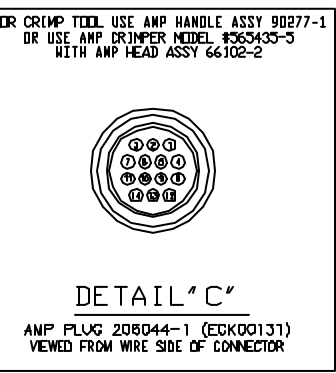
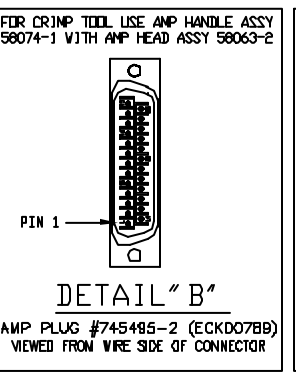
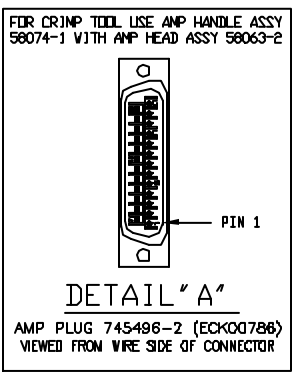
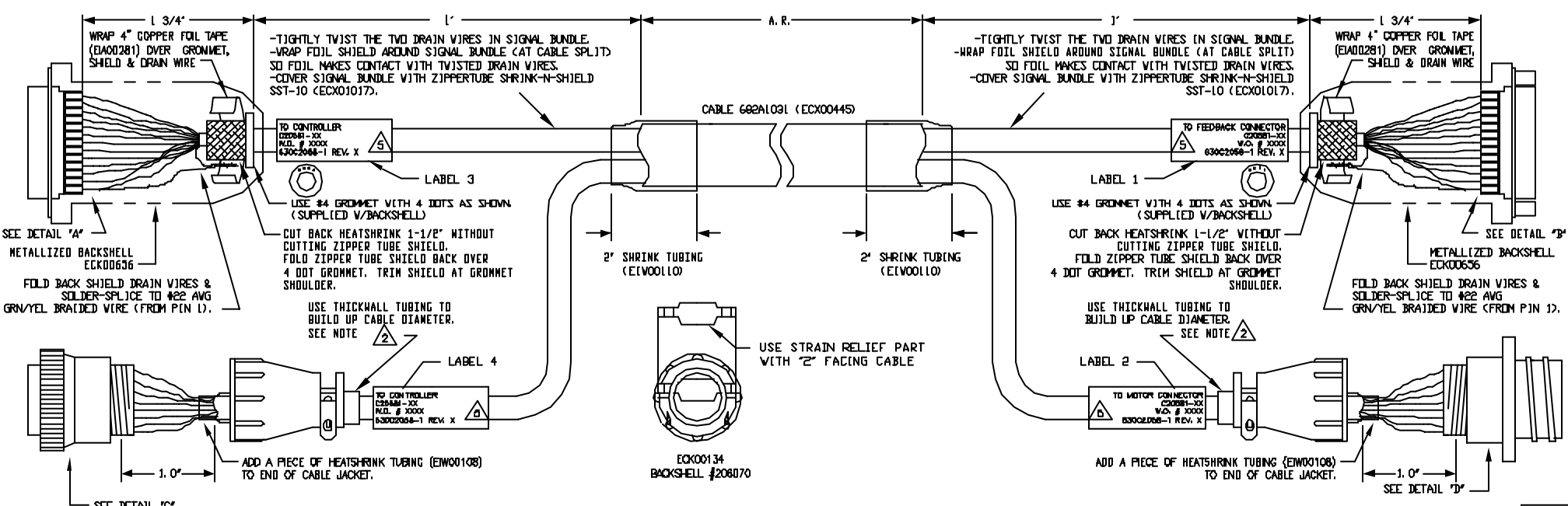
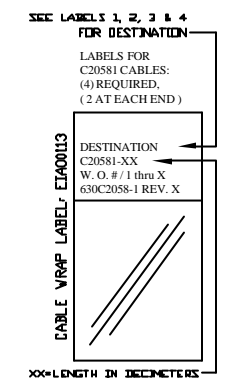
PIN	WIRE	SIGNAL
14	-	BIPOLAR UNIPOLAR
13	-	-
12	-	-
11	-	-
10	-	-
9	-	-
8	SHIELD	MTR SHLD
7	#20 RED	MTR A-N
6	#20 BLU	MTR B
5	#20 DRN	MTR A
4	#20 YEL	MTR B
3	#20 WHT	MTR B-N
2	#20 BRN	MTR A
1	#20 GRN	FRM GND

SIGNAL	WIRE	PIN
UNIPOLAR BIPOLAR	-	14
-	-	13
-	-	12
-	-	11
-	-	10
-	-	9
-	-	8
MTR SHLD	MTR SHLD	8
MTR A'	MTR A-N	7
MTR B'	-	6
MTR A	-	5
MTR B	MTR B	4
MTR BCT	MTR B-N	3
MTR ACT	MTR A	2
FRM GND	FRM GND	1

- STARTING CABLE LENGTH = A.R. LENGTH + 5 IN
- USE 2" LENGTHS OF THICK WALL HEATSHRINK TUBING TO BUILD UP CABLE DIAMETER FOR PROPER STRAIN RELIEFING. STRAIN RELIEFING MUST WITHSTAND 35 LB. PULL.
CUT THICK WALL HEATSHRINK TUBING WITH CABLE CUTTER SUCH THAT ENDS ARE PERPENDICULAR TO CABLE AND CUT IS SMOOTH.
THICK WALL HEATSHRINK TUBING
AMP # 53701-1 (E1V00112) MAX INSIDE DIA = .750" (EXPANDED), MIN INSIDE DIA = .220" (RECOVERED)
AMP # 53700-1 (E1V00113) MAX INSIDE DIA = .400" (EXPANDED), MIN INSIDE DIA = .150" (RECOVERED)
- ACTIVE HIGH SIGNALS FOR USE WITH PREVIOUS GENERATION AEROTECH CONTROLLERS (UNIDEX, UNIDEX 2, UNIDEX 3, UNIDEX 11, UNIDEX 12, UNIDEX 16)
- +5V AND COM WIRING WITH SPLICE CONNECTIONS
SPLICE +5V WIRING AS SHOWN BELOW
SPLICE COM WIRING AS SHOWN BELOW



5 CABLE LABEL DETAILS



PROPRIETARY INFORMATION THIS DRAWING IS THE PROPERTY OF AEROTECH, INC. AND IS SUBMITTED IN CONFIDENCE AND SHALL NOT BE REPRODUCED NOR COPIED NOR DISCLOSED TO OTHERS UNDER PENALTY OF LAW.

TOLERANCES ON FRACTIONS DECIMALS ANGLES
0 TO 6 ±1/32 XX ±.01 ±D-30°
OVER 6 ±1/16 XXX ±.005

RMS FINISH ✓ EXCEPT AS NOTED

DRAWN	6-21-2004	LTL
CHECKED	6-21-2004	AGS
APPD.	6-21-2004	AGS

PART CODE:		C20581-XX		C20581-1 TO -107 MAX LENGTH (DECIMETERS)	
		AEROTECH, INC. 101 Zeta Drive Pittsburgh, PA. 15238 (412)963-7470 www.aerotech.com			
		STEPPING MOTOR EXTENSION CABLE 107 DECIMETERS (35') MAX LENGTH CABLE:SM MTR & FB-25DU 14P-25DU 14P-EX			
PART CODE	SIZE	REV.			
C20581-XX	C	-	630C2058-1		
SCALE	NTS	FILE NAME	630C2058-101.DWG	SHEET	1