

REVISIONS				
REV.	ZONE	DESCRIPTION	DATE	APPROVAL

AMP PLUG, MALE (ECK00101)
BACKSHELL (ECK00656)
OPTIONAL: BACKSHELL, 45 DEGREE (ECK01070)

AMP SOCKET FEMALE (ECK00300)
BACKSHELL (ECK00656)
OPTIONAL: BACKSHELL, 45 DEGREE (ECK01070)

ENCODER CABLE, ECX01126
(12C- 26AWG/4C-24AWG)

ENCODER CABLE, ECX01126
(12C- 26AWG/4C-24AWG)

SOCKET	WIRE	SIGNAL
1	SHIELD	SHIELD
2	#26 WHT/GRN	EXT SD
3	#24 VID	+5V
4	-	-
5	#26 GRN	HB
6	#26 WHT/DRN	MKR-N
7	#26 DRN	MKR
8	-	COM
9	-	-
10	#26 BRN	HA
11	#26 WHT	HC
12	#26 WHT/BRN	CV/+ LMT
13	-	BRAKE-
25	-	BRAKE+
24	#26 WHT/GRY	CCW/- LMT
23	-	ENC FLT
22	#24 RED	HM LMT
21	#24 BLK	COM
20	#24 GRY	COM
19	-	-
18	#26 WHT/BLU	SIN-N
17	#26 BLU	SIN
16	-	+5V
15	#26 WHT/YEL	CDS-N
14	#26 YEL	CDS

SIGNAL	WIRE	SOCKET
SHIELD	SHIELD	1
EXT SD	#26 WHT/GRN	2
+5V	#24 VID	3
-	-	4
HB	#26 GRN	5
MKR-N	#26 WHT/DRN	6
MKR	#26 DRN	7
COM	-	8
-	-	9
HA	#26 BRN	10
HC	#26 WHT	11
CV/+ LMT	#26 WHT/BRN	12
BRAKE-	-	13
BRAKE+	-	25
CCW/- LMT	#26 WHT/GRY	24
ENC FLT	-	23
HM LMT	#24 RED	22
COM	#24 BLK	21
COM	#24 GRY	20
-	-	19
SIN-N	#26 WHT/BLU	18
SIN	#26 BLU	17
+5V	-	16
CDS-N	#26 WHT/YEL	15
CDS	#26 YEL	14

UNUSED WIRES (ECX01126): NONE

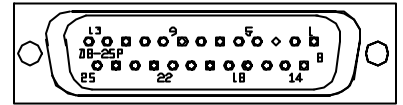
5

4

4

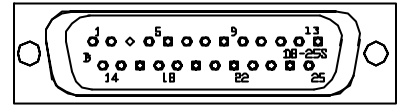
6

DETAIL "A"



VIEWED FROM WIRE SIDE OF CONNECTOR
"D" MALE CONNECTOR (ECK00101)

DETAIL "B"



VIEWED FROM WIRE SIDE OF CONNECTOR
"D" FEMALE CONNECTOR (ECK00300)

1

USE #5 GROMMET WITH 5 DOTS AS SHOWN BELOW WHICH IS SUPPLIED V/BACKSHELL



2

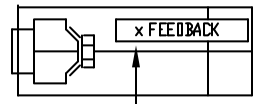
STARTING CABLE LENGTH = 6" LONGER THAN A. R. LENGTH.

3

FOR CRIMP TOOL USE AMP HANDLE ASSY 58074-1 WITH AMP HEAD ASSY 58063-2

4

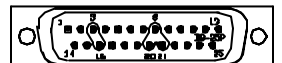
OPTIONAL: "D" BACKSHELL LABELS BACKSHELL LABELS TO BE USED IN MULTI-AXIS SYSTEMS LABELS TO BE ADDED BY STAGE WIRING DEPARTMENT.



LABEL BOTH SIDES OF THE CONNECTOR

5

ADD COMMONING STRIPS TO MALE CONNECTOR. (3-16, 8-20-21) SEE BELOW



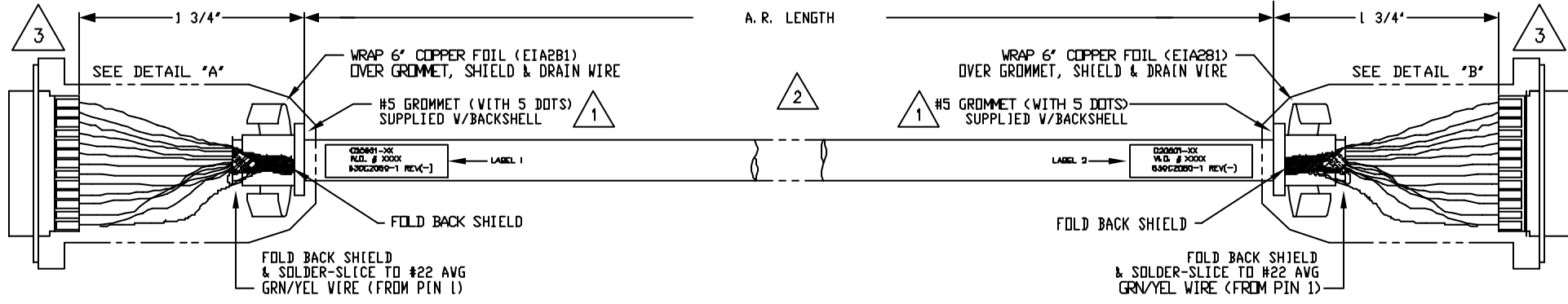
VIEWED FROM CONTACT SIDE OF CONNECTOR
FEEDBACK CONNECTOR COMMONING STRIP

6

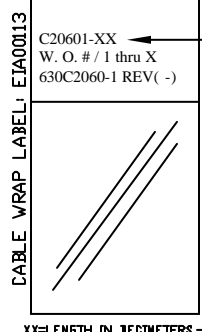
ADD JUMPERS FROM PIN 3 TO 16 & PIN 20 TO 21 FEMALE CONNECTOR. SEE BELOW



VIEWED FROM WIRING SIDE OF CONNECTOR
FEEDBACK CONNECTOR JUMPERS



LABELS FOR CABLES:
C20601-XX
(2) REQUIRED,
(1 AT EACH END)



PROPRIETARY INFORMATION
THIS DRAWING IS THE PROPERTY
OF AEROTECH, INC. AND IS
SUBMITTED IN CONFIDENCE AND
SHALL NOT BE REPRODUCED NOR
COPIED NOR DISCLOSED TO OTHERS
UNDER PENALTY OF LAW.



AEROTECH, INC. 101 Zeta Drive
Pittsburgh, PA. 15238
(412)963-7470
www.aerotech.com

TOLERANCES ON
FRACTIONS DECIMALS ANGLES
0 TO 6 ± 1/32 .XX ± .01 ± 0-30'
OVER 6 ± 1/16 .XXX ± .005

RMS FINISH ✓ EXCEPT AS NOTED

DRAWN	6-26-2004	LTL
CHECKED	6-26-2004	AGS
APPD.	6-26-2004	AGS

PART CODE:	C20601-XX	C20601-1 TO 10, MAX LENGTH (DECIMETERS)
------------	-----------	---

FEEDBACK ADAPTOR CABLE
10 DECIMETERS MAX LENGTH
CABLE: BL FB-25DU-25DU-HF-ADP

PART CODE	SIZE	REV.
C20601-XX	C	630C2060-1
SCALE NTS	FILE NAME	SHEET
	630C2060-101.DWG	1