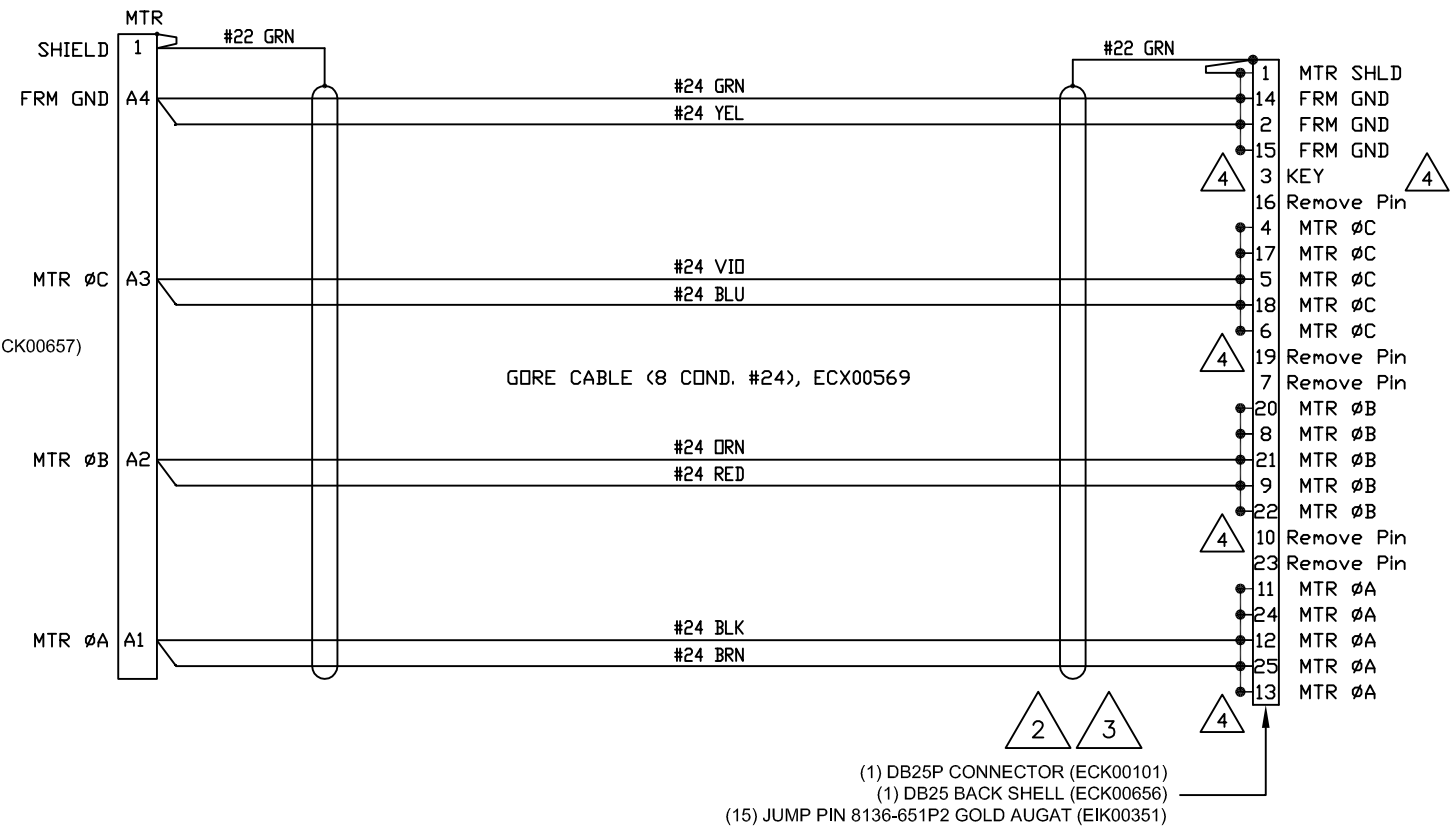
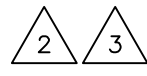
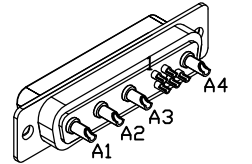


REVISIONS				
REV.	ZONE	DESCRIPTION	DATE	APPROVAL
A	-	ECN #10236	6/8/07	JAB

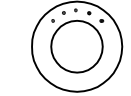
- (1) DB25S HIGH POWER D-CONNECTOR (ECK00657)
- (4) SOCKET CONTACTS (ECK00659)
- (1) DB25 BACK SHELL (ECK00656)



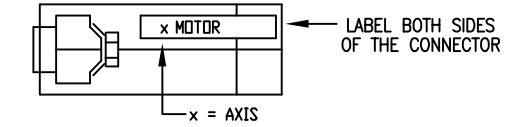
- (1) DB25P CONNECTOR (ECK00101)
- (1) DB25 BACK SHELL (ECK00656)
- (15) JUMP PIN 8136-651P2 GOLD AUGAT (EIK00351)

1 STARTING CABLE LENGTH = 6" LONGER THAN A. R. LENGTH.

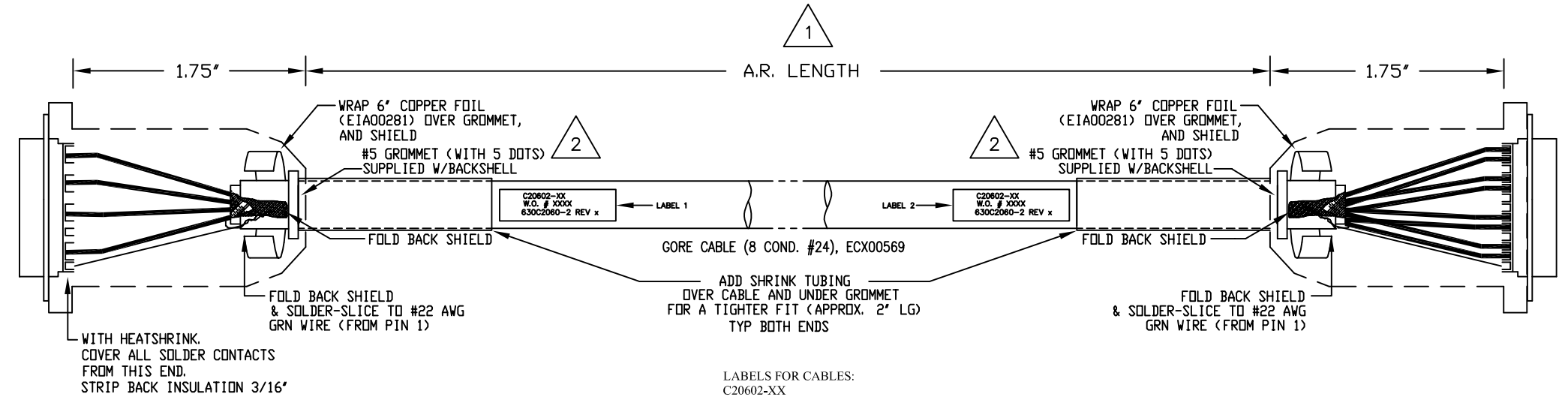
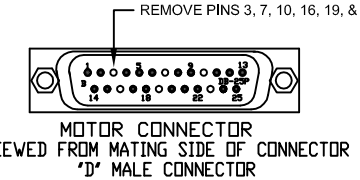
2 USE #5 GROMMET WITH 5 DOTS AS SHOWN BELOW WHICH IS SUPPLIED W/BACKSHELL



3 OPTIONAL: 'D' BACKSHELL LABELS BACKSHELL LABELS TO BE USED IN MULTI-AXIS SYSTEMS LABELS TO BE ADDED BY STAGE WIRING DEPARTMENT.

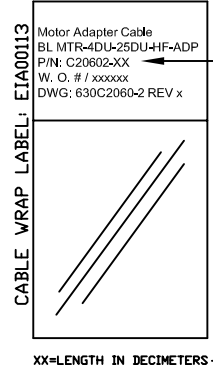


4 DB25P MOTOR CONNECTOR CONFIGURATIONS REMOVE PINS 3, 7, 10, 16, 19, & 23



WITH HEATSHRINK. COVER ALL SOLDER CONTACTS FROM THIS END. STRIP BACK INSULATION 3/16"

LABELS FOR CABLES:
C20602-XX
(2) REQUIRED,
(1 AT EACH END)



PROPRIETARY INFORMATION THIS DRAWING IS THE PROPERTY OF AEROTECH, INC. AND IS SUBMITTED IN CONFIDENCE AND SHALL NOT BE REPRODUCED NOR COPIED NOR DISCLOSED TO OTHERS UNDER PENALTY OF LAW.



AEROTECH, INC. 101 Zeta Drive
Pittsburgh, PA. 15238
(412)963-7470
www.aerotech.com

TOLERANCES ON		
FRACTIONS	DECIMALS	ANGLES
0 TO 6 ± 1/32	.XX ± .01	± 0-30'
OVER 6 ± 1/16	.XXX ± .005	

RMS FINISH ✓ EXCEPT AS NOTED

MOTOR ADAPTOR CABLE				
DRAWN	CHECKED	APPD.	PART CODE	REV.
6-26-2004	6-26-2004	6-26-2004	C20602-XX	A
SCALE NTS			FILE NAME 630C2060-2A1.DWG	SHEET 1

BL MTR-4DU-25DU-HF-MAX300DM-ADP	SIZE	REV.
C	630C2060-2	A