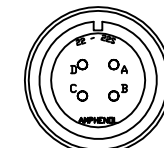
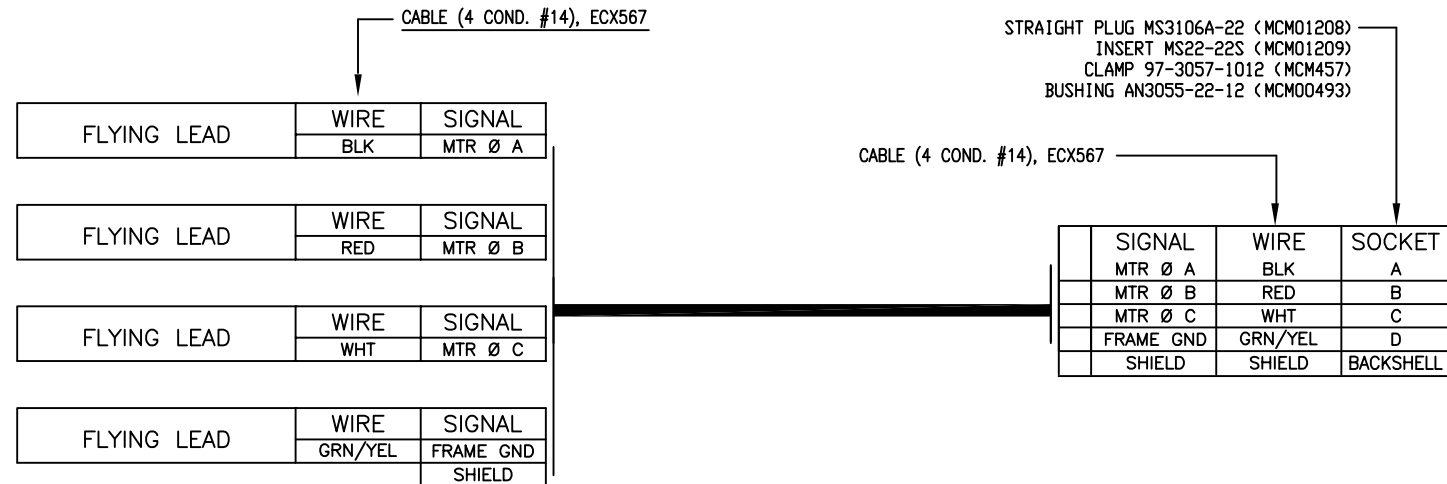
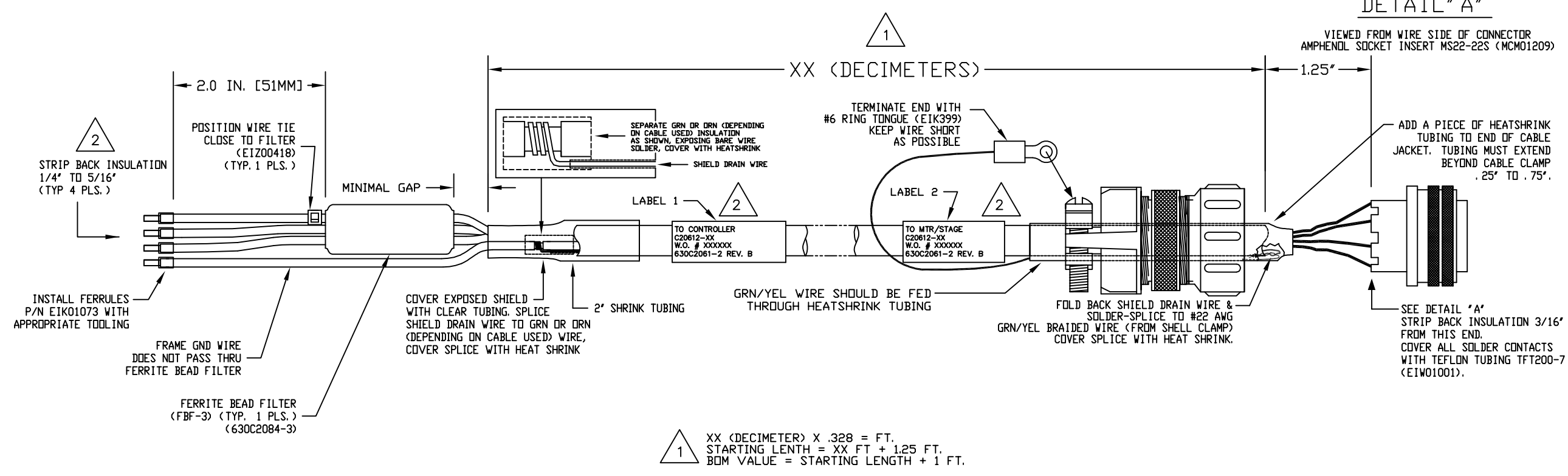


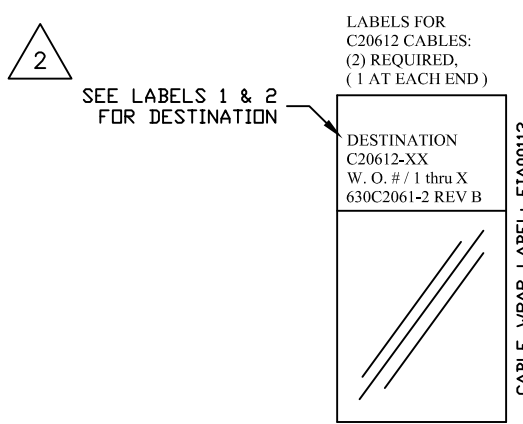
REVISIONS				
REV.	ZONE	DESCRIPTION	DATE	DRAWN
A		ECN13161	2/10/11	MS
B		ADDED ECN13231	3/2011	JFRANEY



DETAIL "A"



1 XX (DECIMETER) X .328 = FT.
STARTING LENGTH = XX FT + 1.25 FT.
BOM VALUE = STARTING LENGTH + 1 FT.



PART CODE:		C20612-XX	C20612-1 TO -450 MAX LENGTH (DECIMETERS)	
<p>PROPRIETARY INFORMATION THIS DRAWING IS THE PROPERTY OF AEROTECH, INC. AND IS SUBMITTED IN CONFIDENCE AND SHALL NOT BE REPRODUCED NOR COPIED NOR DISCLOSED TO OTHERS UNDER PENALTY OF LAW.</p> <p>TOLERANCES ON FRACTIONS DECIMALS ANGLES 0 TO 6 ± 1/32 .XX ± .01 ± 0-30' OVER 6 ± 1/16 .XXX ± .005</p> <p>RMS FINISH <input checked="" type="checkbox"/> EXCEPT AS NOTED</p>				
		<p>AEROTECH, INC. 101 Zeta Drive Pittsburgh, PA. 15238 (412)963-7470 www.aerotech.com</p>		
<p>HIGH POWER BRUSHLESS MOTOR CABLE 450 DECIMETERS (150') MAX LENGTH CABLE: BL MTR-FLB-4MS22-HP1-MAX450DM</p>				
DRAWN	AGS	8/05	PART CODE	REV.
CHECKED	WG	8/05	C20612-XX	B
APPD.	WG	8/05	SIZE	
			C	
SCALE NTS		FILE NAME 630C2061-2B1.dwg		SHEET 1 OF 1