

REVISIONS				
REV.	ZONE	DESCRIPTION	DATE	DRAWN

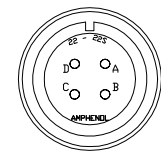
CABLE (4 COND. #10), ECX01239

FLYING LEAD	WIRE	SIGNAL
	BLK 1	MTR Ø A
FLYING LEAD	WIRE	SIGNAL
	BLK 2	MTR Ø B
FLYING LEAD	WIRE	SIGNAL
	BLK 3	MTR Ø C
FLYING LEAD	WIRE	SIGNAL
	GRN	FRAME_GND SHIELD

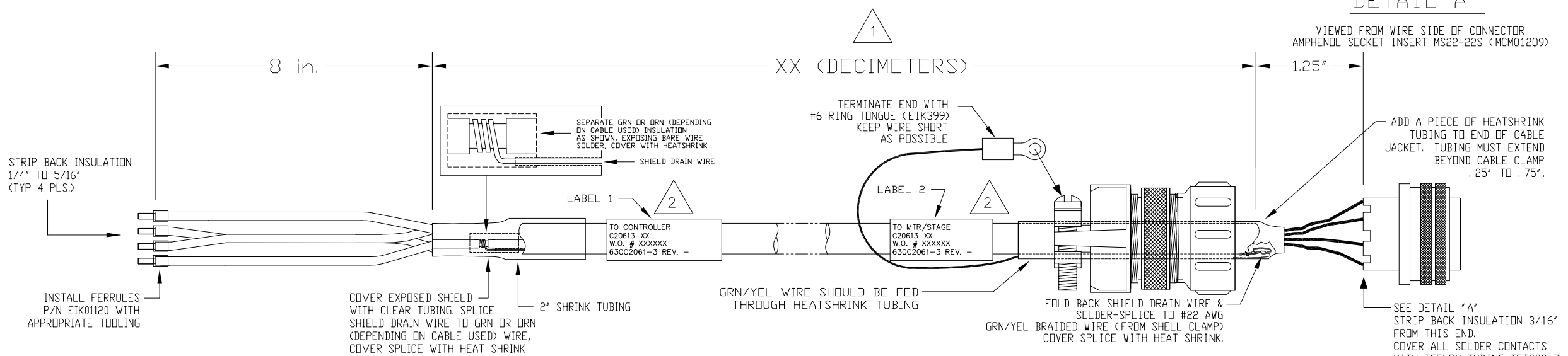
STRAIGHT PLUG MS3106A-22 (MCM01208)  
 INSERT MS22-22S (MCM01209)  
 CLAMP 97-3057-1012 (MCM457)  
 BUSHING AN3055-22-12 (MCM00493)

CABLE (4 COND. #10), ECX01239

SIGNAL	WIRE	SOCKET
MTR Ø A	BLK 1	A
MTR Ø B	BLK 2	B
MTR Ø C	BLK 3	C
FRAME_GND	GRN	D
SHIELD	SHIELD	BACKSHELL



DETAIL "A"



1 XX (DECIMETER) X .328 = FT.  
 STARTING LENGTH = XX FT + 1.25 FT.  
 BOM VALUE = STARTING LENGTH + 1 FT.

2 SEE LABELS 1 & 2 FOR DESTINATION

LABELS FOR C15814 CABLES:  
 (2) REQUIRED,  
 (1 AT EACH END)

DESTINATION  
 C20613-XX  
 W.O. # / 1 thru X  
 630C2061-3 REV -

CABLE WRAP LABEL: EIA00113

PROPRIETARY INFORMATION  
 THIS DRAWING IS THE PROPERTY OF AEROTECH, INC. AND IS SUBMITTED IN CONFIDENCE AND SHALL NOT BE REPRODUCED NOR COPIED NOR DISCLOSED TO OTHERS UNDER PENALTY OF LAW.

TOLERANCES ON FRACTIONS DECIMALS ANGLES  
 0 TO 6 ± 1/32 .XX ± .01 ± 0-30'  
 OVER 6 ± 1/16 .XXX ± .005

RMS FINISH EXCEPT AS NOTED

DRAWN	TES	12/06
CHECKED	AGS	12/06
APPD.	AGS	12/06

PART CODE:  
 C20613-XX C20613-1 TO -450 MAX LENGTH (DECIMETERS)



AEROTECH, INC. 101 Zeta Drive  
 Pittsburgh, PA. 15238  
 (412)963-7470  
 www.aerotech.com

**HIGH POWER BRUSHLESS MOTOR CABLE**  
**450 DECIMETERS (150') MAX LENGTH**  
**CABLE:BL MTR-FL-4MS22-HP3-MAX 450DM**

PART CODE	SIZE	REV.
C20613-XX	C	-
630C2061-3		
SCALE NTS	FILE NAME 630C2061-301.dwg	SHEET 1 OF 1