

REVISIONS				
REV.	ZONE	DESCRIPTION	DATE	DRAWN
~	~	~	~	~

AMP PLUG, 206044-1 (ECK131)
AMP BACKSHELL, 206070-1 (ECK134)
#16-18 PINS, 66098-7 (E1K194)

CABLE: LUTZE PN 118067, HIGH FLEX, 4 COND 16G, SLD, PUR (ECX01193)

HI POWER "D" FEMALE
P/N DBMM9W4S (ECK00657)
+ CONTACTS (SOCKETS), #DM53744-6 (ECK00659)
BACKSHELL (ECK00656)

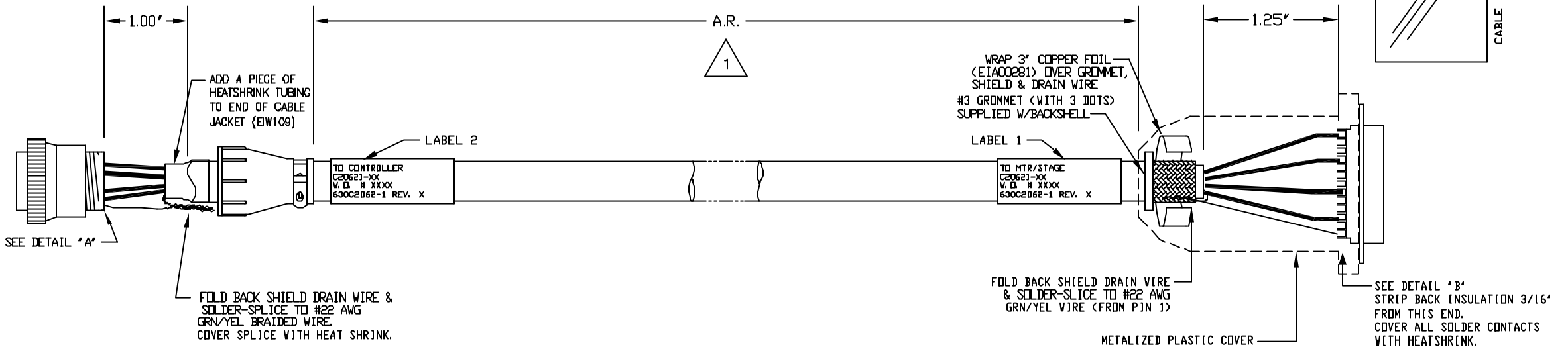
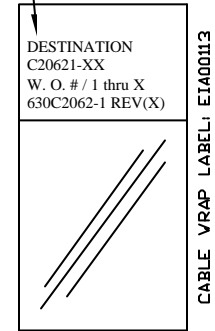
CABLE: LUTZE PN 118067, HIGH FLEX, 4 COND 16G, SLD, PUR (ECX01193)

PIN	WIRE	SIGNAL
14	-	-
13	-	-
12	-	-
11	-	-
10	-	-
9	-	-
8	#22 GRN/YEL	SHIELD
7	-	-
6	-	-
5	BLK #3	MTR Ø C
4	BLK #2	MTR Ø B
3	BLK #1	MTR Ø A
2	-	-
1	GRN/YEL	FRM GND

SIGNAL	WIRE	SOCKET
MTR Ø A	BLK #1	A1
MTR Ø B	BLK #2	A2
MTR Ø C	BLK #3	A3
FRAME GND	GRN/YEL	A4
SHIELD	#22 GRN/YEL	1

SEE LABELS 1 & 2 FOR DESTINATION

LABELS FOR C20621 CABLES:
(2) REQUIRED.
(1 AT EACH END)



3

USE #3 GROMMET WITH 3 DOTS AS SHOWN BELOW WHICH IS SUPPLIED W/BACKSHELL

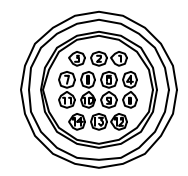


2

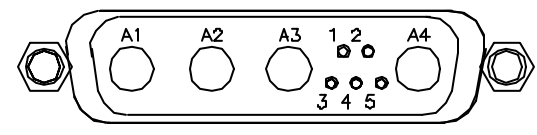
FOR CRIMP TOOL USE AMP HANDLE ASSY 90277-1 OR USE AMP CRIMPER MODEL #565435-5 WITH AMP HEAD ASSY 66098

1

1 decimeter is approx. 4 in.



DETAIL "A"
VIEWED FROM WIRE SIDE OF CONNECTOR
AMP PLUG #206044-1 (ECK131)



DETAIL "B"
VIEWED FROM WIRE SIDE OF CONNECTOR
HI POWER "D" FEMALE (ECK00657)

PROPRIETARY INFORMATION
THIS DRAWING IS THE PROPERTY
OF AEROTECH, INC. AND IS
SUBMITTED IN CONFIDENCE AND
SHALL NOT BE REPRODUCED NOR
COPIED NOR DISCLOSED TO OTHERS
UNDER PENALTY OF LAW.

TOLERANCES ON
FRACTIONS DECIMALS ANGLES
0 TO 6 ± 1/32 XX ± .01 ± 0-30'
OVER 6 ± 1/16 XXX ± .005

RMS FINISH ✓ EXCEPT AS NOTED

DRAWN	JAB	10/9/04
CHECKED	AGS	10/9/04
APPD.	AGS	10/9/04

PART CODE:		C20621-XX		C20621-1 TO -450 MAX LENGTH (DECIMETERS)	
		AEROTECH, INC. 101 Zeta Drive Pittsburgh, PA. 15238 (412)963-7470 www.aerotech.com			
		HIGH FLEX BRUSHLESS MOTOR CABLE (14 PIN TO HIGH PWR "D") 450 DECIMETERS (150') MAX LENGTH (CABLE: BL MTR-14P-4DU-HF-MAX450DM)			
PART CODE		SIZE		REV.	
SEE ABOVE		C		630C2062-1	
SCALE NTS		FILE NAME 630C2062-101.DWG		SHEET 1 OF 1	