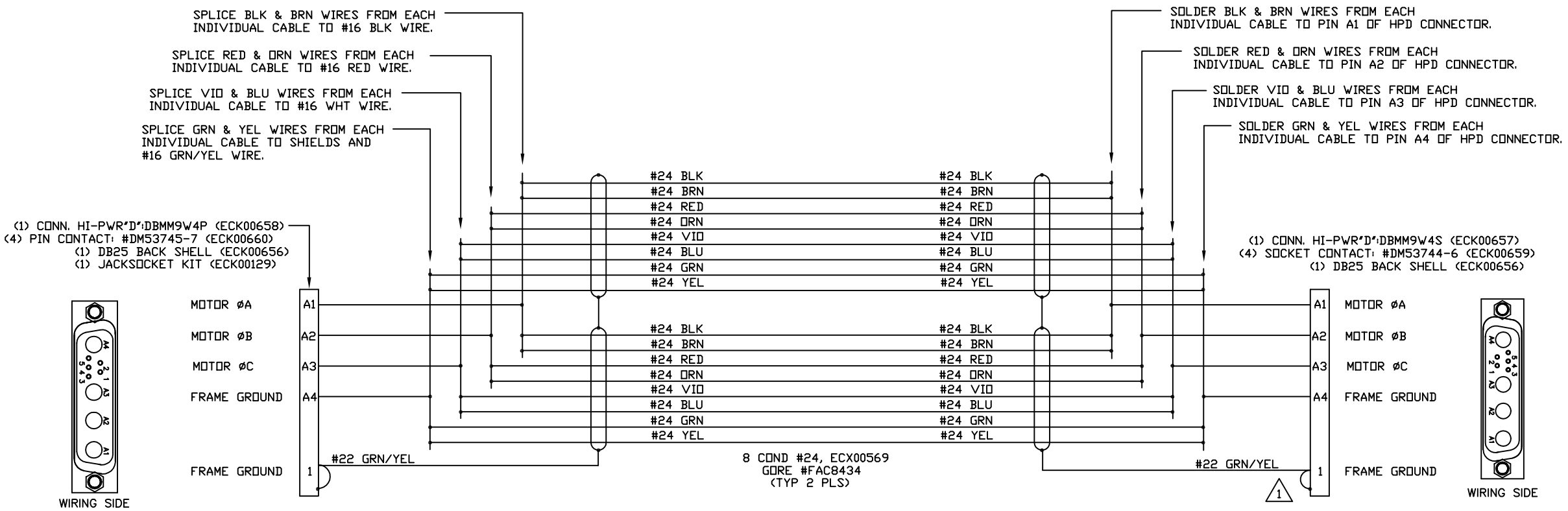
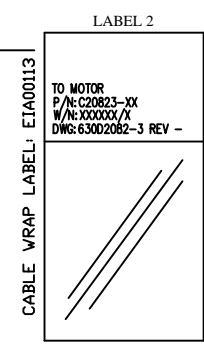
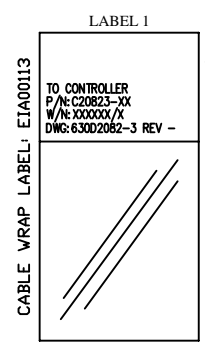
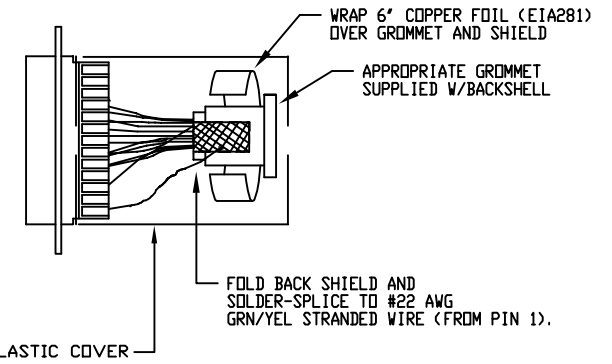
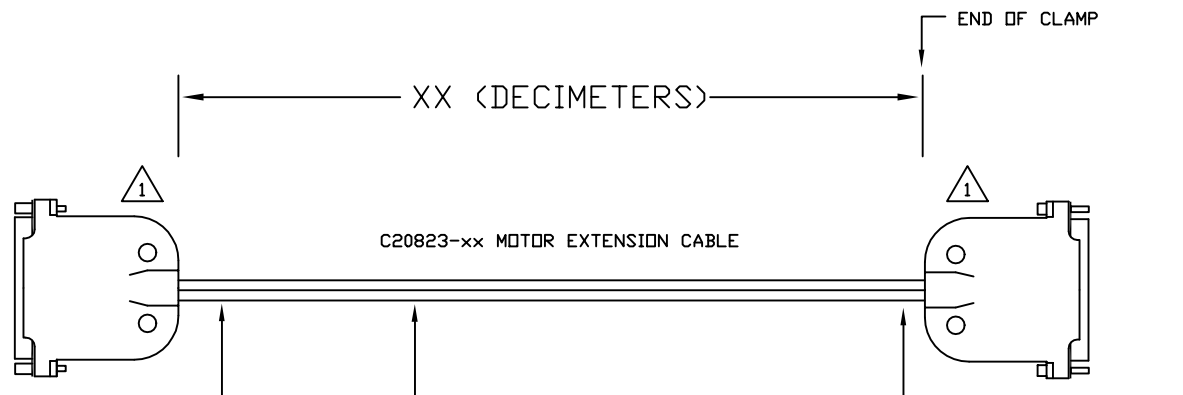



REVISIONS				
REV.	ZONE	DESCRIPTION	DATE	DRAWN



1 SHIELD TERMINATION WITH METALIZED PLASTIC COVERS WITH PIN 1 & SHIELD TIED TOGETHER.



PART CODE:		C20823-XX	XX = CABLE LENGTH IN DEICMETERS
PROPRIETARY INFORMATION THIS DRAWING IS THE PROPERTY OF AEROTECH, INC. AND IS SUBMITTED IN CONFIDENCE AND SHALL NOT BE REPRODUCED NOR COPIED NOR DISCLOSED TO OTHERS UNDER PENALTY OF LAW.		 AEROTECH, INC. 101 Zeta Drive Pittsburgh, PA. 15238 (412)963-7470 www.aerotech.com	
TOLERANCES ON FRACTIONS DECIMALS ANGLES 0 TO 6 ± 1/32 .XX ± .01 ± 0-30' OVER 6 ± 1/16 .XXX ± .005		BRUSHLESS MOTOR CABLE, HI FLEX, EXT 450 DECIMETERS (150') MAX LENGTH CABLE: BL MTR-4DU-4DU-EX-HF60-8ARMS	
RMS FINISH	EXCEPT AS NOTED	PART CODE	SIZE
DRAWN	AGS 10/07	-	C
CHECKED	JAB 10/07	630C2082-3	
APPD.	JAB 10/07	SCALE FULL	FILE NAME 630C2082-301.DWG SHEET 1 OF 1