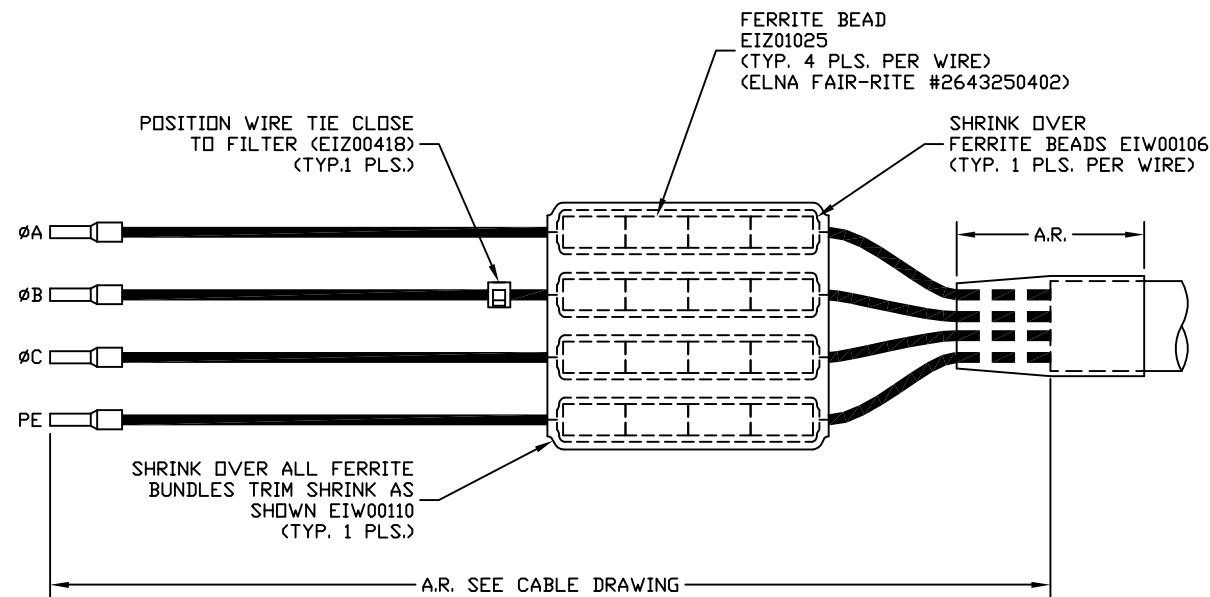
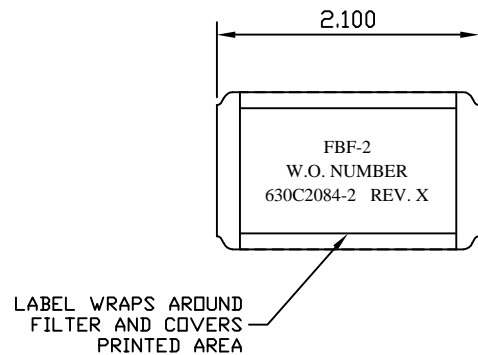


REVISIONS				
REV.	ZONE	DESCRIPTION	DATE	DRAWN
A		ADDED ECN10602	11/07	WG



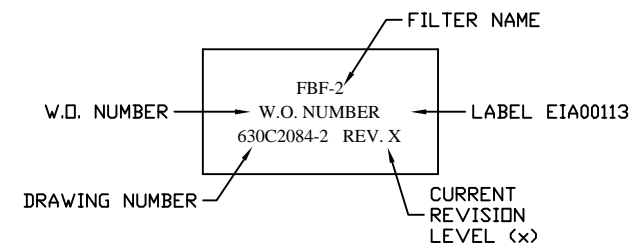
VIEW OF FERRITE BEAD ASSEMBLY FLATENED SHOWING DETAIL.  
CABLE AND WIRES SHOWN FOR REFERENCE ONLY


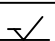


SIDE VIEW OF FERRITE BEAD  
ASSEMBLY COMPLETED



END VIEW OF FERRITE BEAD  
ASSEMBLY COMPLETED



PROPRIETARY INFORMATION THIS DRAWING IS THE PROPERTY OF AEROTECH, INC. AND IS SUBMITTED IN CONFIDENCE AND SHALL NOT BE REPRODUCED NOR COPIED NOR DISCLOSED TO OTHERS UNDER PENALTY OF LAW.			 AEROTECH, INC. 101 Zeta Drive Pittsburgh, PA. 15238 (412)963-7470 www.aerotech.com		
TOLERANCES ON FRACTIONS DECIMALS ANGLES 0 TO 6 ± 1/32 .XX ± .01 ± 0-30' OVER 6 ± 1/16 .XXX ± .005			<b>FERRITE BEAD FILTER FOR LOW POWER FLYING LEAD MOTOR CABLES</b>		
RMS FINISH  EXCEPT AS NOTED					
DRAWN	JRF	04/05	PART CODE	SIZE	REV.
CHECKED	DES	04/05	FBF-2	C	A
APPD.	JLD	04/05	SCALE FULL	FILE NAME 630C2084-2A1.dwg	SHEET 1 OF 1
			<b>630C2084-2</b>		