

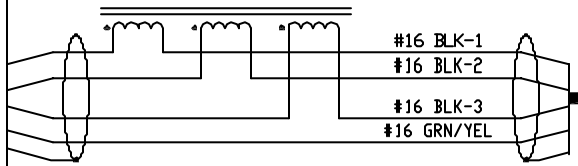
REVISIONS				
REV.	ZONE	DESCRIPTION	DATE	DRAWN

TYPICAL AMPLIFIER CONNECTIONS

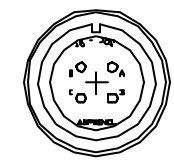
TB1-1	FLYING LEAD	WIRE	SIGNAL
	SEE NOTE #2	#16 BLK-1	MTR Ø A
TB1-2	FLYING LEAD	WIRE	SIGNAL
	SEE NOTE #2	#16 BLK-2	MTR Ø B
TB1-3	FLYING LEAD	WIRE	SIGNAL
	SEE NOTE #2	#16 BLK-3	MTR Ø C
HEATSINK GROUND SCREW	FLYING LEAD	WIRE	SIGNAL
	#8 RING TONGUE	#16 GRN/YEL	FRM GND MTR SHLD

STRAIGHT PLUG MS3106A-18 (MCM475)  
 INSERT MS18-10S (MCM495)  
 CLAMP 97-3057-1010 (MCM477)  
 BUSHING AN3055-18-10 (MCM481)

LUTZE #118087 (4 COND.#18), ECX01193

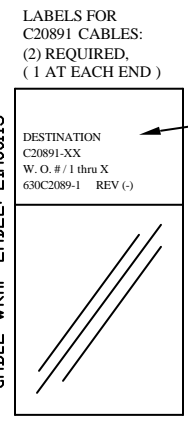
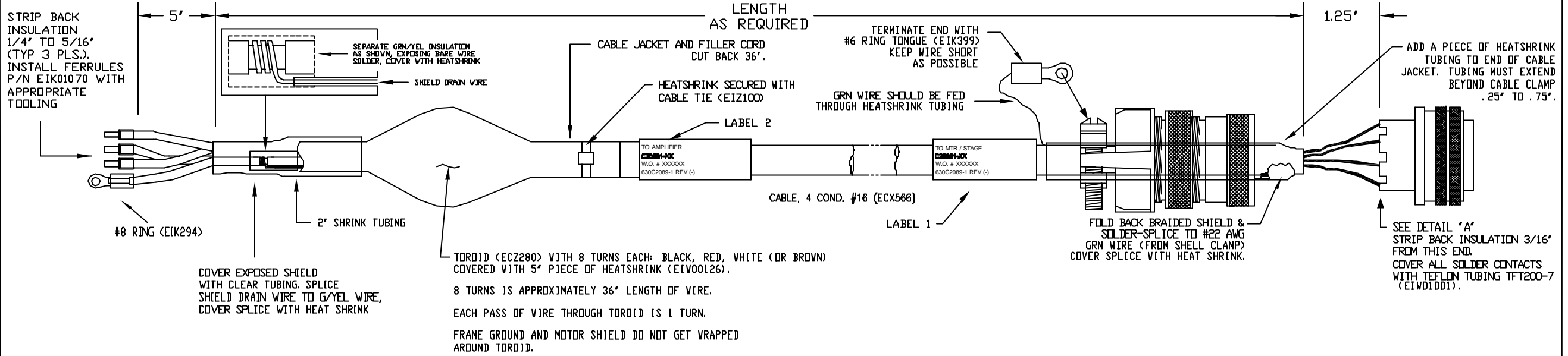


SIGNAL	WIRE	SOCKET
MTR Ø A	#18 BLK-1	A
MTR Ø B	#16 BLK-2	B
MTR Ø C	#16 BLK-3	C
FRAME GRND.	#16 GRN/YEL	D



DETAIL "A"

VIEWED FROM WIRE SIDE OF CONNECTOR  
 AMPHENOL SOCKET INSERT MS18-10S (MCM495)



SEE LABELS 1 & 2 FOR DESTINATION

2 ALL FLYING LEADS ARE TERMINATED WITH EIK01070 #16 FERRULE

1 XX (DECIMETER) X .328 = FT.  
 STARTING LENGTH = XX FT + 1.25 FT.  
 BDM VALUE = STARTING LENGTH + 1 FT.

PART CODE:

C20891-XX	C2089-10 TO 450	LENGTHS 1 TO 45 DM
-----------	-----------------	--------------------

PROPRIETARY INFORMATION  
 THIS DRAWING IS THE PROPERTY  
 OF AEROTECH, INC. AND IS  
 SUBMITTED IN CONFIDENCE AND  
 SHALL NOT BE REPRODUCED NOR  
 COPIED NOR DISCLOSED TO OTHERS  
 UNDER PENALTY OF LAW.

TOLERANCES ON  
 FRACTIONS DECIMALS ANGLES  
 0 TO 6 ± 1/32 XX ± .01 ± 0-30'  
 OVER 6 ± 1/16 XXX ± .005

RMS FINISH ✓ EXCEPT AS NOTED



AEROTECH, INC. 101 Zeta Drive  
 Pittsburgh, PA. 15238  
 412-963-7470 FAX: 412-963-7459  
 www.AEROTECH.com

BRUSHLESS MOTOR CABLE  
 CABLE:BL MTR-FLT-4MS-HF-MAX450DM

DRAWN	JAB	6/29/05	PART CODE	SIZE	REV.
CHECKED	AGS	6/29/05	SEE ABOVE	C	-
APPD.	AGS	6/29/05	SCALE NTS	FILE NAME 630C2089-101.DWG	SHEET 1 OF 1