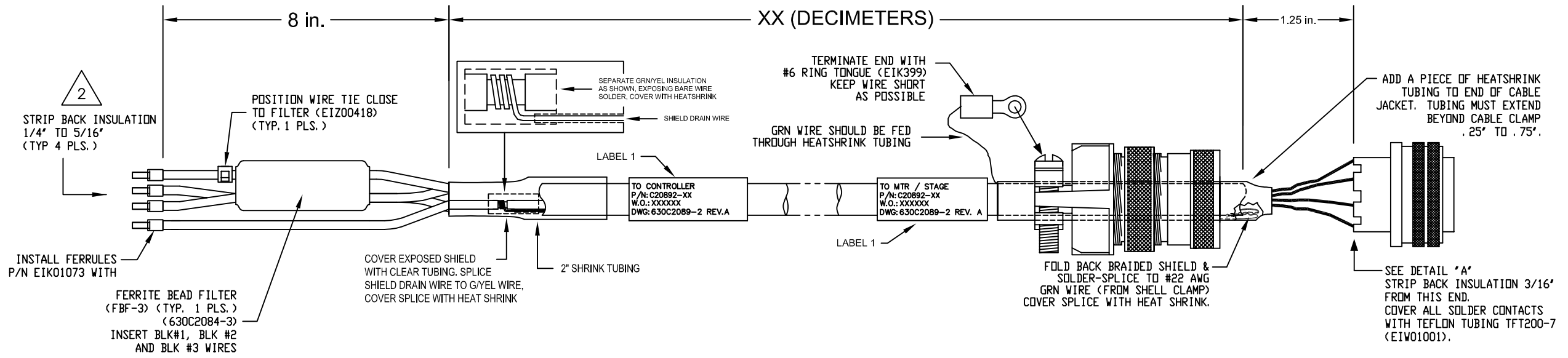
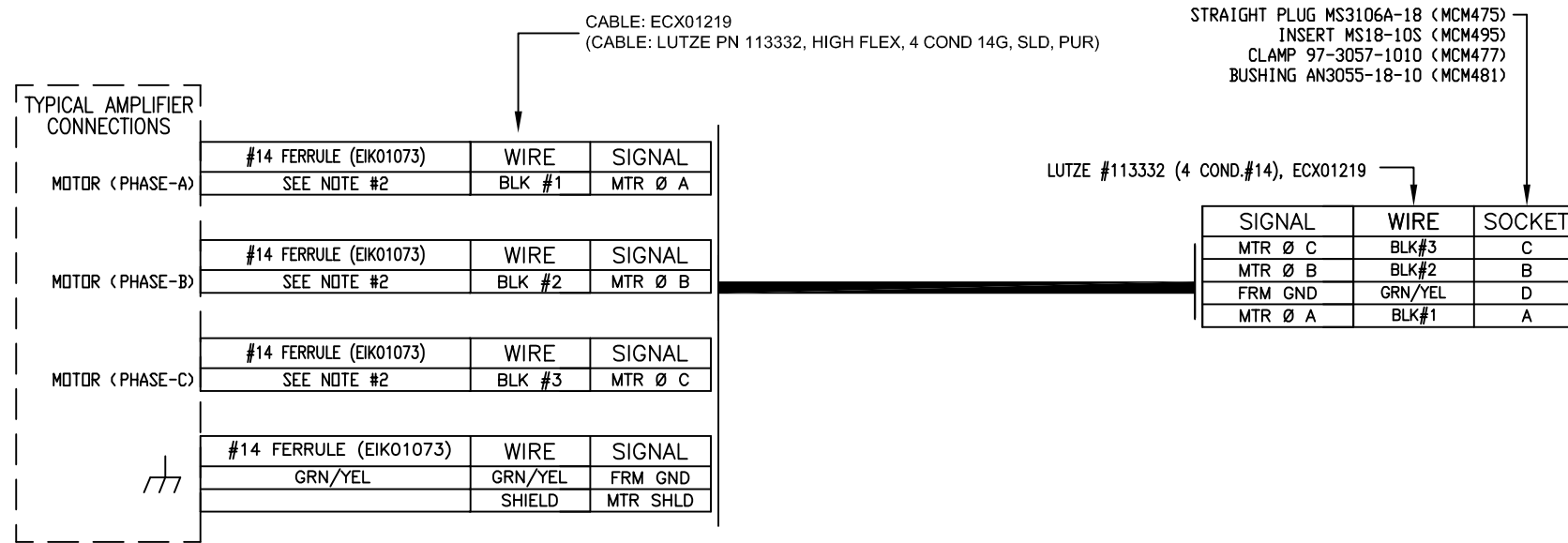
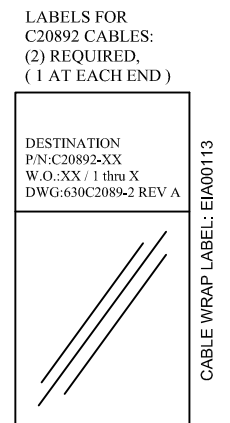
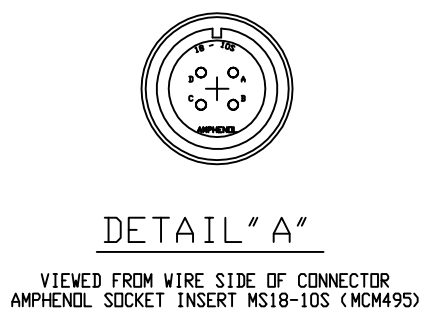


REVISIONS				
REV.	ZONE	DESCRIPTION	DATE	DRAWN
A	-	ADDED ECN14393	10/2012	LTL



- 3 CABLE OUTER DIAMETER IS 10.8 mm
MINIMUM BEND RADIUS FOR CONTINUOUS FLEX IS 115 mm
- 2 ALL FLYING LEADS ARE TERMINATED WITH EIK01073 #14 FERRULE
- 1 XX (DECIMETER) X .328 = FT.
STARTING LENGTH = XX FT + 1.25 FT.
BOM VALUE = STARTING LENGTH + 1 FT.



PROPRIETARY INFORMATION THIS DRAWING IS THE PROPERTY OF AEROTECH, INC. AND IS SUBMITTED IN CONFIDENCE AND SHALL NOT BE REPRODUCED NOR COPIED NOR DISCLOSED TO OTHERS UNDER PENALTY OF LAW.			PART CODE: C20892-XX C20892-3 TO -450 MAX LENGTH (DECIMETERS)	
TOLERANCES ON FRACTIONS DECIMALS ANGLES 0 TO 6 3/32 .XX ±01 ± 0-30' OVER 6 3/16 .XXX ±005			AEROTECH, INC. 101 Zeta Drive Pittsburgh, PA. 15238 (412)963-7470 www.aerotech.com	
RMS FINISH ✓ EXCEPT AS NOTED			HI-FLEX BRUSHLESS MOTOR CABLE 450 DECIMETERS (150') MAX LENGTH CABLE: BL MTR-FLB3-4MS-15ARMS-HF115-MAX450DM	
DRAWN MS 4/24/07 CHECKED AGS 4/24/07 APPD. AGS 4/24/07	PART CODE SIZE SEE ABOVE C		630C2089-2 REV. A	
SCALE NTS FILE NAME 630C2089-2A1.dwg SHEET 1 OF 1				