

REVISIONS				
REV.	ZONE	DESCRIPTION	DATE	DRAWN

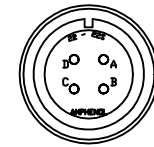
CABLE (4 COND. #14), ECX01219

FLYING LEAD	WIRE	SIGNAL
	BLK #1	MTR Ø A
FLYING LEAD	WIRE	SIGNAL
	BLK #2	MTR Ø B
FLYING LEAD	WIRE	SIGNAL
	BLK #3	MTR Ø C
FLYING LEAD	WIRE	SIGNAL
	GRN/YEL	FRAME GND
		SHIELD

STRAIGHT PLUG MS3106A-22 (MCM01208)
 INSERT MS22-22S (MCM01209)
 CLAMP 97-3057-1012 (MCM457)
 BUSHING AN3055-22-12 (MCM00493)

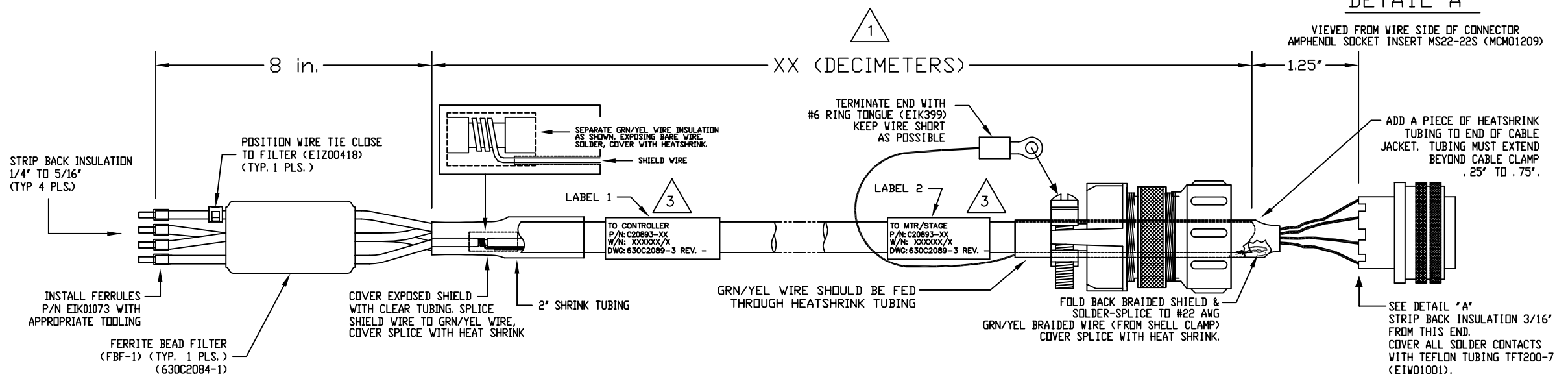
CABLE (4 COND. #14), ECX01219
 LUTZE #113332, HI FLEX, PUR

SIGNAL	WIRE	SOCKET
MTR Ø A	BLK #1	A
MTR Ø B	BLK #2	B
MTR Ø C	BLK #3	C
FRAME GND	GRN/YEL	D
SHIELD	SHIELD	BACKSHELL



DETAIL "A"

VIEWED FROM WIRE SIDE OF CONNECTOR
 AMPHENOL SOCKET INSERT MS22-22S (MCM01209)



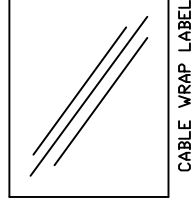
2 CABLE OUTER DIAMETER IS 10.8 mm
 MINIMUM BEND RADIUS FOR
 CONTINUOUS FLEX IS 115 mm

1 XX (DECIMETER) X .328 = FT.
 STARTING LENGTH = XX FT + 1.25 FT.
 BOM VALUE = STARTING LENGTH + 1 FT.

3 SEE LABELS 1 & 2 FOR DESTINATION

LABELS FOR C20893 CABLES:
 (2) REQUIRED,
 (1 AT EACH END)

DESTINATION
 P/N: C20893-XX
 W/N: XXX/1 thru X
 DWG: 630C2089-3
 REV -



PART CODE:		C20893-XX	C20893-1 TO -450 MAX LENGTH (DECIMETERS)
PROPRIETARY INFORMATION THIS DRAWING IS THE PROPERTY OF AEROTECH, INC. AND IS SUBMITTED IN CONFIDENCE AND SHALL NOT BE REPRODUCED NOR COPIED NOR DISCLOSED TO OTHERS UNDER PENALTY OF LAW.		AEROTECH, INC. 101 Zeta Drive Pittsburgh, PA. 15238 (412)963-7470 www.aerotech.com	
TOLERANCES ON FRACTIONS DECIMALS ANGLES 0 TO 6 ± 1/32 .XX ± .01 ± 0-30' OVER 6 ± 1/16 .XXX ± .005		HIGH POWER BRUSHLESS MOTOR CABLE 450 DECIMETERS (150') MAX LENGTH CABLE: BL MTR-FLB-4MS22-15ARMS-HF115	
RMS FINISH	EXCEPT AS NOTED	PART CODE	SIZE
DRAWN	AGS 10/07	C20893-XX	C
CHECKED	EJB 10/07	630C2089-3	
APPD.	EJB 10/07	SCALE NTS	FILE NAME 630C2089-301.dwg
SHEET 1 OF 1		REV. -	