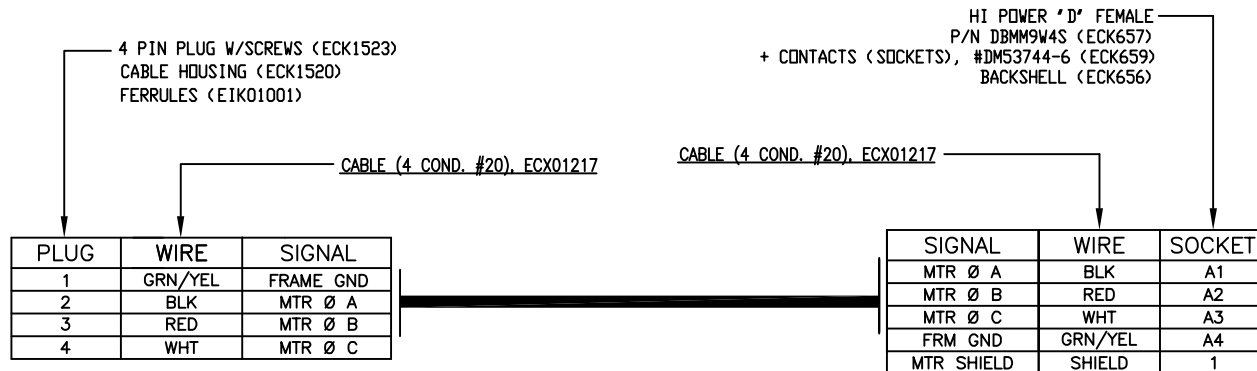


REVISIONS				
REV.	ZONE	DESCRIPTION	DATE	APPROVAL
A	-	ADDED ECN11285	08/08	JRF

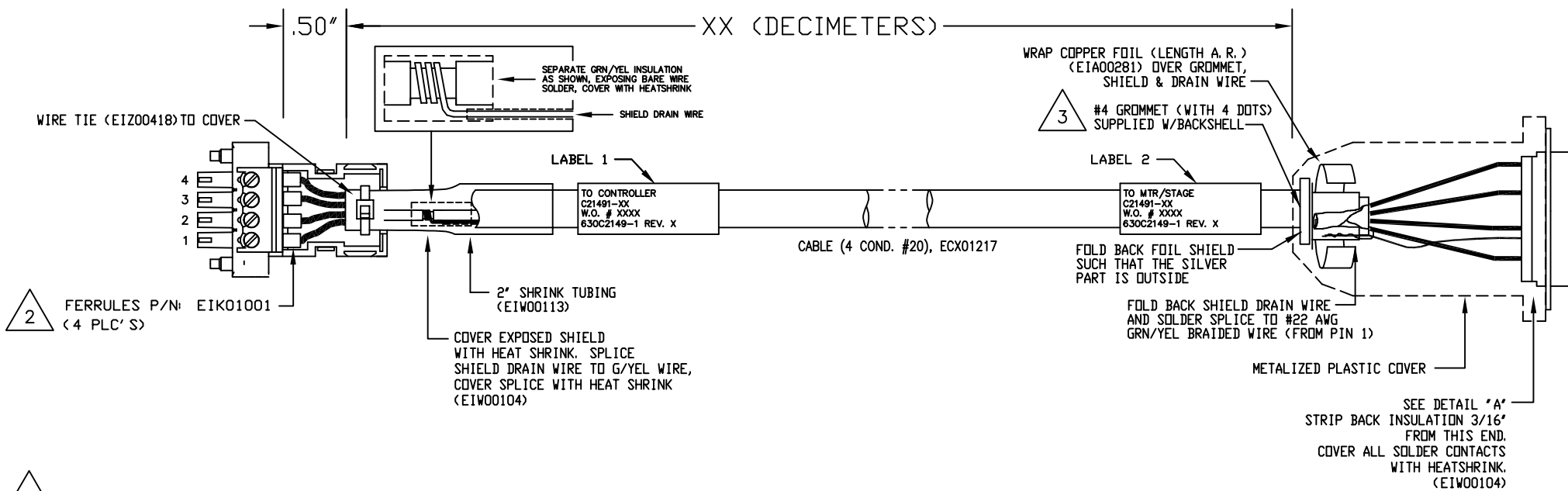


LABELS FOR C21491 CABLES:
(2) REQUIRED,
(1 AT EACH END)

SEE LABELS 1 & 2 FOR DESTINATION

CABLE WRAP LABEL: ETIA00113

DESTINATION
C21491-XX
W. O. # / 1 thru X
630C2149-1 REV(X)

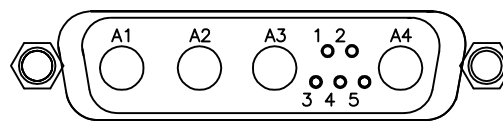


- 2 FERRULES P/N: EIK01001 (4 PLC'S)
- 3 USE #4 GROMMET WITH 4 DOTS AS SHOWN BELOW WHICH IS SUPPLIED W/BACKSHELL



- 2 STRIP INSULATION BACK 1/4" TO 5/16" ADD FERRULES P/N: EIK01001

- 1 XX (DECIMETER) X .328 = FT.
STARTING LENGTH = XX FT + 1.25 FT.
BOM VALUE = STARTING LENGTH + 1 FT.



SOLDER SIDE
DETAIL "A"
VIEWED FROM WIRE SIDE OF CONNECTOR
HI POWER 'D' FEMALE (ECK657)

PROPRIETARY INFORMATION
THIS DRAWING IS THE PROPERTY
OF AEROTECH, INC. AND IS
SUBMITTED IN CONFIDENCE AND
SHALL NOT BE REPRODUCED NOR
COPIED NOR DISCLOSED TO OTHERS
UNDER PENALTY OF LAW.

TOLERANCES ON
FRACTIONS DECIMALS ANGLES
0 TO 6 ± 1/32 .XX ± .01 ± 0-30'
OVER 6 ± 1/16 .XXX ± .005

RMS FINISH EXCEPT AS NOTED

DRAWN GLK 05/06

CHECKED EJB 05/06

APPD. EJB 05/06

PART CODE:
C21491-XX C21491-1 TO -450 MAX LENGTH (DECIMETERS)

AEROTECH®
AEROTECH, INC. 101 Zeta Drive
Pittsburgh, PA. 15238
(412)963-7470
www.aerotech.com

LOW POWER BRUSHLESS MOTOR CABLE
450 DECIMETERS (150') MAX LENGTH
CABLE: BL MTR-4TS-4DU-LP1-MAX450DM

PART CODE SIZE REV.
SEE ABOVE C **630C2149-1** A

SCALE NTS FILE NAME 630C2149-1A1.dwg SHEET 1 OF 1