

REVISIONS			
REV.	DESCRIPTION	DATE	DRAWN
A	ECN13568	9/6/11	EJB
B	ECN15004	8/12/13	AMD

PIN	WIRE	SIGNAL
13	-	-
12	#24 WHT	CW/+ LMT
11	#24 BLU	HALL C
10	#24 YEL	HALL A
9	-	-
8	-	-
7	#24 BRN	MKR
6	#24 BLK	MKR-N
5	#24 ORN	HALL B
4	#24 PNK	STAGE ID
3	#22 WHT/BRN	ENC +5V
2	#24 WHT/RED	THERM
1	OUTER SHIELD	SIG SHLD / FRM GND
14	#24 WHT/BLK	COS
15	#24 VIO	COS-N
16	#22 WHT/BLU	LMT +5V
17	#24 GRN	SIN
18	#24 RED	SIN-N
19	-	-
20	#22 WHT/GRN	LMT COM
21	#22 WHT/YEL	ENC COM
22	-	-
23	-	-
24	#24 GRY	CCW/- LMT
25	-	-

SIGNAL	WIRE	PIN
MTR Ø C	#20 WHT *	13
MTR Ø B	#20 RED *	12
MTR Ø A	#20 BLU *	11
FRAME & SHIELDS	#22 GRN	10
HALL C	#24 BLU	9
HALL A	#24 YEL	8
CCW/- LMT	#24 GRY	7
LMT COM	#22 WHT/GRN	6
ENC COM	#22 WHT/YEL	5
MKR-N	#24 BLK	4
SIN-N	#24 RED	3
COS-N	#24 VIO	2
NO CONNECTION	INSERT KEY	1
COS	#24 WHT/BLK	14
SIN	#24 GRN	15
MKR	#24 BRN	16
ENC +5V	#22 WHT/BRN	17
STAGE ID	#24 PNK	18
CW/+ LMT	#24 WHT	19
THERM	#24 WHT/RED	20
HALL B	#24 ORN	21
FRAME & SHIELDS	#22 GRN	22
MTR Ø A	#20 YEL *	23
MTR Ø B	#20 ORN *	24
MTR Ø C	#20 BRN *	25

UNUSED WIRES:  
#24 WHT/VIO

25 PIN PLUG

WIRE JUMPER PINS 10 & 22

#20 GRN, MOTOR FRAME  
#22 OUTER SHIELD  
#20 INNER SHIELD  
SPLICE (2) PIECES OF #22 GREEN TO INNER, OUTER SHIELDS, & MOTOR FRAME THEN TERMINATE TO IDC CONN.

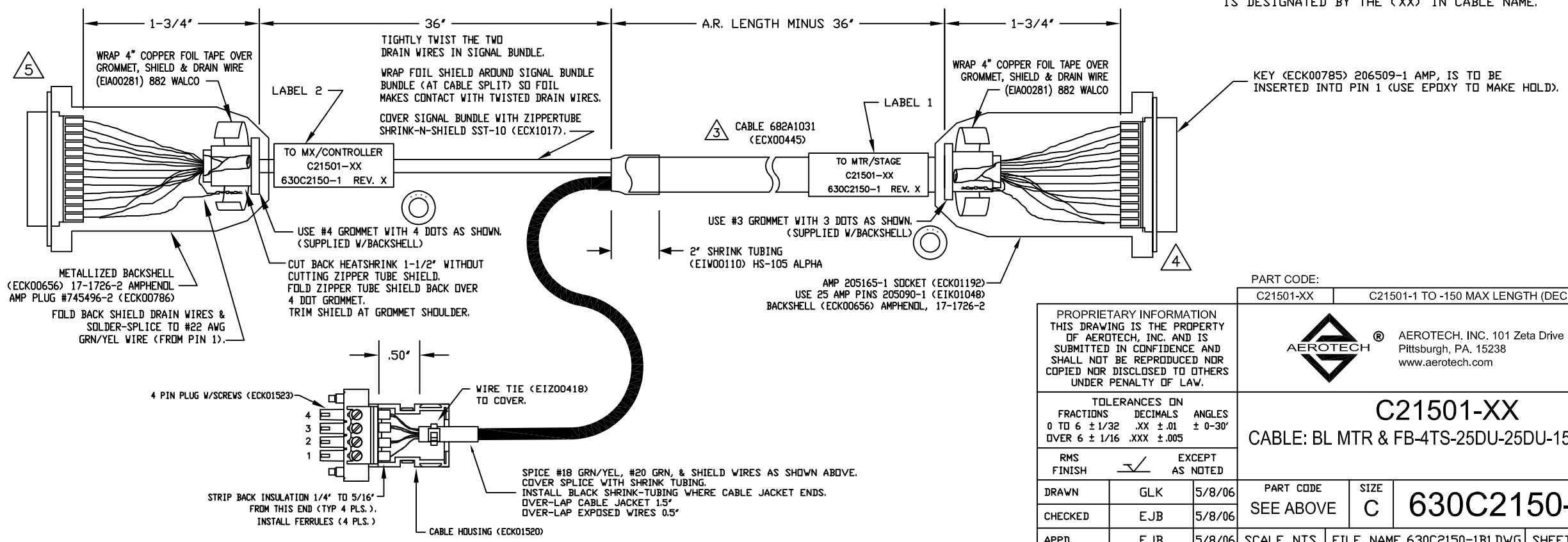
\* INDICATES WIRES FROM INNER BUNDLE

PIN	FERRULE	WIRE	SIGNAL
4	EIK01098	#20 WHT #20 BRN	MTR Ø C MTR Ø C
3	EIK01098	#20 RED #20 ORN	MTR Ø B MTR Ø B
2	EIK01098	#20 BLU #20 YEL	MTR Ø A MTR Ø A
1	EIK01072	#18 GRN/YEL #20 GRN INNER SHIELD	FRM GND MTR SHLD

CABLE DESCRIPTION  
(SEE LABEL 1 & 2)  
C21501-XX  
630C2150-1 REV. X  
PART #: EIA00113  
TEXT STYLE: PRESTIEG PICA 10pt  
DRAWING NUMBER: TYP. 2 PLS  
CURRENT REVISION LEVEL (x)

- 5 FOR CRIMP TOOL USE AMP HANDLE ASSY 58074-1 WITH AMP HEAD ASSY 58063-2
- 4 FOR CRIMP TOOL USE DMC HANDLE ASSY M22520/2-01 WITH DMC HEAD ASSY K1S
- 3 IF THIS IS TO BE MADE BY EXTERNAL VENDER SEND DRAWING 682A1031 WITH THIS DRAWING.
- 2 NOT APPLICABLE TO THIS DRAWING
- 1 STARTING CABLE LENGTH SHOULD BE 5 IN LONGER THAN TOTAL LENGTH OF CABLE. LENGTH OF CABLE IS DESIGNATED BY THE (XX) IN CABLE NAME.

#18 GRN/YEL #20 GRN SHIELD  
SPLICE WIRES. KEEP JUNCTION AS FLAT AS POSSIBLE. COVER JUNCTION WITH SHRINK TUBING.



PART CODE: C21501-XX C21501-1 TO -150 MAX LENGTH (DECIMETERS)

PROPRIETARY INFORMATION THIS DRAWING IS THE PROPERTY OF AEROTECH, INC. AND IS SUBMITTED IN CONFIDENCE AND SHALL NOT BE REPRODUCED NOR COPIED NOR DISCLOSED TO OTHERS UNDER PENALTY OF LAW.

TOLERANCES ON FRACTIONS DECIMALS ANGLES  
0 TO 6 ± 1/32 .XX ± .01 ± 0-30'  
OVER 6 ± 1/16 .XXX ± .005

RMS FINISH ✓ EXCEPT AS NOTED

DRAWN	GLK	5/8/06
CHECKED	EJB	5/8/06
APPD.	EJB	5/8/06

AEROTECH® AEROTECH, INC. 101 Zeta Drive  
Pittsburgh, PA. 15238  
www.aerotech.com

**C21501-XX**  
CABLE: BL MTR & FB-4TS-25DU-25DU-150DM MAX

PART CODE	SIZE	REV.
SEE ABOVE	C	B
630C2150-1		

SCALE NTS FILE NAME 630C2150-1B1.DWG SHEET 1 OF 1