

REVISIONS				
REV.	ZONE	DESCRIPTION	DATE	DRAWN

CONNECTOR 25 PIN D MALE AMP #745496-2 (ECK00786)
BACKSHELL #17-1726-2 (ECK00656)
682A1031 (ECX00445)
#24 AWG UNLESS OTHERWISE NOTED

PIN	WIRE	SIGNAL
13	ORN	BRK-
12	WHT	CW/+ LMT
11	-	-
10	-	-
9	-	-
8	-	-
7	BRN	MKR
6	BLK	MKR-N
5	-	-
4	-	-
3	#22 WHT/BRN	ENC +5V
2	-	-
1	SHIELD	SIG SHLD
14	WHT/RED	COS
15	VIO	COS-N
16	#22 WHT/BLU	LMT +5V
17	GRN	SIN
18	RED	SIN-N
19	-	-
20	#22 WHT/GRN	LMT COM
21	#22 WHT/YEL	ENC COM
22	PINK	HM LMT
23	-	-
24	GRY	CCW/- LMT
25	BLU	BRK+

UNUSED WIRES:
#24 YEL
WHT/BLK, WHT/VIO

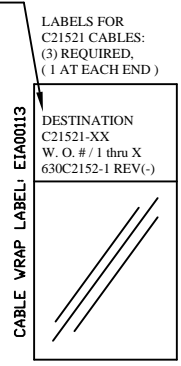
682A1031 (ECX00445)
#24 AWG UNLESS OTHERWISE NOTED

SIGNAL	WIRE	PIN
SIN-N	RED	H
BRK+	BLU	J
SIN	GRN	G
-	-	K
HM LMT	PINK	W
CCW/- LMT	GRY	V
CW/+LMT	WHT	U
COS-N	VIO	F
MKR	BRN	L
MKR-N	BLK	X
SIG SHLD	#22 GRN/YEL	Z
BRK-	ORN	T
COS	WHT/RED	E
ENC +5V	#22 WHT/BRN	M(1/2)
LMT +5V	#22 WHT/BLU	M(2/2)
MTR SHLD	#22 GRN/YEL	Y
MTR A	MTR ACT	#20 BRN R *
FRM GND	FRM GND	#20 GRN S *
LMT COM	#22 WHT/GRN	D(1/2)
ENC COM	#22 WHT/YEL	D(2/2)
MTR B	MTR B	#20 YEL N *
-	-	P *
MTR B-N	MTR BCT	#20 WHT A *
-	-	B *
MTR A-N	MTR A'	#20 RED C *

BIPOLAR | UNIPOLAR

BURNDY PLUG #UTG618-23SN (ECK00135)
CLAMP BURNDY #UTG18AC (ECK00617)
#28-22 SOCKETS BURNDY #SC24M-1TK6 (ECK00402)
CRIMP TOOL: BURNDY HANDLE W/HEAD ASSY N20RT-29
OR BURNDY CRIMPER MODEL UTM-2R W/HEAD ASSY CM11G1R
* #20-16 SOCKETS BURNDY #SC16M-1TK6 (ECK00403)
CRIMP TOOL: BURNDY HANDLE W/HEAD ASSY N16RT-24

SEE LABELS 1, 2 & 3 FOR DESTINATION



USE 2" LENGTHS OF THICK WALL HEATSHRINK TUBING TO BUILD UP CABLE DIAMETER FOR PROPER STRAIN RELIEFING. STRAIN RELIEFING MUST WITHSTAND 35 LB. PULL.

CUT THICK WALL HEATSHRINK TUBING WITH CABLE CUTTER SUCH THAT ENDS ARE PERPENDICULAR TO CABLE AND CUT IS SMOOTH. THICK WALL HEATSHRINK TUBING:
AMP # 53701-1 (EIW00112) MAX INSIDE DIA = .750" (EXPANDED), MIN INSIDE DIA = .220" (RECOVERED)
AMP # 53700-1 (EIW00113) MAX INSIDE DIA = .400" (EXPANDED), MIN INSIDE DIA = .150" (RECOVERED)

STARTING CABLE LENGTH = A. R. LENGTH + 5 IN.

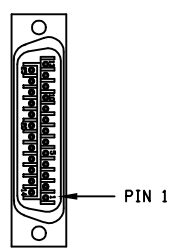
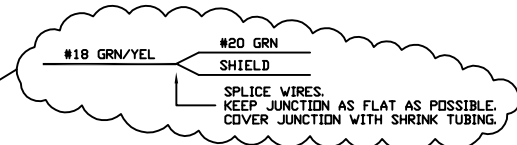
4 PIN PLUG W/SCREWS (ECK1523)
CABLE HOUSING (ECK1520)
682A1031 (ECX00445)

PIN	FERRULE	WIRE	SIGNAL
4	EK01098	#20 WHT #20 RED	MTR Ø C
3	EK01001	#20 YEL	MTR Ø B
2	EK01001	#20 BRN	MTR Ø A
1	EK01072	#18GRN/YEL #20 GRN INNER SHIELD	FRM GND MTR SHLD

UNUSED WIRES:
BLU, DRN

INNER BUNDLE OF 682A1031

FOR CRIMP TOOL USE AMP HANDLE ASSY 58074-1 WITH AMP HEAD ASSY 58063-2



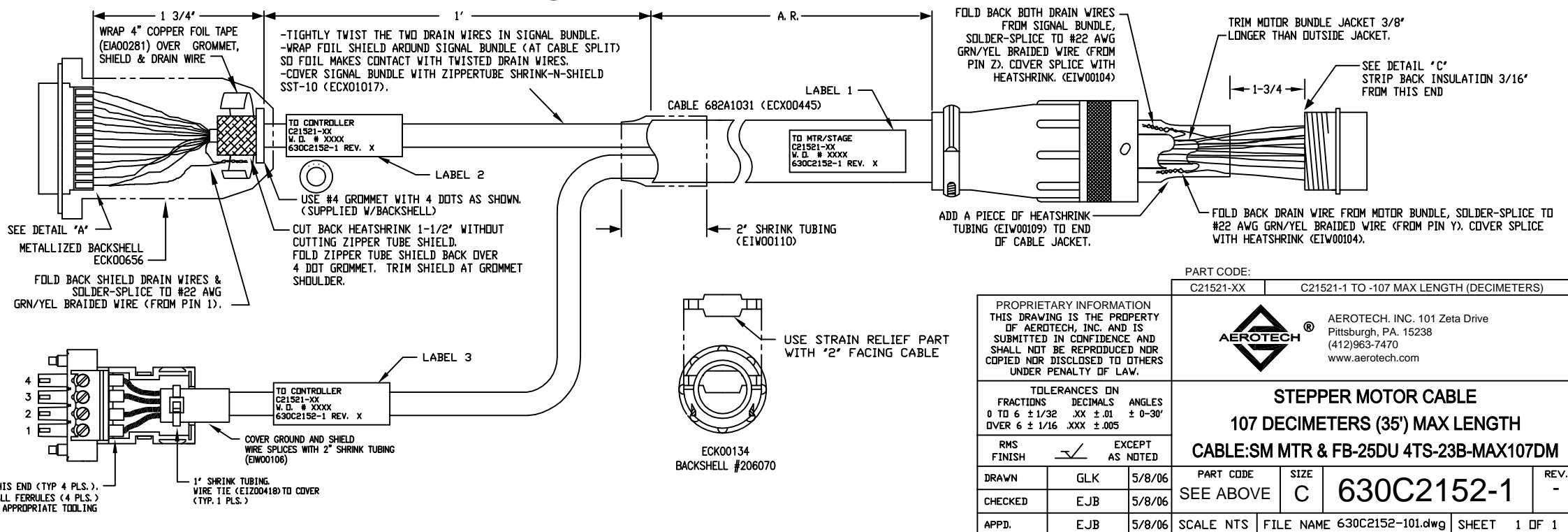
DETAIL "A"

AMP PLUG 745496-2 (ECK00786)
VIEWED FROM WIRE SIDE OF CONNECTOR



DETAIL "B"

BURNDY PLUG UTG618-23SN (ECK00135)
VIEWED FROM WIRE SIDE OF CONNECTOR



PART CODE:	C21521-XX	C21521-1 TO -107 MAX LENGTH (DECIMETERS)
------------	-----------	--

PROPRIETARY INFORMATION THIS DRAWING IS THE PROPERTY OF AEROTECH, INC. AND IS SUBMITTED IN CONFIDENCE AND SHALL NOT BE REPRODUCED NOR COPIED NOR DISCLOSED TO OTHERS UNDER PENALTY OF LAW.		
TOLERANCES ON FRACTIONS DECIMALS ANGLES 0 TO 6 ± 1/32 .XX ± .01 ± 0-30' OVER 6 ± 1/16 .XXX ± .005		
RMS FINISH	EXCEPT AS NOTED	
DRAWN	GLK	5/8/06
CHECKED	EJB	5/8/06
APPD.	EJB	5/8/06

AEROTECH		AEROTECH, INC. 101 Zeta Drive Pittsburgh, PA. 15238 (412)963-7470 www.aerotech.com	
STEPPER MOTOR CABLE			
107 DECIMETERS (35') MAX LENGTH			
CABLE: SM MTR & FB-25DU 4TS-23B-MAX107DM			
PART CODE	SIZE	REV.	
SEE ABOVE	C	-	
630C2152-1			
SCALE NTS	FILE NAME	SHEET 1 OF 1	