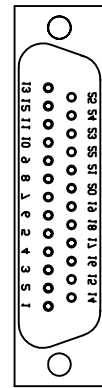
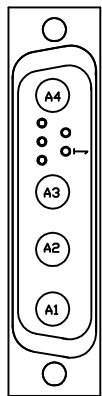


| REVISIONS |      |             |      |          |
|-----------|------|-------------|------|----------|
| REV.      | ZONE | DESCRIPTION | DATE | APPROVAL |
|           |      |             |      |          |

AXIS FEEDBACK CONNECTOR (DETAIL-B)  
 (1) DB25P CONNECTOR (ECK00101)  
 (1) DB25 BACK SHELL (ECK00656)  
 INSTALL SCREWLOCKS



DETAIL-A  
 DB25P (ECK00101)  
 VIEW: WIRING SIDE



DETAIL-C  
 DBMM9W4P  
 VIEW: WIRING SIDE

5V 3  
 5V 16  
 0V 20  
 0V 21  
 CW/+ LMT 12  
 THERM 2  
 CCW/- LMT 24

HALL A 10  
 HALL B 5  
 HALL C 11  
 COS 14  
 COS-N 15  
 SIN 17  
 SIN-N 18  
 MKR 7  
 MKR-N 6

SHIELD 1

MOTOR PHASE A A1  
 MOTOR PHASE B A2  
 MOTOR PHASE C A3  
 FRAME GROUND A4  
 SHIELD 1

#24 RED 3  
 #24 VID 16  
 #24 BLK 20  
 #24 GRN 21  
 #26 WHT/BRN 12  
 #26 WHT/GRN 2  
 #26 WHT/GRY 24  
 #26 BRN 10  
 #26 GRN 5  
 #26 WHT 11  
 #26 YEL 14  
 #26 WHT/YEL 15  
 #26 BLU 17  
 #26 WHT/BLU 18  
 #26 DRN 7  
 #26 WHT/DRN 6  
 #22 GRN/YEL 1

#24 BLK A1  
 #24 BRN A1  
 #24 RED A2  
 #24 DRN A2  
 #24 VID A3  
 #24 BLU A3  
 #24 GRN A4  
 #24 YEL A4  
 #22 GRN/YEL 1

GORE WIRE ENC.CABLE  
 12C- 26AWG/4C-24AWG  
 GSC-01-22575-00  
 (ECX01126)

CABLE FAC8434 GORE 8COND 24AWG SHIELDED  
 (ECX00569)

#24 RED 17  
 #24 VID 5  
 #24 BLK 20  
 #24 GRN 6  
 #26 WHT/BRN 19  
 #26 WHT/GRN 2  
 #26 WHT/GRY 7  
 #26 BRN 8  
 #26 GRN 21  
 #26 WHT 9  
 #26 YEL 14  
 #26 WHT/YEL 15  
 #26 BLU 17  
 #26 WHT/BLU 15  
 #26 DRN 3  
 #26 WHT/DRN 4  
 #22 GRN/YEL 10

#24 BLK 23  
 #24 BRN 11  
 #24 RED 11  
 #24 DRN 24  
 #24 VID 12  
 #24 BLU 25  
 #24 GRN 13  
 #24 YEL 22

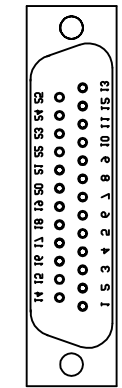
AXIS MOTOR/FEEDBACK CONNECTOR (DETAIL-A)  
 (1) DB25S CONNECTOR (ECK00300)  
 (1) DB25 BACK SHELL (ECK00656)  
 INSTALL SCREWLOCKS  
 KEY PIN 1

KEY

5V 17  
 0V 5  
 0V 6  
 0V 19  
 CW/+ LMT 21  
 THERM 2  
 CCW/- LMT 7  
 HALL A 8  
 HALL B 21  
 HALL C 9  
 COS 14  
 COS-N 2  
 SIN 15  
 SIN-N 3  
 MKR 16  
 MKR-N 4

SHIELD 10

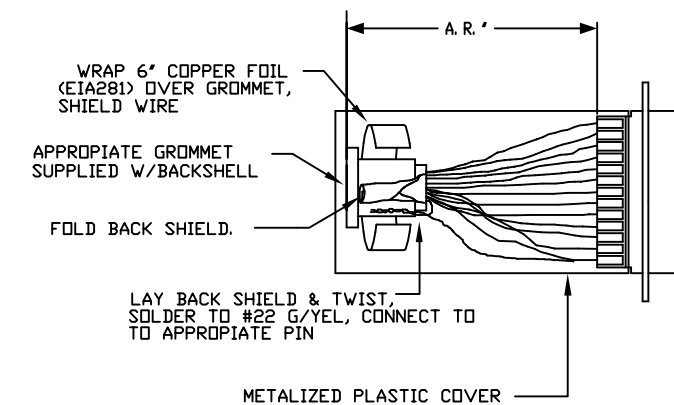
MOTOR PHASE A 23  
 MOTOR PHASE A 11  
 MOTOR PHASE B 24  
 MOTOR PHASE B 12  
 MOTOR PHASE C 25  
 MOTOR PHASE C 13  
 FRAME GROUND 22



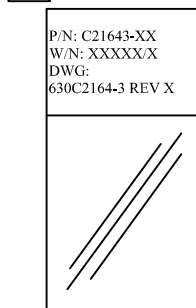
DETAIL-B  
 DB25S (ECK00300)  
 VIEW: WIRING SIDE


TO SINGLE CONNECTOR  
 MTR/FDBK CABLE  
 OF STAGE

1 SHIELD TERMINATION WITH METALIZED PLASTIC COVERS



2 LABEL EIA00113



|   |     |   |                        |
|---|-----|---|------------------------|
| PROPRIETARY INFORMATION<br>THIS DRAWING IS THE PROPERTY OF AEROTECH, INC. AND IS SUBMITTED IN CONFIDENCE AND SHALL NOT BE REPRODUCED NOR COPIED NOR DISCLOSED TO OTHERS UNDER PENALTY OF LAW. |     | PART CODE:<br>C21643-XX C21643-1 TO -10 MAX LENGTH (DECIMETERS)   |                        |
| TOLERANCES ON<br>FRACTIONS DECIMALS ANGLES<br>0 TO 6 ± 1/32 .XX ± .01 ± 0-30'<br>OVER 6 ± 1/16 .XXX ± .005  |     |  AEROTECH, INC. 101 Zeta Drive<br>Pittsburgh, PA. 15238<br>(412)963-7470 TWX710-795-3125 |                        |
| RMS FINISH <input checked="" type="checkbox"/> EXCEPT AS NOTED  |     | BRUSHLESS MTR/FDBK<br>2 CONN TO 1 CONN ADAPTER<br>CABLE: BL MTR & FB-25DU-25DU-4DU-ADP-GENDER CHANGER-MAX100M   |                        |
| DRAWN   | TES | 7/31/15   | PART CODE<br>SEE ABOVE |
| CHECKED   | AGS | 7/31/15   | SIZE<br>C              |
| APPD.   | TES | 7/31/15   | REV.<br>-              |
| SCALE NTS   |     | FILE NAME 630C2164-301.DWG  | SHEET 1 OF 1           |