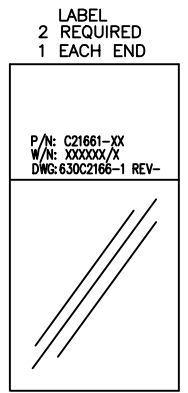
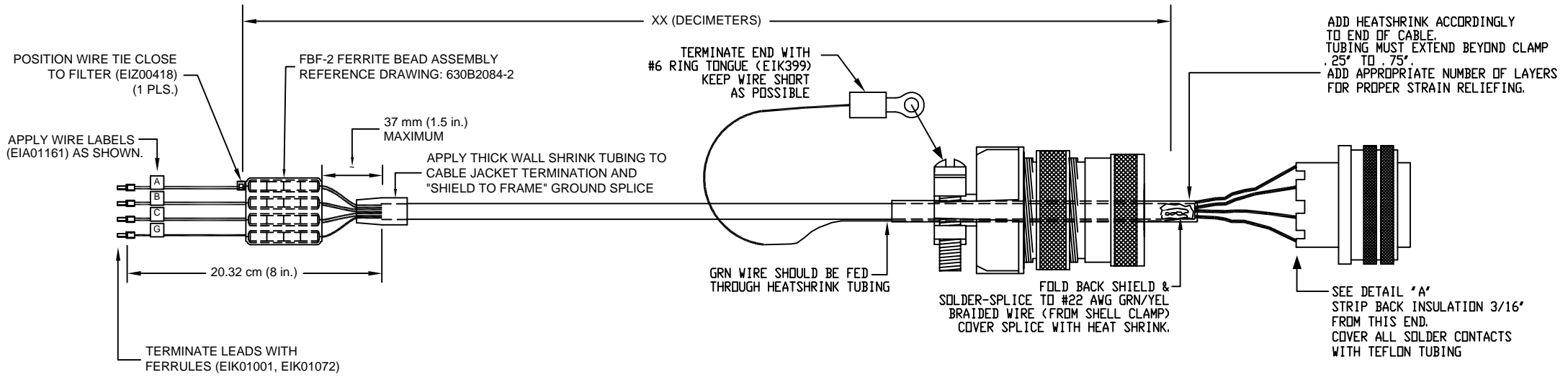
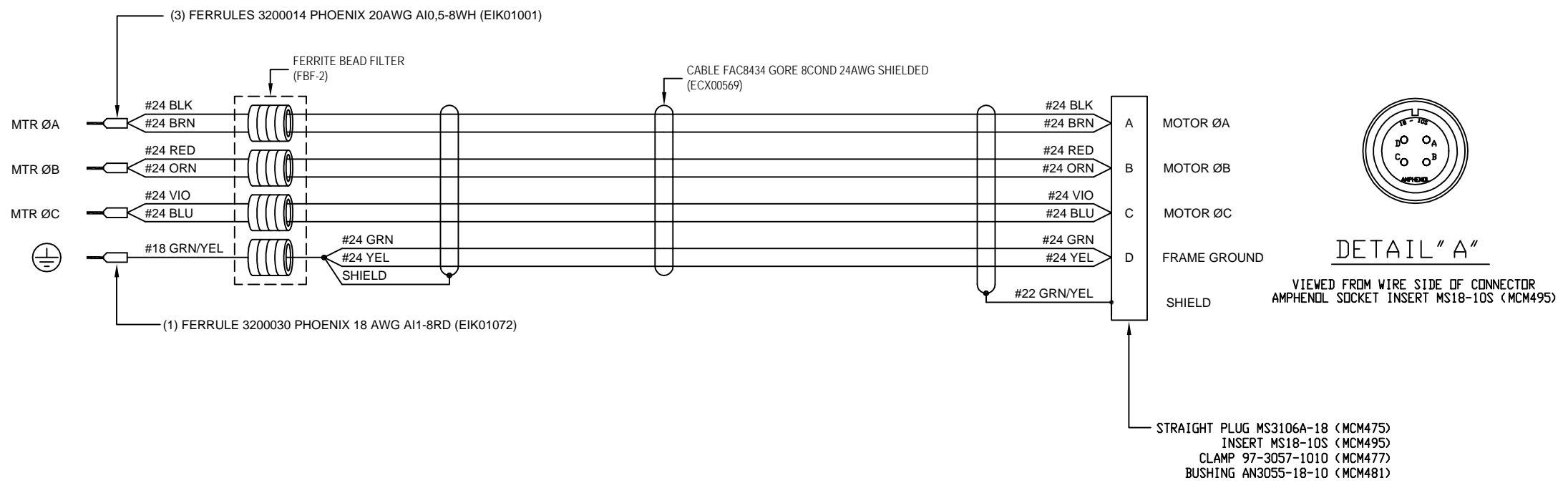


REVISIONS				
REV.	ZONE	DESCRIPTION	DATE	DRAWN



QTY X, C21661-XX
WO# XXXXXX

CUSTOMER: XXXXXXXXXXXX
ORDER: XXXXXX
APPROVED: XXX RELEASED: XXXXXXXX

CUST FILENAME: XXXXXX 630D2166-101 MOTOR CABLE.DWG

PART CODE:		C21661-XX	XX = CABLE LENGTH IN DEICMETERS
PROPRIETARY INFORMATION THIS DRAWING IS THE PROPERTY OF AEROTECH, INC. AND IS SUBMITTED IN CONFIDENCE AND SHALL NOT BE REPRODUCED NOR COPIED NOR DISCLOSED TO OTHERS UNDER PENALTY OF LAW.		<p>AEROTECH, INC. 101 Zeta Drive Pittsburgh, PA. 15238 (412)963-7470 www.aerotech.com</p>	
TOLERANCES ON		BRUSHLESS MOTOR CABLE	
FRACTIONS	DECIMALS	ANGLES	450 DECIMETERS (150') MAX LENGTH
0 TO 6 3/32	.XX ±01	± 0-30'	CABLE: BL MTR-FLB-4MS-HF60-4ARMS-MAX450DM
OVER 6 1/16	.XXX ±005		
RMS FINISH	EXCEPT AS NOTED		
DRAWN	AGS	10/07/06	PART CODE: C21661-XX
CHECKED	JAB	10/07/06	SIZE: C
APPD.	JAB	10/07/06	630C2166-1
SCALE	NTS	FILE NAME	630C2166-101.DWG
SHEET	1 of 1		