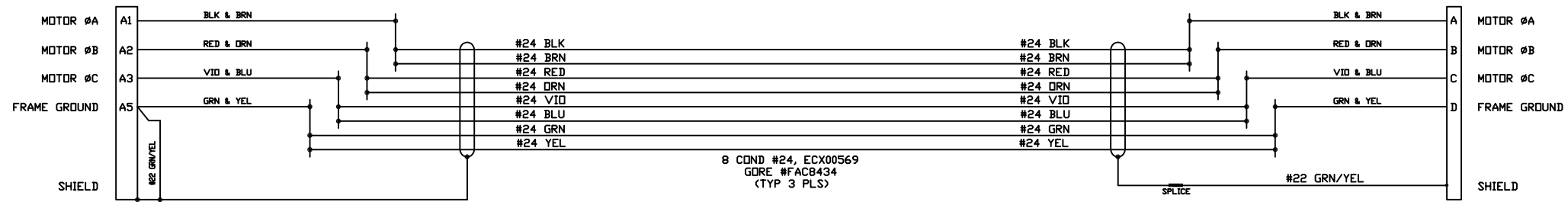
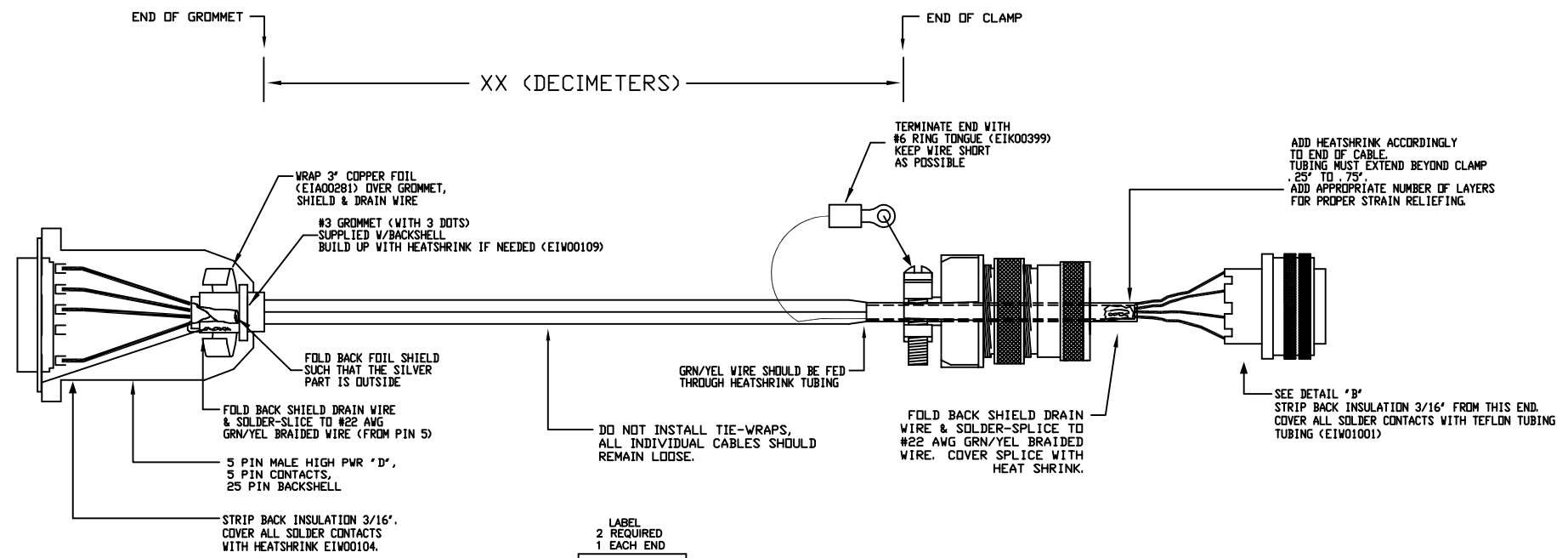


| REVISIONS |      |             |      |       |
|-----------|------|-------------|------|-------|
| REV.      | ZONE | DESCRIPTION | DATE | DRAWN |
|           |      |             |      |       |

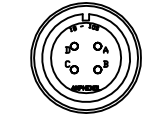
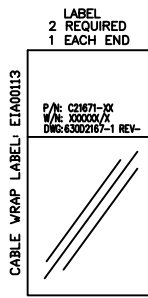
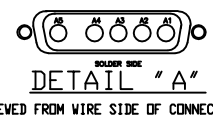


CONNECTOR HI-PWR-'D' 5 PIN MALE (ECK01236)  
 (5) PIN CONTACT (20AMP) (ECK00660)  
 BACKSHELL 25 PIN D METALIZED SHELL (ECK00656)  
 (POPULATE ALL CONTACT POSITIONS)

STRAIGHT PLUG MS3106A-18 (MCM475)  
 INSERT MS18-10S (MCM495)  
 CLAMP 97-3057-1010 (MCM477)  
 BUSHING AN3055-18-10 (MCM481)



HI POWER 'D' 5-PIN MALE (ECK01236) DETAILS



|  |          |  |           |
|--|----------|--|-----------|
| PART CODE: C21671-XX   |          | XX = CABLE LENGTH IN DECIMETERS  |           |
| PROPRIETARY INFORMATION<br>THIS DRAWING IS THE PROPERTY<br>OF AEROTECH, INC. AND IS<br>SUBMITTED IN CONFIDENCE AND<br>SHALL NOT BE REPRODUCED NOR<br>COPIED NOR DISCLOSED TO OTHERS<br>UNDER PENALTY OF LAW. |          |  |           |
|  |          | AEROTECH, INC. 101 Zeta Drive<br>Pittsburgh, PA 15238<br>(412)963-7470<br>www.aerotech.com |           |
| BRUSHLESS MOTOR CABLE<br>450 DECIMETERS (150') MAX LENGTH<br>CABLE: BL MTR-5DU-4MS-HF60-4ARMS-MAX450DM   |          |  |           |
| TOLERANCES ON<br>FRACTIONS DECIMALS ANGLES<br>0 TO 6 ± 1/32 .XX ± .01 ± 0-30°<br>OVER 6 ± 1/16 .XXX ± .005   |          | RMS FINISH EXCEPT AS NOTED   |           |
| DRAWN  | 3/1/2010 | RWR  | PART CODE |
| CHECKED  | 3/1/2010 | EJB  | C21671-XX |
| APPD.  | 3/1/2010 | EJB  | SCALE N/A |
| SIZE   |          | FILE NAME  |           |
| D  |          | 630D2167-1   |           |
| REV.   |          | SHEET  |           |
| -  |          | 1 OF 1   |           |