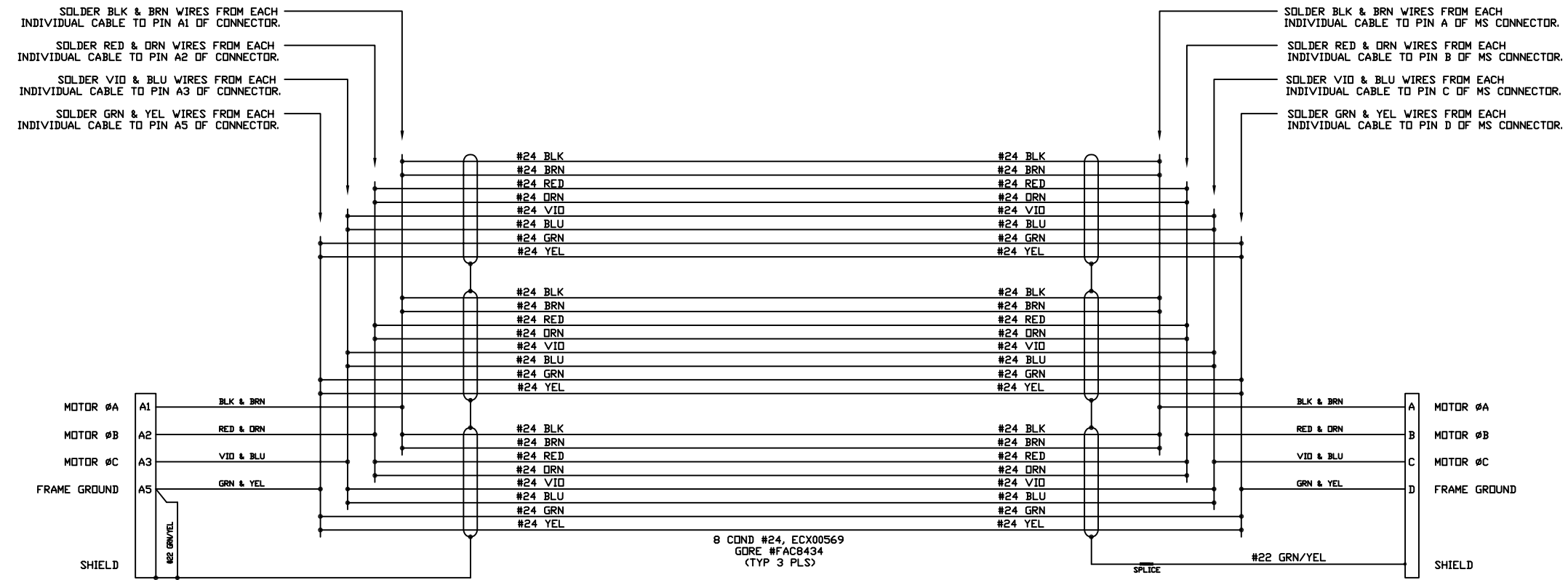
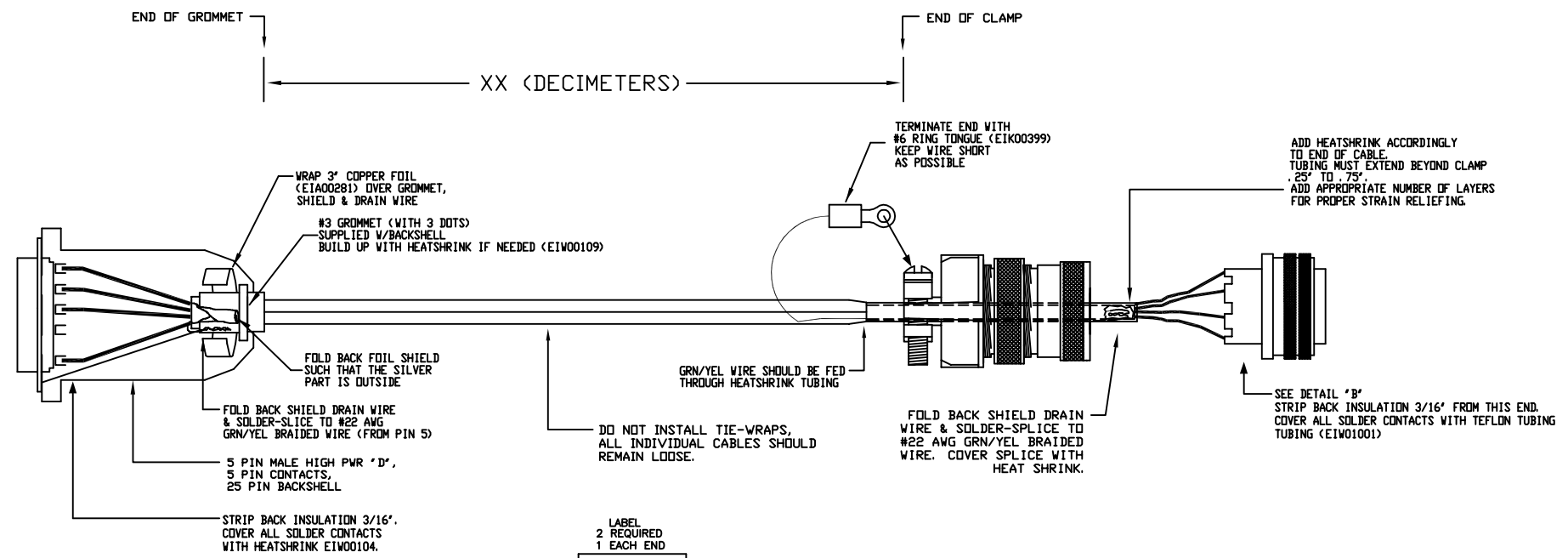


REVISIONS				
REV.	ZONE	DESCRIPTION	DATE	DRAWN

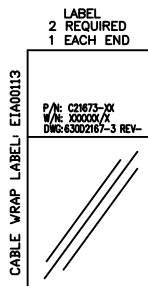
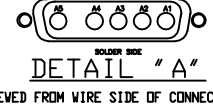


CONNECTOR HI-PWR-'D' 5 PIN MALE (ECK01236)  
 (5) PIN CONTACT (20AMP) (ECK00660)  
 BACKSHELL 25 PIN D METALIZED SHELL (ECK00656)  
 (POPULATE ALL CONTACT POSITIONS)

STRAIGHT PLUG MS3106A-18 (MCM475)  
 INSERT MS18-10S (MCM495)  
 CLAMP 97-3057-1010 (MCM477)  
 BUSHING AN3055-18-10 (MCM481)



HI POWER 'D' 5-PIN MALE (ECK01236) DETAILS



DETAIL "B"  
 VIEWED FROM WIRE SIDE OF CONNECTOR  
 AMPHENOL SOCKET INSERT MS18-10S (MCM495)

PART CODE: C21673-XX		XX = CABLE LENGTH IN DECIMETERS	
PROPRIETARY INFORMATION THIS DRAWING IS THE PROPERTY OF AEROTECH, INC. AND IS SUBMITTED IN CONFIDENCE AND SHALL NOT BE REPRODUCED NOR COPIED NOR DISCLOSED TO OTHERS UNDER PENALTY OF LAW.			
		AEROTECH, INC. 101 Zeta Drive Pittsburgh, PA 15238 (412)963-7470 www.aerotech.com	
BRUSHLESS MOTOR CABLE 450 DECIMETERS (150') MAX LENGTH CABLE: BL MTR-5DU-4MS-HF60-12ARMS-MAX450DM			
TOLERANCES ON FRACTIONS DECIMALS ANGLES 0 TO 6 ± 1/32 .XX ± .01 ± 0-30° OVER 6 ± 1/16 .XXX ± .005		RMS FINISH EXCEPT AS NOTED	
DRAWN	3/1/2010	RWR	PART CODE
CHECKED	3/1/2010	EJB	C21673-XX
APPD.	3/1/2010	EJB	SCALE N/A
SIZE		REV.	
D		-	
FILE NAME 630D2167-301.DWG		SHEET 1 OF 1	