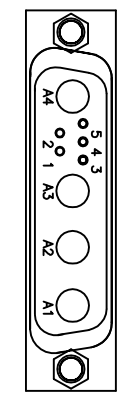
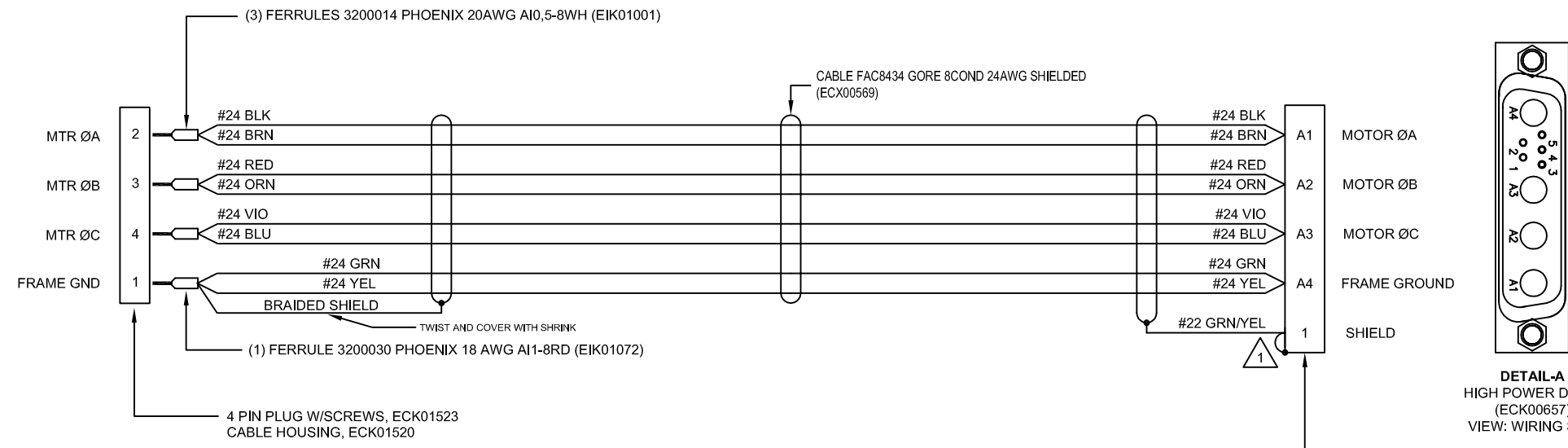
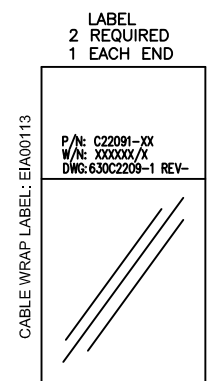
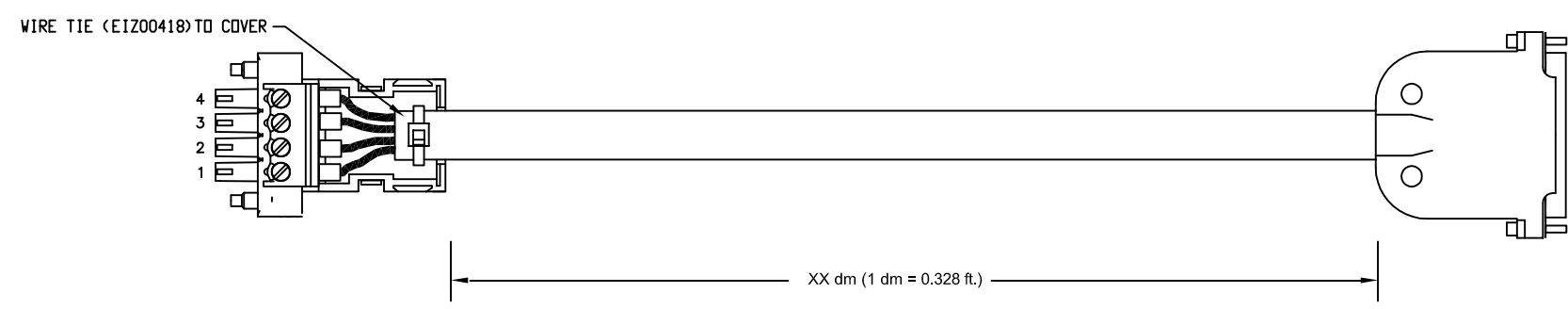


REVISIONS				
REV.	ZONE	DESCRIPTION	DATE	DRAWN

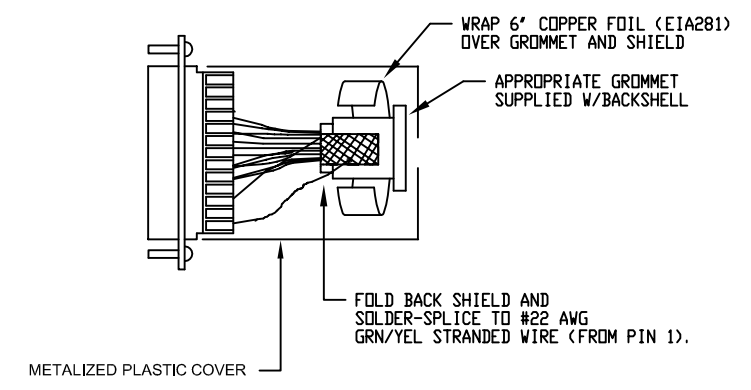


DETAIL-A
HIGH POWER DB25S
(ECK00657)
VIEW: WIRING SIDE

- AXIS MOTOR CONNECTOR (DETAIL-A)**
 (1) HIGH POWER DB25S CONNECTOR (ECK00657)
 (4) SOCKET CONTACTS (ECK00659)
 (1) DB25 BACK SHELL (ECK00656)



1 SHIELD TERMINATION WITH METALIZED PLASTIC COVERS WITH PIN 1 & SHIELD TIED TOGETHER.



PROPRIETARY INFORMATION THIS DRAWING IS THE PROPERTY OF AEROTECH, INC. AND IS SUBMITTED IN CONFIDENCE AND SHALL NOT BE REPRODUCED NOR COPIED NOR DISCLOSED TO OTHERS UNDER PENALTY OF LAW.		PART CODE: C22091-XX XX = CABLE LENGTH IN DEICMETERS	
TOLERANCES ON FRACTIONS DECIMALS ANGLES 0 TO 6 #/32 .XX ±01 ± 0-30' OVER 6 #1/16 .XXX ±005		AEROTECH, INC. 101 Zeta Drive Pittsburgh, PA. 15238 (412)963-7470 www.aerotech.com	
BRUSHLESS MOTOR CABLE 450 DECIMETERS (150') MAX LENGTH CABLE: BL MTR-4TS-4DU-HF60-4ARMS-MAX450DM		RMS FINISH EXCEPT AS NOTED	
DRAWN AGS 1/14/08 CHECKED JAB 1/14/08 APPD. JAB 1/14/08	PART CODE C22091-XX	SIZE C	REV. 630C2209-1 -
SCALE	NTS	FILE NAME	630C2209-101.DWG
SHEET	1 of 1		