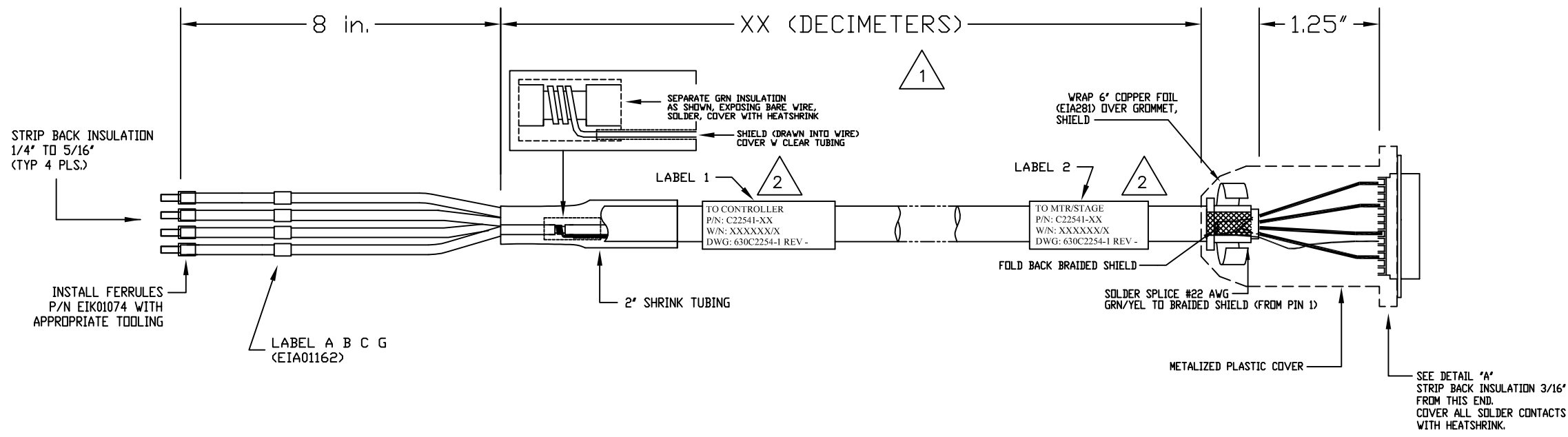
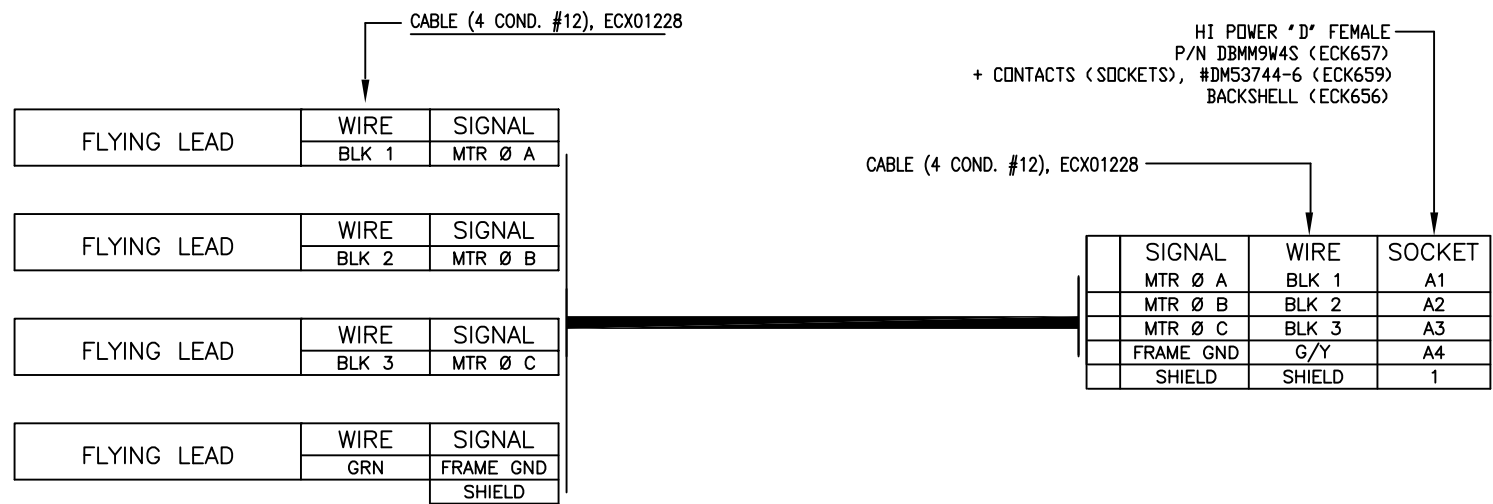
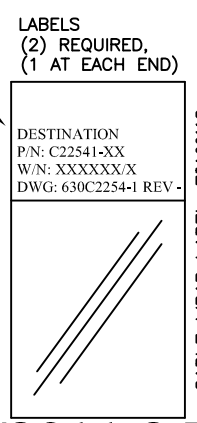
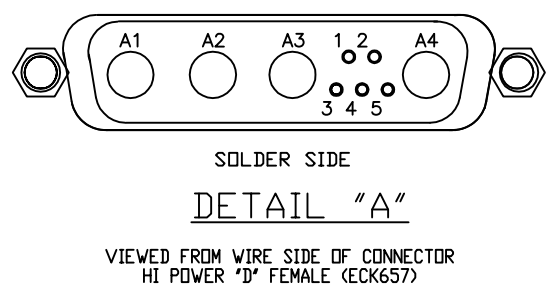


REVISIONS				
REV.	ZONE	DESCRIPTION	DATE	DRAWN



1 XX (DECIMETER) X .328 = FT.  
 STARTING LENGTH = XX FT + 1.25 FT.  
 BOM VALUE = STARTING LENGTH + 1 FT.

2 SEE LABELS 1 & 2 FOR DESTINATION



PROPRIETARY INFORMATION THIS DRAWING IS THE PROPERTY OF AEROTECH, INC. AND IS SUBMITTED IN CONFIDENCE AND SHALL NOT BE REPRODUCED NOR COPIED NOR DISCLOSED TO OTHERS UNDER PENALTY OF LAW.		
TOLERANCES ON FRACTIONS	DECIMALS	ANGLES
0 TO 6 ± 1/32	.XX ± .01	± 0-30'
OVER 6 ± 1/16	.XXX ± .005	
RMS FINISH	✓	EXCEPT AS NOTED
DRAWN	6/30/09	RWR
CHECKED	6/30/09	EJB
APPD.	6/30/09	EJB

PART CODE:	
C22541-XX	C22541-1 TO -450 MAX LENGTH (DECIMETERS)
AEROTECH, INC. 101 Zeta Drive Pittsburgh, PA. 15238 (412)963-7470 www.aerotech.com	
<b>HIGH POWER BRUSHLESS MOTOR CABLE</b> <b>450 DECIMETERS (150') MAX LENGTH</b> <b>CABLE:BL MTR-FL-4DU-20ARMS-MAX 450DM</b>	
PART CODE	SIZE
C22541-XX	C
<b>630C2254-1</b>	
REV.	-
SCALE	NTS
FILE NAME	630C2254-101.dwg
SHEET	1 OF 1