

REVISIONS			
REV.	DESCRIPTION	DATE	DRAWN
A	ADDED ECN13256	03/2011	JFRANEY

#16 FERRULE (EIK01070)	WIRE	SIGNAL
	BLK #1	MTR ØA
#16 FERRULE (EIK01070)	WIRE	SIGNAL
	BLK #2	MTR ØB
#16 FERRULE (EIK01070)	WIRE	SIGNAL
	BLK #3	MTR ØC
#16 FERRULE (EIK01070) GRN/YEL	GRN/YEL	FRM GND
	SHIELD	SHIELD

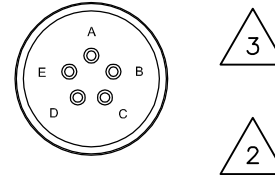
ECX01193
4 COND, #16AWG

MS CON ASSY (ECK00xxx)

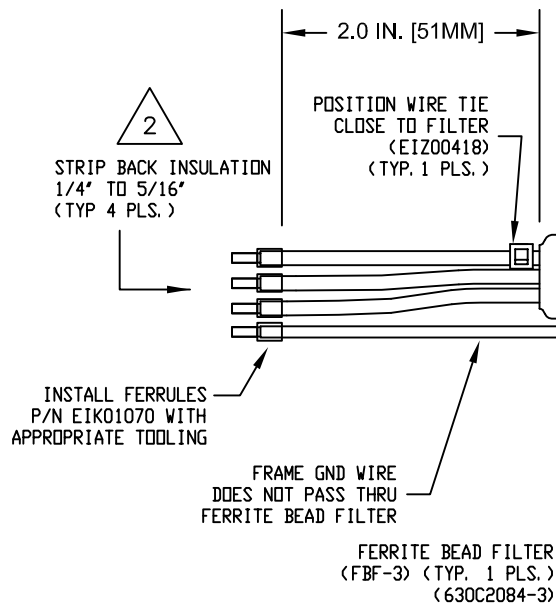
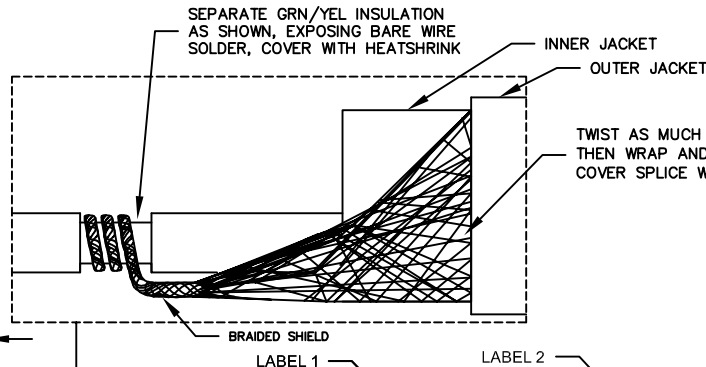
SIGNAL	WIRE	SOCKET
MTR ØA	BLK #1	A
MTR ØB	BLK #2	B
MTR ØC	BLK #3	C
FRM GND	GRN/YEL	E
SHIELD	GRN	D

WIRE SIDE VIEW

USE:
DMC CRIMPER 565
HEAD M22520/1-04



XX (DECIMETERS)



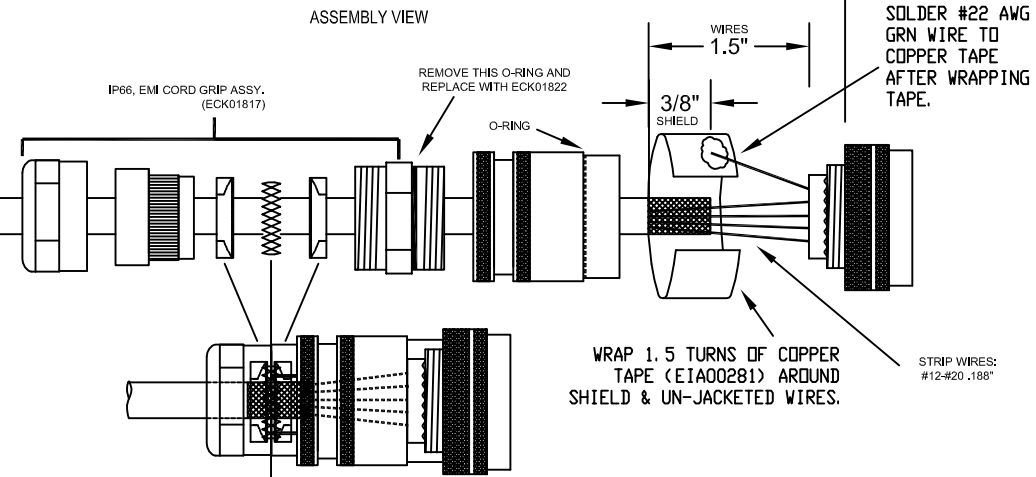
COVER EXPOSED SHIELD WITH CLEAR TUBING. SPLICE SHIELD DRAIN WIRE TO G/YEL WIRE, COVER SPLICE WITH HEAT SHRINK

2" SHRINK TUBING

CABLE (4 COND. #16), ECX01193

TO CONTROLLER C22720-50 W.O. # XXXXXX 630C2272 REV. A

TO ASRT ROTARY TABLE C22720-50 W.O. # XXXXXX 630C2272 REV. A



ASSEMBLED VIEW - (ECK1820 AND ECK1817)

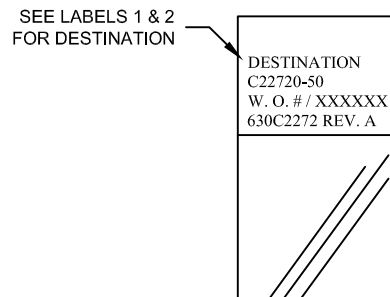
REMOVE ANY LOOSE STRANDS OF SHIELDING, TIGHTEN CONNECTOR ASSEMBLY TO 15 IN/LBS (WITH SPRING AND COMPRESSION WASHERS CONTACTING COPPER TAPE)

- 4 BE SURE CABLE CAN NOT BE PULLED OR TWISTED FREE FROM CORD GRIP.
- 3 FILL ALL CONTACT POSITIONS
- 2 WIRE MUST BE VISIBLE THRU INSPECTION HOLE BEFORE AND AFTER CRIMPING PIN.

Note: This cable assembly is IP66 rated.
Temp.: -40 to +80C (non-Moving, non-Hi-Flex)

Exception:
within Temp. range of -25 to +80C, cable may be used as Hi-Flex at 10.4mm x 10 = 104mm, min. bend radius.

LABELS:
2 REQUIRED,
(1 AT EACH END)



PROPRIETARY INFORMATION THIS DRAWING IS THE PROPERTY OF AEROTECH, INC. AND IS SUBMITTED IN CONFIDENCE AND SHALL NOT BE REPRODUCED NOR COPIED NOR DISCLOSED TO OTHERS UNDER PENALTY OF LAW.		
TOLERANCES ON FRACTIONS DECIMALS ANGLES 0 TO 6 1/32 .XX ±01 ± 0-30' OVER 6 1/16 .XXX ±005		
RMS FINISH	✓	EXCEPT AS NOTED
DRAWN	JFM	8/18/2009
CHECKED	AGS	8/20/2009
APPD.	JFM	8/21/2009

AEROTECH AEROTECH, INC. 101 Zeta Drive
Pittsburgh, PA. 15238
www.aerotech.com

WATER-PROOF IP66 MOTOR
CABLE: BL MTR-FLB-5MS-IP66-MAX450DM

PART CODE	SIZE	REV.
C22720-XX	C	A
SCALE	FILE NAME	SHEET
N/A	630C2272A1.dwg	1 of 1