

REVISIONS				
REV.	ZONE	DESCRIPTION	DATE	DRAWN

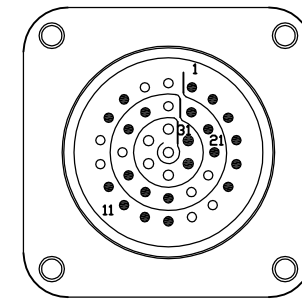
PIN	WIRE	SIGNAL
12	PINK	CW/+ LMT
11	YEL/BRN	HALL C
10	GRY/BRN	HALL A
7	YEL	MKR
6	WHT/YEL	MKR-N
5	WHT/GRN	HALL B
3	VIO	ENCODER +5V
	WHT/BLK	
	BRN/GRN	
2	GRY	THERMISTOR
1	SHIELD	OUTER SHIELD
14	WHT	COS
15	WHT/GRY	COS-N
16	BRN	HALL +5V
	RED	LIMIT +5V
17	BLUE	SIN
18	RED/BLUE	SIN-N
20	WHT/PINK	HALL COM
	BLK	LIMIT COM
	PINK/BRN	THERMISTOR COM
21	GRN	ENCODER COM
	BRN/BLU	
	BRN/RED	
	WHT/RED	
24	GRY/PINK	CCW/- LMT

SIGNAL	WIRE	SKT
CW/+ LMT	PINK	15
HALL C	YEL/BRN	11
HALL A	GRY/BRN	9
MKR	YEL	5
MKR-N	WHT/YEL	6
HALL B	WHT/GRN	10
ENCODER +5V	VIO	20
	WHT/BLK	
ENCODER +5V	BRN/GRN	31
	WHT/BLU	
THERMISTOR	GRY	12
OUTER SHIELD	SHIELD	19
COS	WHT	1
COS-N	WHT/GRY	2
HALL +5V	BRN	25
LIMIT +5V	RED	29
SIN	BLUE	3
SIN-N	RED/BLUE	4
HALL COM	WHT/PINK	24
LIMIT COM	BLK	28
THERMISTOR COM	PINK/BRN	26
ENCODER COM	GRN	21
	BRN/BLU	
	BRN/RED	
ENCODER COM	WHT/RED	32
CCW/- LMT	GRY/PINK	16

ECX01293, (25 COND. #22)



25 PIN MALE D-STYLE (ECK00786) BACKSHELL (ECK00656)

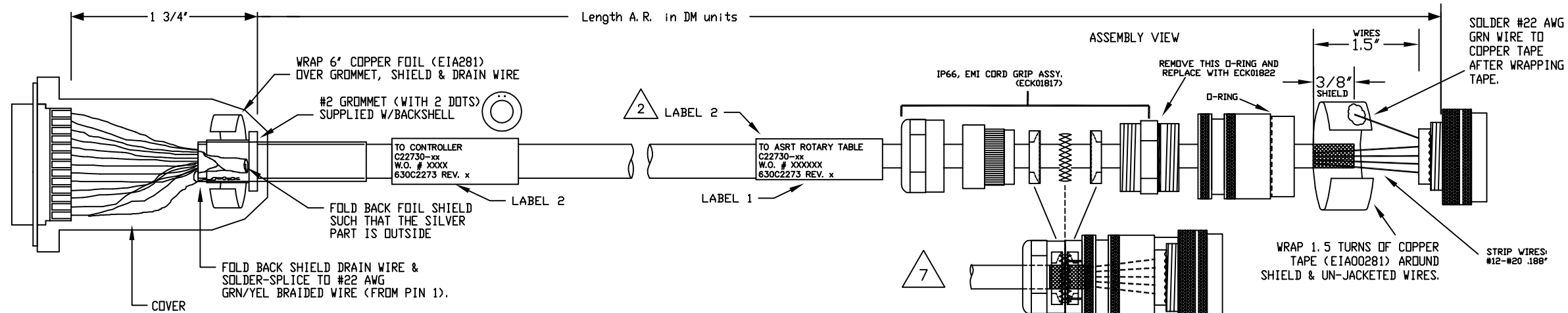


WIRE SIDE VIEW

INSERT PINS IN ALL CONTACT POSITIONS

(PIN NUMBERS SEQUENTIALLY SPIRAL INWARD CW)

USE:  
CRIMPER M22520/2-01  
HEAD M22520/2-06

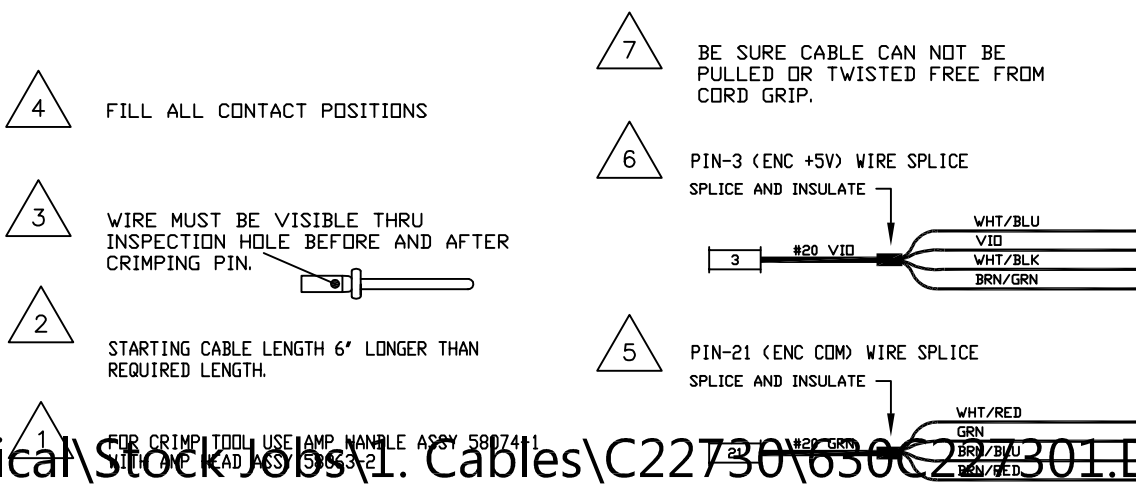


Note: This cable assembly is IP66 rated.  
Temp: -40 to +80C (non-Moving, non-HI-Flex)

Exception:  
within Temp. range of -25 to +80C, cable may be used  
as HI-Flex at 9.4mm x 12 = 113mm, min. bend radius.

ASSEMBLED VIEW - (ECK01821 AND ECK01817)

REMOVE ANY LOOSE STRANDS OF SHIELDING,  
TIGHTEN CONNECTOR ASSEMBLY TO 15 IN/LBS  
(WITH SPRING AND COMPRESSION WASHERS  
CONTACTING COPPER TAPE)



SEE LABELS 1 & 2 FOR DESTINATION  
LABELS (2) REQUIRED, (1 AT EACH END)

DESTINATION  
C22730-xx  
W.O.# /1 thru X  
630C2273 REV. 0

PROPRIETARY INFORMATION THIS DRAWING IS THE PROPERTY OF AEROTECH, INC. AND IS SUBMITTED IN CONFIDENCE AND SHALL NOT BE REPRODUCED NOR COPIED NOR DISCLOSED TO OTHERS UNDER PENALTY OF LAW.		AEROTECH, INC. 101 Zeta Drive Pittsburg, PA. 15238 (412)963-7470 www.aerotech.com	
<b>WATER-PROOF IP66 BRUSHLESS FDBK CABLE: BL FB-25DU-37MS-IP66-MAX240DM</b>			
TOLERANCES ON FRACTIONS DECIMALS ANGLES 0 TO 6 ± 1/32 .XX ± .01 ± 0-30' OVER 6 ± 1/16 .XXX ± .005		RMS FINISH <input checked="" type="checkbox"/> EXCEPT AS NOTED	
DRAWN 8/18/2009 JFM CHECKED 8/20/2009 AGS APPD. 8/21/2009 JFM	PART CODE C22730 SIZE C	630C2273	REV. -
SCALE N/A	FILE NAME 630C227301.Dwg	SHEET 1 OF 1	