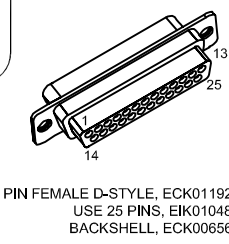
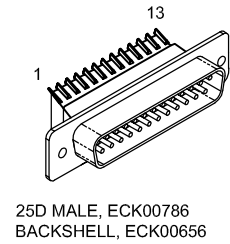


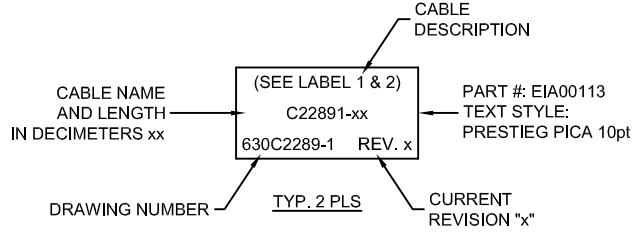
REVISIONS			
REV.	DESCRIPTION	DATE	DRAWN
A	ECN13565	9/6/11	EJB
B	ECN15059	8/22/13	AMO
C	ADDED ECN 16857	9/21/15	JFM
D	ADDED ECN 17885 - REMOVED SHIELD FROM PIN(S)	11/11/16	JFM
E	ADDED ECO 2254 (Added Note 0)	9/4/2018	JFM
F	ADDED ECO 2498	12/12/2018	JFM

PIN	WIRE	SIGNAL
13	-	-
12	#24 WHT	CW/+ LMT
11	#24 BLU	HALL C
10	#24 YEL	HALL A
9	-	-
8	-	-
7	#24 BRN	MKR
6	#24 BLK	MKR-N
5	#24 ORN	HALL B
4	#24 PNK	STAGE ID
3	#24 WHT/VIO	ENC +5V
2	#22 WHT/BRN	-
1	#24 WHT/RED	THERM
CASE	OUTER SHIELD	
14	#24 WHT/BLK	COS
15	#24 VIO	COS-N
16	#22 WHT/BLU	LMT +5V
17	#24 GRN	SIN
18	#24 RED	SIN-N
19	-	-
20	#22 WHT/GRN	LMT COM
21	#22 WHT/YEL	ENC COM
22	-	-
23	-	-
24	#24 GRY	CCW/- LMT
25	-	-

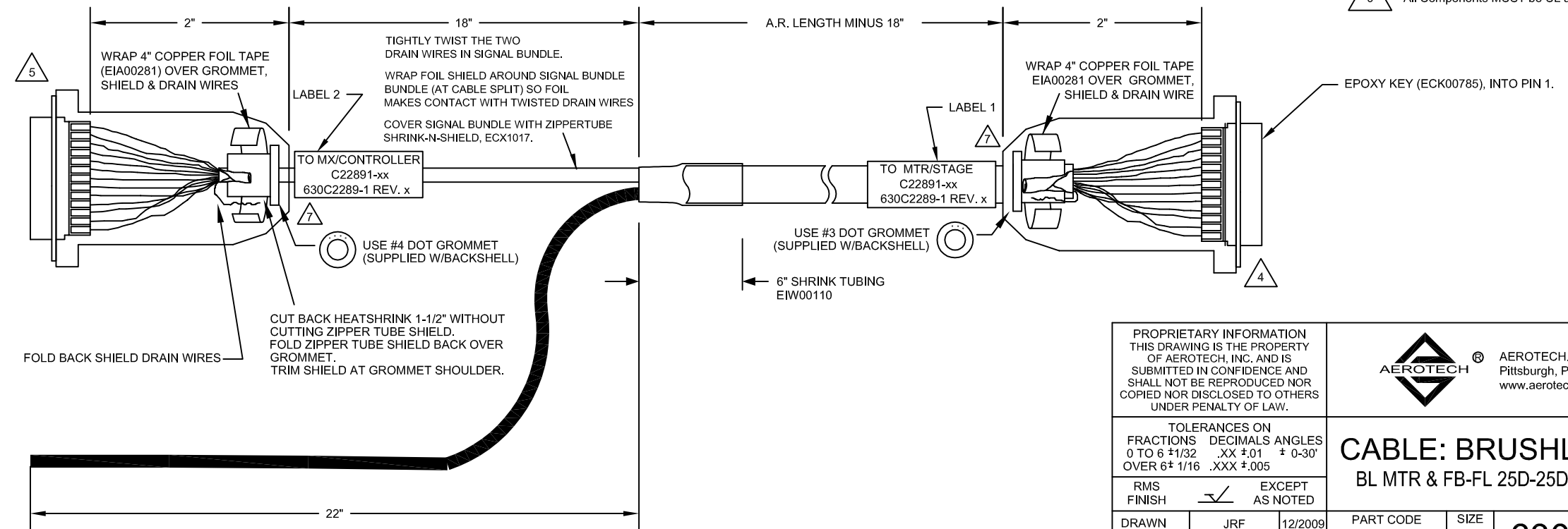
SIGNAL	WIRE	PIN
MTR ØC	#20 WHT *	13
MTR ØB	#20 RED *	12
MTR ØA	#20 BLU *	11
FRAME	#22 GRN	10
HALL C	#24 BLU	9
HALL A	#24 YEL	8
CCW/- LMT	#24 GRY	7
LMT COM	#22 WHT/GRN	6
ENC COM	#22 WHT/YEL	5
MKR-N	#24 BLK	4
SIN-N	#24 RED	3
COS-N	#24 VIO	2
NO CONNECTION	INSERT KEY	1
INNER AND OUTER SHIELDS	CASE	
COS	#24 WHT/BLK	14
SIN	#24 GRN	15
MKR	#24 BRN	16
ENC +5V	#22 WHT/BRN	17
	#22 WHT/BLU	
	#24 WHT/VIO	
STAGE ID	#24 PNK	18
CW/+ LMT	#24 WHT	19
THERM	#24 WHT/RED	20
HALL B	#24 ORN	21
FRAME	#22 GRN *	22
MTR ØA	#20 YEL *	23
MTR ØB	#20 ORN *	24
MTR ØC	#20 BRN	25



WIRE	SIGNAL
#20 WHT	MTR ØC
#20 BRN	MTR ØB
#20 RED	MTR ØA
#20 ORN	MTR ØA
#20 BLU	MTR ØA
#20 YEL	MTR ØA
#20 GRN	FRM GND
INNER SHIELD	MTR SHLD



- 7 VERIFY GROMMET IS SECURED TIGHTLY AROUND CABLE. IF NECESSARY BUILD UP WITH SHRINK TUBING.
- 5 FOR CRIMP TOOL USE AMP HANDLE ASSY 58074-1 WITH AMP HEAD ASSY 58063-2
- 4 FOR CRIMP TOOL USE DMC HANDLE ASSY M22520/2-01 WITH DMC HEAD ASSY K1S
- 3 IF THIS IS TO BE MADE BY EXTERNAL VENDOR SEND DRAWINGS 682A1031 WITH THIS DRAWING.
- 1 STARTING CABLE LENGTH SHOULD BE 6 IN LONGER THAN TOTAL LENGTH OF CABLE. LENGTH OF CABLE IS DESIGNATED BY THE xx IN CABLE NAME.
- 0 All Components MUST be UL approved



PROPRIETARY INFORMATION THIS DRAWING IS THE PROPERTY OF AEROTECH, INC. AND IS SUBMITTED IN CONFIDENCE AND SHALL NOT BE REPRODUCED NOR COPIED NOR DISCLOSED TO OTHERS UNDER PENALTY OF LAW.

AEROTECH[®] AEROTECH, INC. 101 Zeta Drive Pittsburgh, PA. 15238 www.aerotech.com

TOLERANCES ON FRACTIONS DECIMALS ANGLES 0 TO 6 ±1/32 .XX ±.01 ± 0-30' OVER 6 ± 1/16 .XXX ±.005

RMS FINISH EXCEPT AS NOTED

DRAWN	JRF	12/2009	PART CODE	SIZE	REV.
CHECKED	DES	12/2009	C22891	C	F
APPD.	ARW	12/2009	SCALE	NTS	FILE NAME
					630C2289-1.DWG
			SHEET	1 OF 1	

CABLE: BRUSHLESS MOTOR
BL MTR & FB-FL 25D-25D-10ARMS-MAX130DM

630C2289-1