

REVISIONS			
REV.	DESCRIPTION	DRAWN	DATE
A	ADDED ECN 14065	JFM	4/27/2012

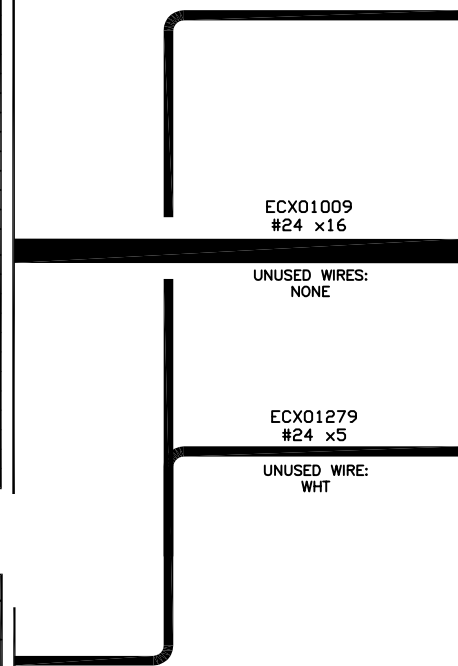
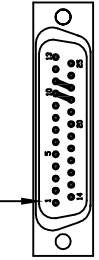
25-PIN D-MALE, ECK00786
BACKSHELL, ECK00656
ADD SCREW LOCKS
WIRE SIDE VIEW



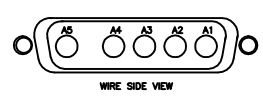
PIN	WIRE	SIGNAL
13	-	-
12	W/BRN	CW/+LMT
11	WHT	HALL C
10	BRN	HALL A
9	-	-
8	-	-
7	ORN	MKR
6	W/ORN	MKR-N
5	GRY	HALL B
4	-	-
3	VIO	ENC +5V
2	RED	THERMISTOR
1	-	-
CASE	SHIELD	SHIELD
14	YEL	COS
15	W/YEL	COS-N
16	-	-
17	BLU	SIN
18	W/BLU	SIN-N
19	-	-
20	GRN	LMT COM
21	BLK	ENC COM
22	W/GRN	ID
23	-	-
24	W/GRY	CCW/-LMT
25	-	-

SIGNAL	WIRE	PIN
-	-	13
-	-	12
MOTOR+	* #24 PNK	11
MOTOR-	* #24 GRY	10
HALL C	WHT	9
HALL A	BRN	8
CCW/-LMT	W/GRY	7
LMT COM	GRN	6
ENC COM	BLK	5
MKR-N	W/ORN	4
SIN-N	W/BLU	3
KEY	KEY	2
COS-N	W/YEL	1
BOTH SHIELDS	BOTH SHIELDS	CASE
COS	YEL	14
SIN	BLU	15
MKR	ORN	16
ENC +5V	VIO	17
THERMISTOR	RED	18
CW/+LMT	W/BRN	19
ID	W/GRN	20
HALL B	GRY	21
MOTOR-	* #24 GRN	22
MOTOR+	* #24 VIO	23
-	-	24
-	-	25

25-PIN D-FEMALE, ECK00300
BACKSHELL, ECK00656
JACKSOCKETS, ECK00129
WIRE SIDE VIEW



5 PIN MALE HPD, ECK01236
PINS x5, ECK00660
BACKSHELL, ECK00656
ADD SCREW LOCKS

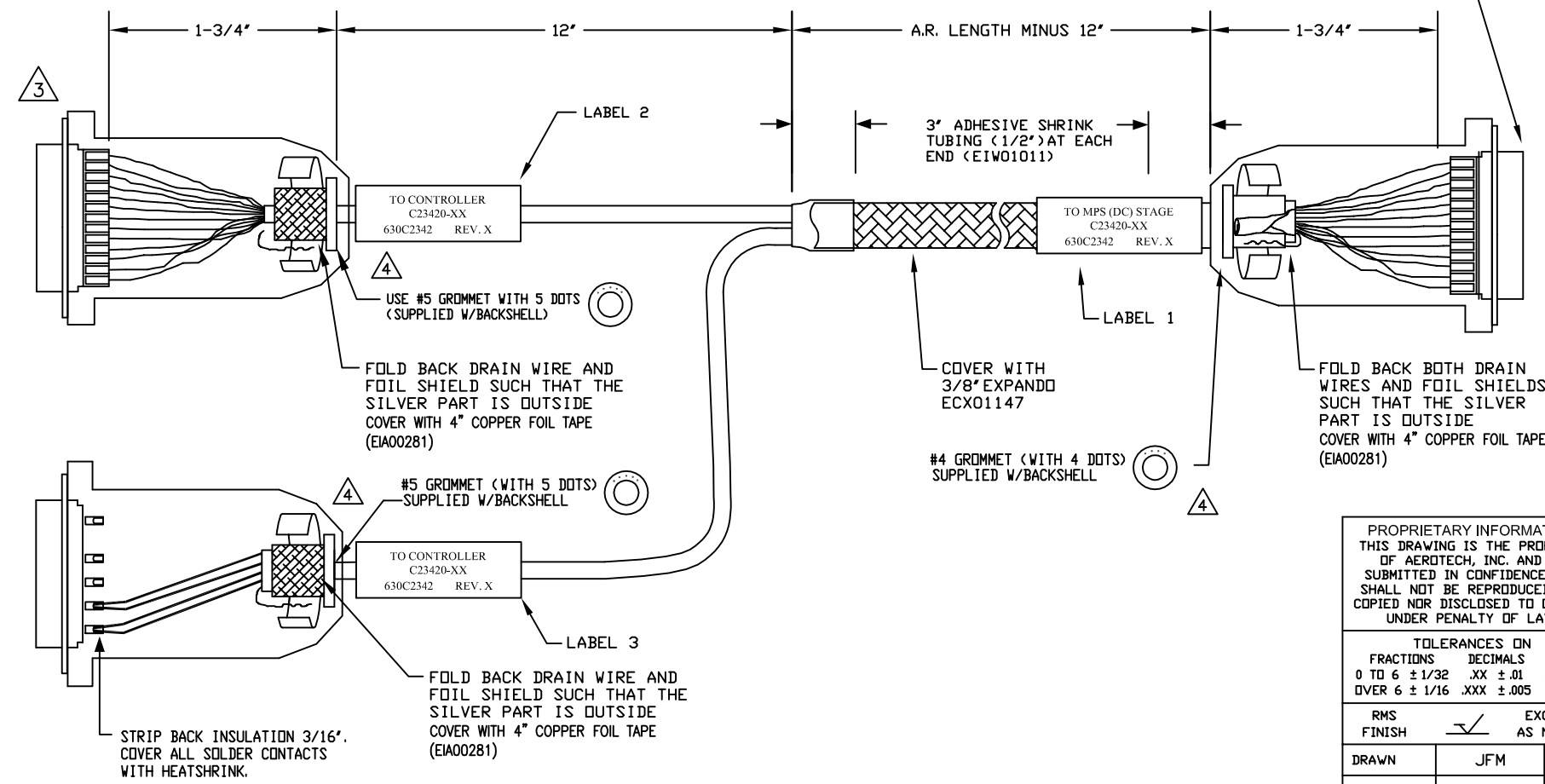
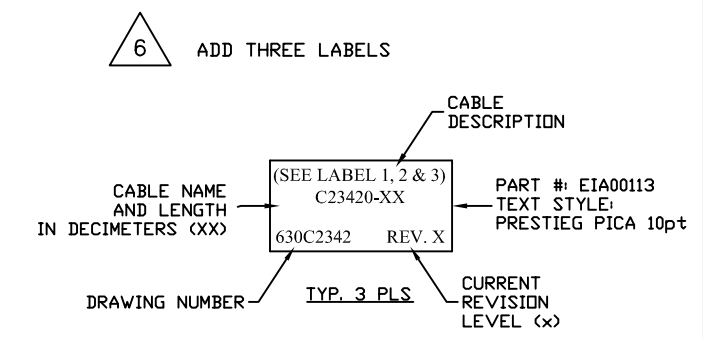


PIN	WIRE	SIGNAL
CASE	SHIELD	SHIELD
A2	#24 GRN	MTR-
A1	#22 GRY	MTR+
A1	#24 VIO	MTR+
A1	#22 PNK	MTR+

INSTALL ALL PINS IN MOTOR CONNECTOR.

* WIRES ARE FROM ECX01279

ADD GOLD JUMPER
EIK00351, 2 PLS.



- 4 VERIFY GROMMET IS SECURED TIGHTLY AROUND CABLE. IF NECESSARY BUILD UP WITH SHRINK TUBING.
- 3 FOR CRIMP TOOL USE AMP HANDLE ASSY 58074-1 WITH AMP HEAD ASSY 58063-2
- 1 STARTING CABLE LENGTH SHOULD BE 5 IN LONGER THAN TOTAL LENGTH OF CABLE. LENGTH OF CABLE IS DESIGNATED BY THE (XX) IN CABLE NAME.

PROPRIETARY INFORMATION
THIS DRAWING IS THE PROPERTY
OF AEROTECH, INC. AND IS
SUBMITTED IN CONFIDENCE AND
SHALL NOT BE REPRODUCED NOR
COPIED NOR DISCLOSED TO OTHERS
UNDER PENALTY OF LAW.

AEROTECH
AEROTECH, INC. 101 Zeta Drive
Pittsburgh, PA. 15238
(412)963-7470
www.aerotech.com

TOLERANCES ON		
FRACTIONS	DECIMALS	ANGLES
0 TO 6 ± 1/32	.XX ± .01	± 0-30'
OVER 6 ± 1/16	.XXX ± .005	

RMS FINISH	EXCEPT AS NOTED
✓	

DRAWN	JFM	6/17/11
CHECKED	ARW	6/17/11
APPD.	JFM	6/17/11

MPS SERIES DC STAGE FEEDBACK & MOTOR CABLE DC MTR & FB-25DU 5DU-25DU-MAX33DM			
PART CODE	SIZE	REV.	
C23420-XX	C	A	
630C2342			
SCALE NTS	FILE NAME	SHEET	
	630C2342A1.Dwg	1 OF 1	