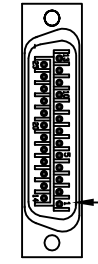


REVISIONS			
REV.	DESCRIPTION	DRAWN	DATE
A	ADDED ECN 14068	JFM	4/27/2012

25-PIN D, MALE, ECK00786  
BACKSHELL, ECK00656  
ADD SCREWLOCKS

WIRE SIDE VIEW



PIN 1

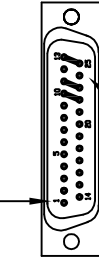
PIN	WIRE	SIGNAL
13	-	-
12	YEL	CW/+LMT
11	-	-
10	-	-
9	-	-
8	-	-
7	-	-
6	-	-
5	-	-
4	-	-
3	VIO	ENC +5V
2	W/RED	THERMISTOR
1	-	-
CASE	SHIELD/DRAIN	SHIELD
14	-	-
15	-	-
16	-	-
17	-	-
18	-	-
19	-	-
20	W/GRN	LMT COM
21	BRN	ENC COM
22	W/ORN	ID
23	-	-
24	W/GRY	CCW/-LMT
25	-	-

SIGNAL	WIRE	PIN
ØB	-	13
-	-	12
ØA	-	11
ØA, ØB RETURN	-	10
-	-	9
-	-	8
CCW/-LMT	W/GRY	7
LMT COM	W/GRN	6
ENC COM	BRN	5
-	-	4
-	-	3
KEY	KEY	2
-	-	1
BOTH SHIELDS	SHIELD/DRAIN	CASE
-	-	14
-	-	15
-	-	16
ENC +5V	VIO	17
THERMISTOR	W/RED	18
CW/+LMT	YEL	19
ID	W/ORN	20
-	-	21
ØA, ØB RETURN	* WHT	22
ØA	* BLK	23
-	-	24
ØB	* RED	25

\* WIRES ARE FROM ECX01217

25-PIN D, FEMALE, ECK00300  
BACKSHELL, ECK00656  
JACKSOCKETS, ECK00129

WIRE SIDE VIEW

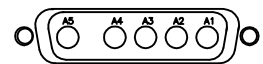


PIN 1

ADD GOLD JUMPER  
EIK00351, 3 PLS.

ADD GOLD JUMPER  
EIK00351, 3 PLS.

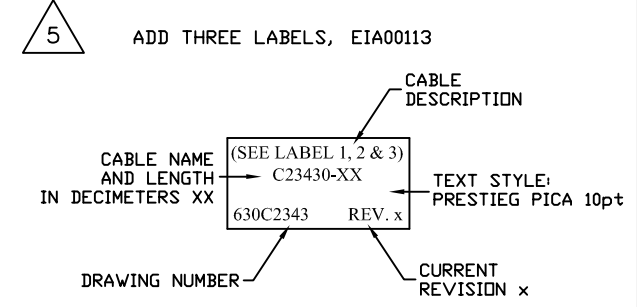
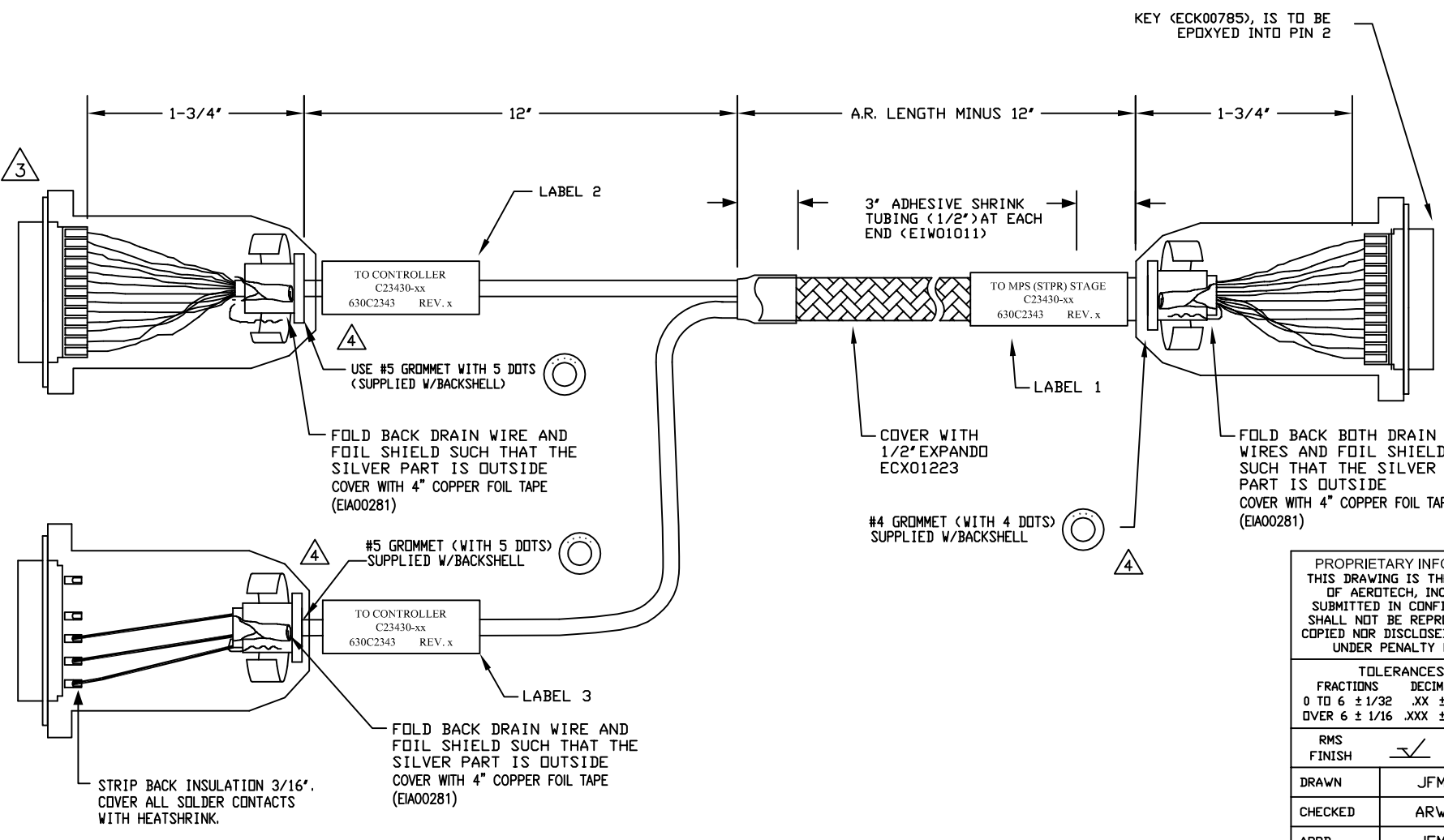
5 PIN MALE HPD, ECK01236  
PINS (5), ECK00660  
BACKSHELL, ECK00656  
ADD SCREWLOCKS



WIRE SIDE VIEW

INSTALL ALL PINS

PIN	WIRE	SIGNAL
CASE	SHIELD/DRAIN	SHIELD
A1	BLK	ØA
A2	RED	ØB
A3	WHT	ØA, ØB RETURN



4 VERIFY GROMMET IS SECURED TIGHTLY AROUND CABLE. IF NECESSARY BUILD UP WITH SHRINK TUBING.

3 FOR CRIMP TOOL USE AMP HANDLE ASSY 58074-1 WITH AMP HEAD ASSY 58063-2

1 STARTING CABLE LENGTH SHOULD BE 5 IN LONGER THAN TOTAL LENGTH OF CABLE. LENGTH OF CABLE IS DESIGNATED BY THE (XX) IN CABLE NAME.

PROPRIETARY INFORMATION  
THIS DRAWING IS THE PROPERTY OF AEROTECH, INC. AND IS SUBMITTED IN CONFIDENCE AND SHALL NOT BE REPRODUCED NOR COPIED NOR DISCLOSED TO OTHERS UNDER PENALTY OF LAW.

**AEROTECH**  
AEROTECH, INC. 101 Zeta Drive  
Pittsburgh, PA. 15238  
(412)963-7470  
www.aerotech.com

TOLERANCES ON	FRACTIONS	DECIMALS	ANGLES
0 TO 6	± 1/32	.XX ± .01	± 0-30'
OVER 6	± 1/16	.XXX ± .005	

RMS FINISH ✓ EXCEPT AS NOTED

DRAWN	JFM	6/17/11
CHECKED	ARW	6/17/11
APPD.	JFM	7/5/11

**MPS SERIES STEPPER STAGE TO NPAQ  
FEEDBACK & MOTOR CABLE  
SM & FB-25DU 5DU-25DU-MAX140DM**

PART CODE	SIZE	REV.
C23430-XX	C	A

SCALE NTS FILE NAME 630C2343A1.Dwg SHEET 1 OF 1