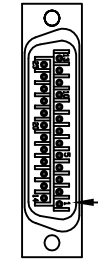


REV.		DESCRIPTION		REVISIONS		DRAWN	DATE

25-PIN D, MALE, ECK00786
BACKSHELL, ECK00656
ADD SCREWLOCKS

WIRE SIDE VIEW



PIN 1

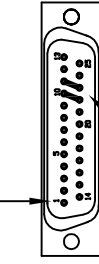
PIN	WIRE	SIGNAL
13	-	-
12	WHT/BRN	CW/+LMT
11	-	-
10	-	-
9	-	-
8	-	-
7	ORN	MKR
6	WHT/ORN	MKR-N
5	-	-
4	-	-
3	VIO	ENC +5V
2	RED	THERMISTOR
1	-	-
CASE	SHIELD/DRAIN	SHIELD
14	YEL	COS
15	WHT/YEL	COS-N
16	-	-
17	BLU	SIN
18	WHT/BLU	SIN-N
19	-	-
20	GRY	LMT COM
21	BLK	ENC COM
22	WHT/GRN	ID
23	-	-
24	WHT/GRY	CCW/-LMT
25	-	-

LABEL	WIRE	SIGNAL
G	#20 GRN/YEL	SHIELD/DRAIN
C	#20 WHT	ØC
A	#20 BLK	ØA

FERRULE, QTY. 3
EIK01001

SIGNAL	WIRE	PIN
-	-	13
-	-	12
ØA	JMP TO PIN 23	11
ØA RETURN	JMP TO PIN 22	10
-	-	9
-	-	8
CCW/-LMT	WHT/GRY	7
LMT COM	GRY	6
ENC COM	BLK	5
MKR-N	WHT/ORN	4
SIN-N	WHT/BLU	3
KEY	KEY	2
COS-N	WHT/YEL	1
BOTH SHIELDS	BOTH SHIELDS	CASE
COS	YEL	14
SIN	BLU	15
MKR	ORN	16
ENC +5V	VIO	17
THERMISTOR	RED	18
CW/+LMT	WHT/BRN	19
ID	WHT/GRN	20
-	-	21
ØA RETURN	#20 WHT	22
ØA	#20 BLK	23
-	-	24
-	-	25
N.C. AT THIS END	#20 GRN/YEL	N.C.

25-PIN D, FEMALE, ECK00300
BACKSHELL, ECK00656
JACKSOCKETS, ECK00129
WIRE SIDE VIEW



PIN 1

ADD GOLD JUMPER
EIK00351, 2 PLS.

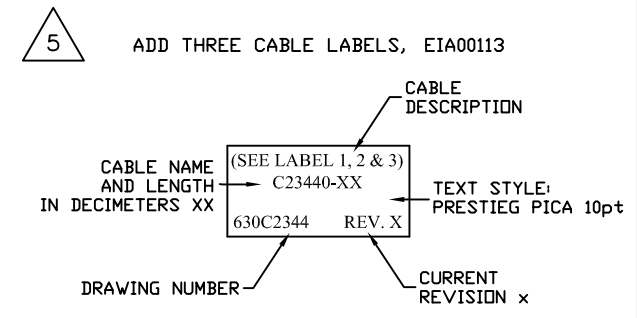
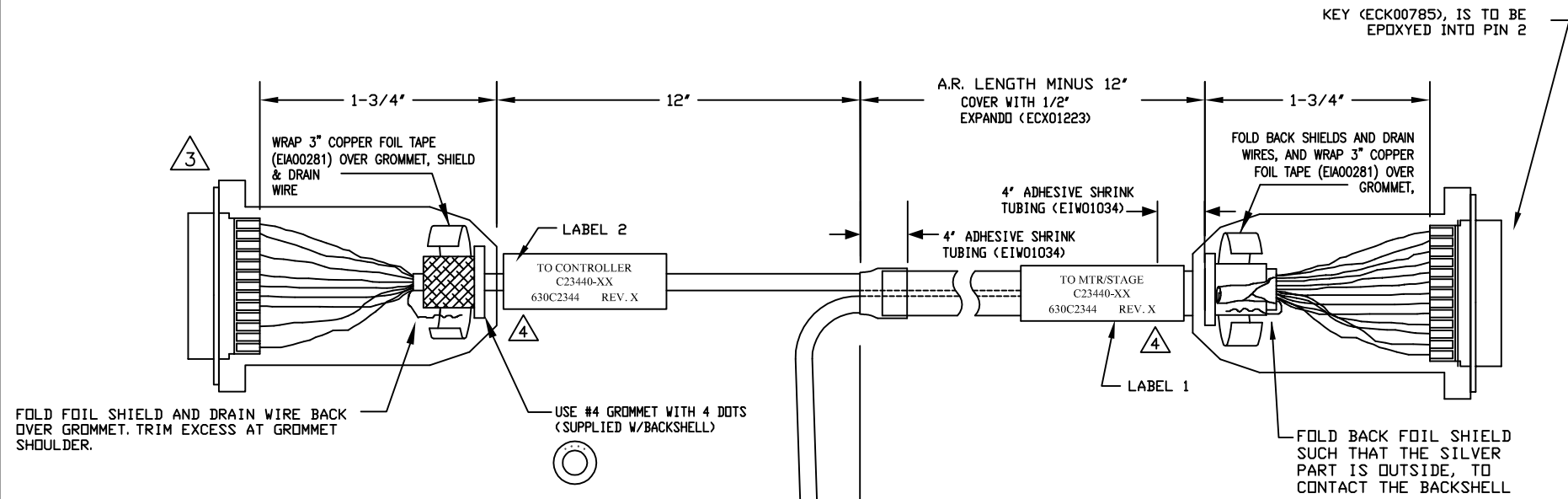
ADD GOLD JUMPER
EIK00351, 2 PLS.

ECX01009
16 COND., #24

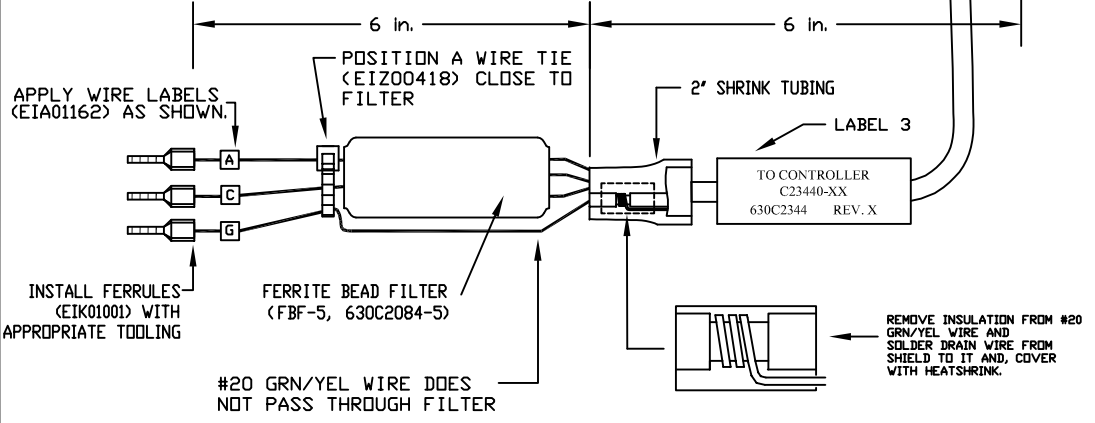
ECX01217
4 COND., #20

UNUSED WIRES:
WHT, BRN, GRN

UNUSED WIRE:
RED



- 5 ADD THREE CABLE LABELS, EIA00113
- 4 VERIFY GROMMET IS SECURED TIGHTLY AROUND CABLE. IF NECESSARY BUILD UP WITH SHRINK TUBING.
- 3 FOR CRIMP TOOL USE AMP HANDLE ASSY 58074-1 WITH AMP HEAD ASSY 58063-2
- 1 STARTING CABLE LENGTH SHOULD BE 5 IN LONGER THAN TOTAL LENGTH OF CABLE. LENGTH OF CABLE IS DESIGNATED BY THE (XX) IN CABLE NAME.



PROPRIETARY INFORMATION
THIS DRAWING IS THE PROPERTY
OF AEROTECH, INC. AND IS
SUBMITTED IN CONFIDENCE AND
SHALL NOT BE REPRODUCED NOR
COPIED NOR DISCLOSED TO OTHERS
UNDER PENALTY OF LAW.



AEROTECH, INC. 101 Zeta Drive
Pittsburgh, PA. 15238
(412)963-7470
www.aerotech.com

TOLERANCES ON	FRACTIONS	DECIMALS	ANGLES
0 TO 6	± 1/32	.XX ± .01	± 0-30'
OVER 6	± 1/16	.XXX ± .005	

RMS FINISH ✓ EXCEPT AS NOTED

DRAWN	JFM	7/19/11
CHECKED	ARW	7/19/11
APPD.	JFM	7/19/11

MPS SERIES DC STAGE TO Ndrive FEEDBACK & MOTOR CABLE DC MTR & FB-25DU FLB-25DU-MAX60DM			
PART CODE	SIZE	REV.	
C23440-XX	C	-	
630C2344		SCALE	NTS
FILE NAME	630C234401.Dwg	SHEET	1 OF 1