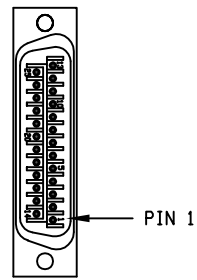


REVISIONS			
REV.	DESCRIPTION	DRAWN	DATE
A	UNRELEASED	JFM	-
B	UNRELEASED	JFM	-
C	ADDED ECN 14555	JFM	1/9/2013

25-PIN D, MALE, ECK00786
BACKSHELL, ECK00656
ADD SCREWLOCKS

WIRE SIDE VIEW



PIN	WIRE	SIGNAL
13	-	-
12	WHT/BRN	CW/+LMT
11	-	-
10	-	-
9	-	-
8	-	-
7	-	-
6	-	-
5	-	-
4	-	-
3	VIO	ENC +5V
2	RED	THERMISTOR
1	-	-
CASE	SHIELD/DRAIN	SHIELD
14	-	-
15	-	-
16	-	-
17	-	-
18	-	-
19	-	-
20	GRY	LMT COM
21	BLK	ENC COM
22	WHT/GRN	ID
23	-	-
24	WHT/GRY	CCW/-LMT
25	-	-

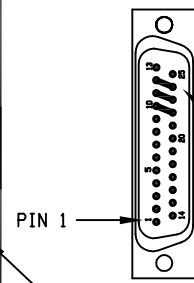
ECX01009
16 COND., #24

UNUSED WIRES:
WHT/ORN, YEL,
WHT/YEL, BLU,
WHT/BLU,
WHT, BRN,
GRN, ORN,

ECX01217
4 COND., #20

SIGNAL	WIRE	PIN
-	-	13
øB	JMP TO PIN 24	12
øA	JMP TO PIN 23	11
øA, øB RETURN	JMP TO PIN 22	10
-	-	9
-	-	8
CCW/-LMT	WHT/GRY	7
LMT COM	GRY	6
ENC COM	BLK	5
-	-	4
-	-	3
KEY	KEY	2
-	-	1
BOTH SHIELDS	BOTH SHIELDS	CASE
-	-	14
-	-	15
-	-	16
ENC +5V	VIO	17
THERMISTOR	RED	18
CW/+LMT	WHT/BRN	19
ID	WHT/GRN	20
-	-	21
øA, øB RETURN	#20 WHT	22
øA	#20 BLK	23
øB	#20 RED	24
-	-	25
N.C. AT THIS END	#20 GRN/YEL	N.C.

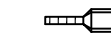
25-PIN D, FEMALE, ECK00300
BACKSHELL, ECK00656
JACKSOCKETS, ECK00129
WIRE SIDE VIEW



ADD GOLD JUMPER
EIK00351, 3 PLS.

ADD GOLD JUMPER
EIK00351, 3 PLS.

LABEL	WIRE	SIGNAL
G	#20 GRN/YEL	SHIELD/DRAIN
C	#20 WHT	øA, øB RETURN
B	#20 RED	øB
A	#20 BLK	øA

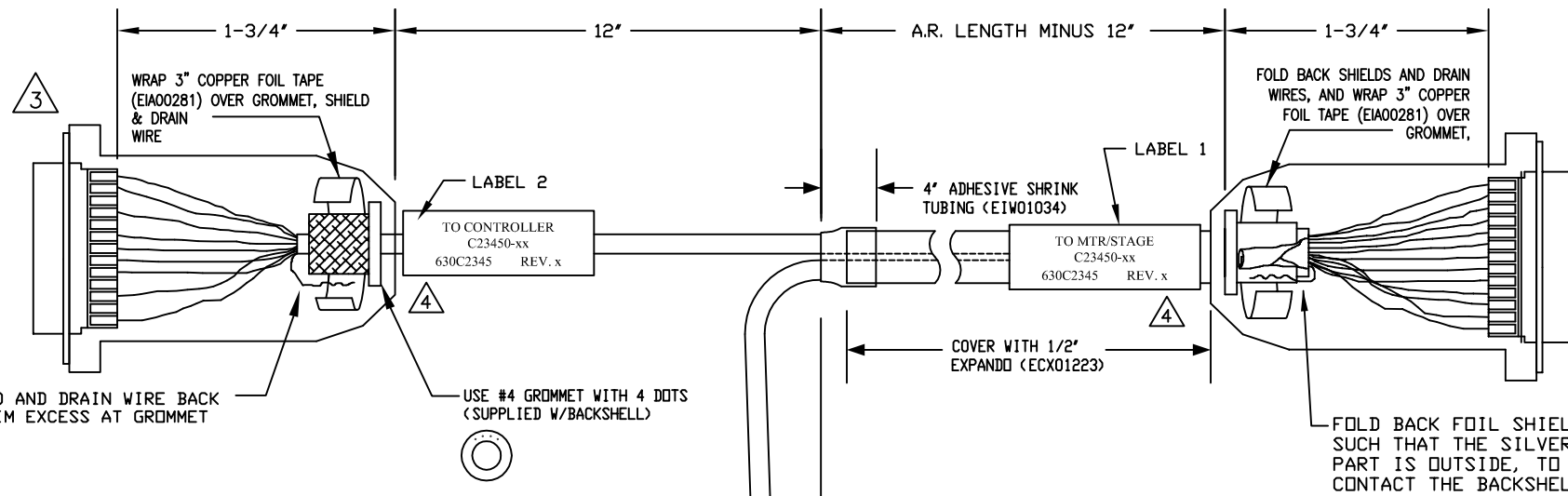


FERRULE, QTY. 4
EIK01001

KEY (ECK00785), IS TO BE
EPOXYED INTO PIN 2



ADD THREE CABLE LABELS, EIA00113



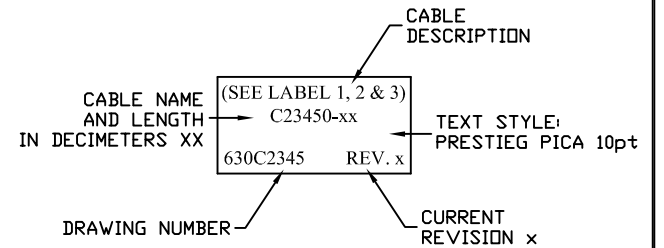
VERIFY GROMMET IS SECURED TIGHTLY AROUND
CABLE. IF NECESSARY BUILD UP WITH
SHRINK TUBING.



FOR CRIMP TOOL USE AMP HANDLE ASSY 58074-1
WITH AMP HEAD ASSY 58063-2



STARTING CABLE LENGTH SHOULD BE 5 IN
LONGER THAN TOTAL LENGTH OF CABLE. LENGTH
OF CABLE IS DESIGNATED BY THE (XX) IN
CABLE NAME.



FOLD FOIL SHIELD AND DRAIN WIRE BACK
OVER GROMMET. TRIM EXCESS AT GROMMET
SHOULDER.

USE #4 GROMMET WITH 4 DOTS
(SUPPLIED W/BACKSHELL)

FOLD BACK FOIL SHIELD
SUCH THAT THE SILVER
PART IS OUTSIDE, TO
CONTACT THE BACKSHELL

APPLY WIRE LABELS
(EIA01162) AS SHOWN.

POSITION A WIRE TIE
(EIZ00418) CLOSE TO
FILTER

INSTALL FERRULES
(EIK01001) WITH
APPROPRIATE TOOLING

FERRITE BEAD FILTER
(FBE-4, 630C2084-4)

#20 GRN/YEL WIRE DOES
NOT PASS THROUGH FILTER

REMOVE INSULATION FROM #20
GRN/YEL WIRE AND
SOLDER DRAIN WIRE FROM
SHIELD TO IT AND, COVER
WITH HEATSHRINK.

PROPRIETARY INFORMATION
THIS DRAWING IS THE PROPERTY
OF AEROTECH, INC. AND IS
SUBMITTED IN CONFIDENCE AND
SHALL NOT BE REPRODUCED NOR
COPIED NOR DISCLOSED TO OTHERS
UNDER PENALTY OF LAW.



AEROTECH, INC. 101 Zeta Drive
Pittsburgh, PA. 15238
(412)963-7470
www.aerotech.com

TOLERANCES ON
FRACTIONS DECIMALS ANGLES
0 TO 6 ± 1/32 .XX ± .01 ± 0-30'
OVER 6 ± 1/16 .XXX ± .005

RMS FINISH EXCEPT AS NOTED

DRAWN	JFM	7/6/11
CHECKED	ARW	7/6/11
APPD.	JFM	7/7/11

MPS SERIES STEPPER STAGE TO Ndrive FEEDBACK & MOTOR CABLE SM MTR & FB-25DU FLB-25DU-MAX60DM		
PART CODE	SIZE	REV.
C23450-XX	C	C
SCALE NTS		FILE NAME 630C2345C1.Dwg
SHEET 1 OF 1		