

| REV. DESCRIPTION | | REVISIONS | |
|------------------|-------------|-----------|------|
| REV. | DESCRIPTION | DRAWN | DATE |
| | | | |

25-PIN D, MALE, ECK00786
BACKSHELL, ECK00656
ADD SCREWLOCKS

WIRE SIDE VIEW



PIN 1

| PIN | WIRE | SIGNAL |
|------|--------------|------------|
| 13 | - | - |
| 12 | WHT/BRN | CW/+LMT |
| 11 | - | - |
| 10 | - | - |
| 9 | - | - |
| 8 | - | - |
| 7 | ORN | MKR |
| 6 | WHT/ORN | MKR-N |
| 5 | - | - |
| 4 | - | - |
| 3 | VIO | ENC +5V |
| 2 | RED | THERMISTOR |
| 1 | - | - |
| CASE | SHIELD/DRAIN | SHIELD |
| 14 | YEL | COS |
| 15 | WHT/YEL | COS-N |
| 16 | - | - |
| 17 | BLU | SIN |
| 18 | WHT/BLU | SIN-N |
| 19 | - | - |
| 20 | GRY | LMT COM |
| 21 | BLK | ENC COM |
| 22 | WHT/GRN | ID |
| 23 | - | - |
| 24 | WHT/GRY | CCW/-LMT |
| 25 | - | - |

ECX01009
16 COND., #24

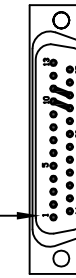
UNUSED WIRES:
WHT, BRN, GRN

ECX01217
4 COND., #20

UNUSED WIRE:
RED

| SIGNAL | WIRE | PIN |
|------------------|---------------|------|
| - | - | 13 |
| - | - | 12 |
| #A | JMP TO PIN 23 | 11 |
| #A RETURN | JMP TO PIN 22 | 10 |
| - | - | 9 |
| - | - | 8 |
| CCW/-LMT | WHT/GRY | 7 |
| LMT COM | GRY | 6 |
| ENC COM | BLK | 5 |
| MKR-N | WHT/ORN | 4 |
| SIN-N | WHT/BLU | 3 |
| KEY | KEY | 2 |
| COS-N | WHT/YEL | 1 |
| BOTH SHIELDS | BOTH SHIELDS | CASE |
| COS | YEL | 14 |
| SIN | BLU | 15 |
| MKR | ORN | 16 |
| ENC +5V | VIO | 17 |
| THERMISTOR | RED | 18 |
| CW/+LMT | WHT/BRN | 19 |
| ID | WHT/GRN | 20 |
| - | - | 21 |
| #A RETURN | #20 WHT | 22 |
| #A | #20 BLK | 23 |
| - | - | 24 |
| - | - | 25 |
| N.C. AT THIS END | #20 GRN/YEL | N.C. |

25-PIN D, FEMALE, ECK00300
BACKSHELL, ECK00656
JACKSOCKETS, ECK00129
WIRE SIDE VIEW

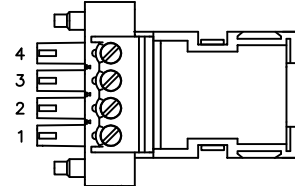


PIN 1

ADD GOLD JUMPER
EIK00351, 2 PLS.

ADD GOLD JUMPER
EIK00351, 2 PLS.

4 PIN TERMINAL BLOCK W/COVER ECK01523
HOUSING, ECK01520

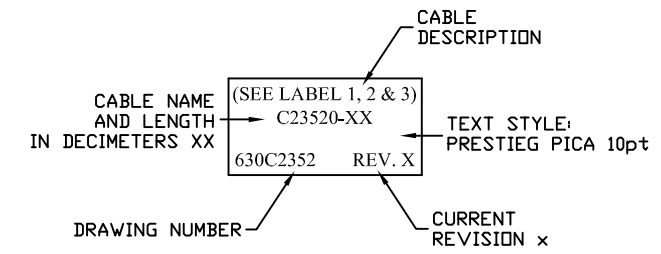
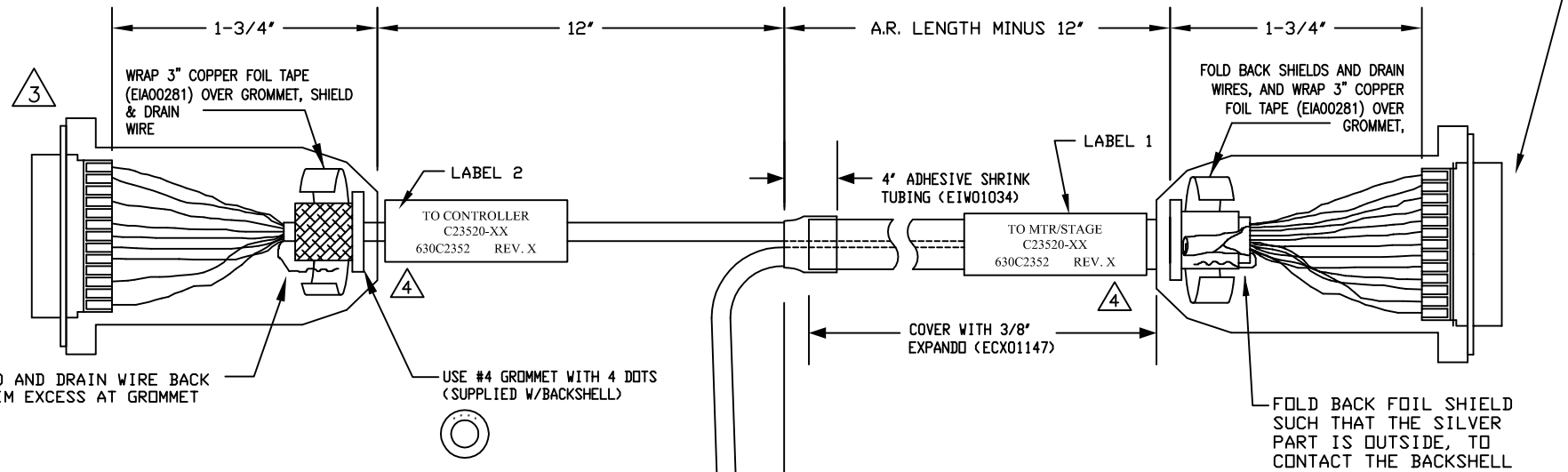


| LABEL | WIRE | SIGNAL |
|-------|-------------|--------------|
| 4 | #20 WHT | #C |
| 3 | - | - |
| 2 | #20 BLK | #A |
| 1 | #20 GRN/YEL | SHIELD/DRAIN |

KEY (ECK00785), IS TO BE
EPOXYED INTO PIN 2

5

ADD THREE CABLE LABELS, EIA00113



4

VERIFY GROMMET IS SECURED TIGHTLY AROUND CABLE. IF NECESSARY BUILD UP WITH SHRINK TUBING.

3

FOR CRIMP TOOL USE AMP HANDLE ASSY 58074-1 WITH AMP HEAD ASSY 58063-2

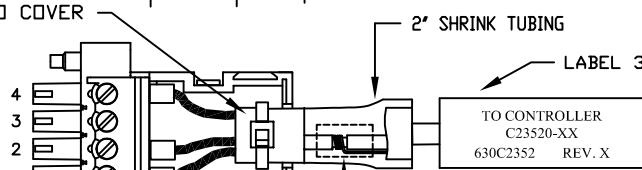
1

STARTING CABLE LENGTH SHOULD BE 5 IN LONGER THAN TOTAL LENGTH OF CABLE. LENGTH OF CABLE IS DESIGNATED BY THE (XX) IN CABLE NAME.

FOLD FOIL SHIELD AND DRAIN WIRE BACK OVER GROMMET. TRIM EXCESS AT GROMMET SHOULDER.

USE #4 GROMMET WITH 4 DOTS (SUPPLIED W/BACKSHELL)

WIRE TIE (EIZ00418) TO COVER



FERRULES P/N: EIK01001 (4 PLC'S)

REMOVE INSULATION FROM #20 GRN/YEL WIRE AND SOLDER DRAIN WIRE FROM SHIELD TO IT AND COVER WITH HEATSHRINK

PROPRIETARY INFORMATION
THIS DRAWING IS THE PROPERTY OF AEROTECH, INC. AND IS SUBMITTED IN CONFIDENCE AND SHALL NOT BE REPRODUCED NOR COPIED NOR DISCLOSED TO OTHERS UNDER PENALTY OF LAW.



AEROTECH, INC. 101 Zeta Drive
Pittsburgh, PA. 15238
(412)963-7470
www.aerotech.com

| TOLERANCES ON | | |
|---------------|-------------|---------|
| FRACTIONS | DECIMALS | ANGLES |
| 0 TO 6 ± 1/32 | .XX ± .01 | ± 0-30' |
| OVER 6 ± 1/16 | .XXX ± .005 | |

RMS FINISH ✓ EXCEPT AS NOTED

| | | |
|---------|-----|--------|
| DRAWN | JFM | 9/2/11 |
| CHECKED | RW | 9/2/11 |
| APPD. | JFM | 9/2/11 |

MPS SERIES DC STAGE TO Epaq
FEEDBACK & MOTOR CABLE
DC MTR & FB-25DU 4TS-25DU-MAX60DM

| | | |
|-----------|----------------|--------|
| PART CODE | SIZE | REV. |
| C23520-XX | C | - |
| SCALE NTS | FILE NAME | SHEET |
| | 630C235201.Dwg | 1 OF 1 |

630C2352