

REV. DESCRIPTION		REVISIONS	
REV.	DESCRIPTION	DRAWN	DATE

25-PIN D, MALE, ECK00786
BACKSHELL, ECK00656
ADD SCREWLOCKS

WIRE SIDE VIEW



PIN 1

PIN	WIRE	SIGNAL
13	-	-
12	WHT/BRN	CW/+LMT
11	-	-
10	-	-
9	-	-
8	-	-
7	-	-
6	-	-
5	-	-
4	-	-
3	VIO	ENC +5V
2	RED	THERMISTOR
1	-	-
CASE	SHIELD/DRAIN	SHIELD
14	-	-
15	-	-
16	-	-
17	-	-
18	-	-
19	-	-
20	GRY	LMT COM
21	BLK	ENC COM
22	WHT/GRN	ID
23	-	-
24	WHT/GRY	CCW/-LMT
25	-	-

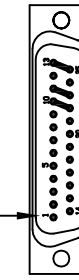
ECX01009
16 COND., #24

UNUSED WIRES:
WHT/ORN, YEL,
WHT/YEL, BLU,
WHT/BLU,
WHT, BRN,
GRN, ORN,

ECX01217
4 COND., #20

SIGNAL	WIRE	PIN
ØB	JMP TO PIN 25	13
-	-	12
ØA	JMP TO PIN 23	11
ØA, ØB RETURN	JMP TO PIN 22	10
-	-	9
-	-	8
CCW/-LMT	WHT/GRY	7
LMT COM	GRY	6
ENC COM	BLK	5
-	-	4
-	-	3
KEY	KEY	2
-	-	1
BOTH SHIELDS	BOTH SHIELDS	CASE
-	-	14
-	-	15
-	-	16
ENC +5V	VIO	17
THERMISTOR	RED	18
CW/+LMT	WHT/BRN	19
ID	WHT/GRN	20
-	-	21
ØA, ØB RETURN	#20 WHT	22
ØA	#20 BLK	23
-	-	24
ØB	#20 RED	25
N.C. AT THIS END	#20 GRN/YEL	N.C.

25-PIN D, FEMALE, ECK00300
BACKSHELL, ECK00656
JACKSCKETS, ECK00129
WIRE SIDE VIEW

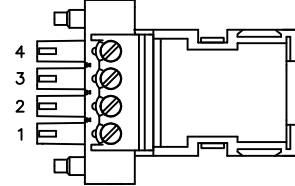


PIN 1

ADD GOLD JUMPER
EIK00351, 3 PLS.

ADD GOLD JUMPER
EIK00351, 3 PLS.

4 PIN TERMINAL BLOCK W/COVER ECK01523
HOUSING, ECK01520

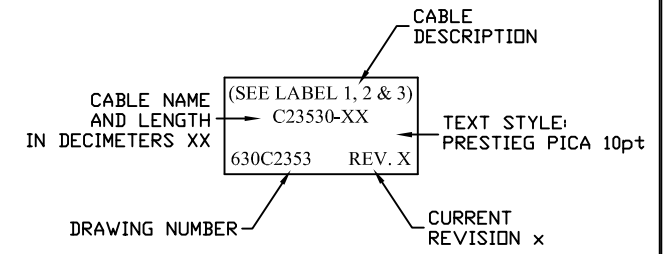


LABEL	WIRE	SIGNAL
4	#20 WHT	ØA, ØB RETURN
3	#20 RED	ØB
2	#20 BLK	ØA
1	#20 GRN/YEL	SHIELD/DRAIN

KEY (ECK00785), IS TO BE
EPOXYED INTO PIN 2

5

ADD THREE CABLE LABELS, EIA00113



4

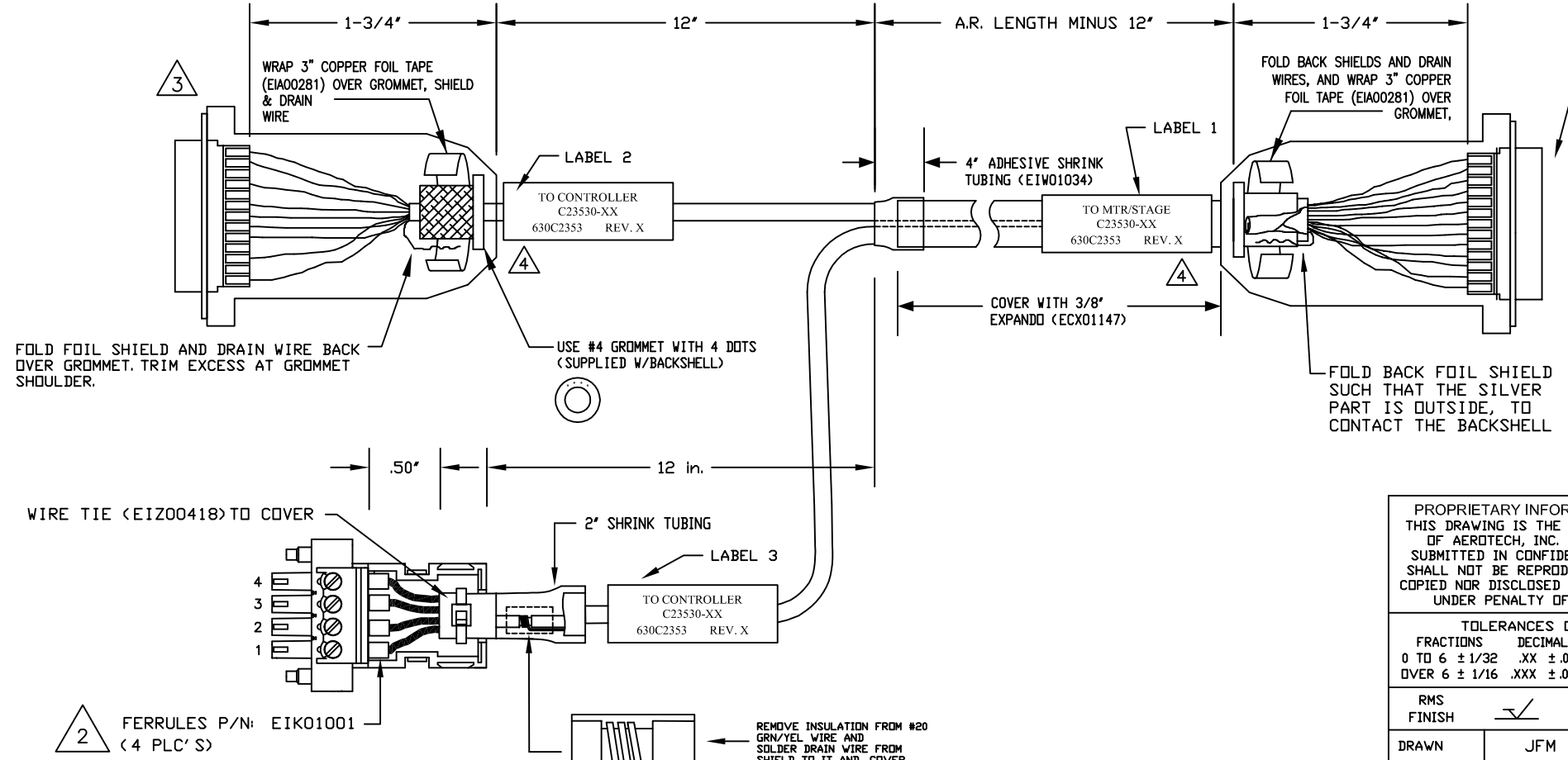
VERIFY GROMMET IS SECURED TIGHTLY AROUND
CABLE. IF NECESSARY BUILD UP WITH
SHRINK TUBING.

3

FOR CRIMP TOOL USE AMP HANDLE ASSY 58074-1
WITH AMP HEAD ASSY 58063-2

1

STARTING CABLE LENGTH SHOULD BE 5 IN
LONGER THAN TOTAL LENGTH OF CABLE. LENGTH
OF CABLE IS DESIGNATED BY THE (XX) IN
CABLE NAME.



FERRULES P/N: EIK01001
(4 PLC'S)

REMOVE INSULATION FROM #20
GRN/YEL WIRE AND
SOLDER DRAIN WIRE FROM
SHIELD TO IT AND COVER
WITH HEATSHRINK

PROPRIETARY INFORMATION
THIS DRAWING IS THE PROPERTY
OF AEROTECH, INC. AND IS
SUBMITTED IN CONFIDENCE AND
SHALL NOT BE REPRODUCED NOR
COPIED NOR DISCLOSED TO OTHERS
UNDER PENALTY OF LAW.

FRACTIONS	DECIMALS	ANGLES
0 TO 6 ± 1/32	.XX ± .01	± 0-30'
OVER 6 ± 1/16	.XXX ± .005	

RMS FINISH EXCEPT AS NOTED

DRAWN	JFM	9/2/11
CHECKED	RW	9/2/11
APPD.	JFM	9/2/11

AEROTECH®
AEROTECH, INC. 101 Zeta Drive
Pittsburgh, PA. 15238
(412)963-7470
www.aerotech.com

MPS SERIES STEPPER STAGE TO Epaq
FEEDBACK & MOTOR CABLE
SM & FB-25DU 4TS-25DU-MAX60DM

PART CODE	SIZE	REV.
C23530-XX	C	-
SCALE NTS	FILE NAME	SHEET
	630C235301.Dwg	1 OF 1