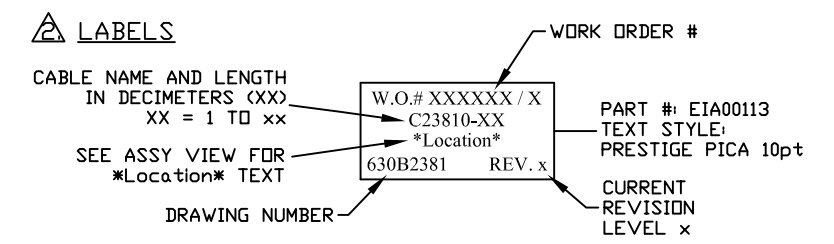
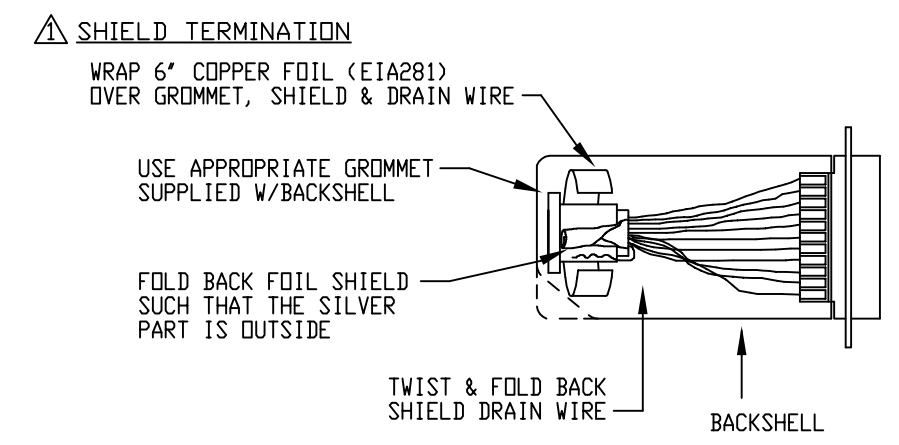
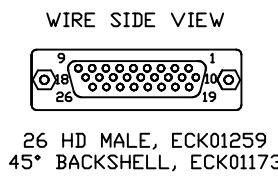
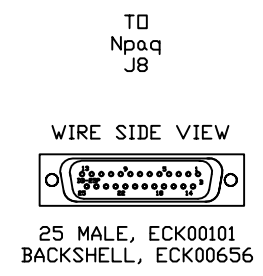
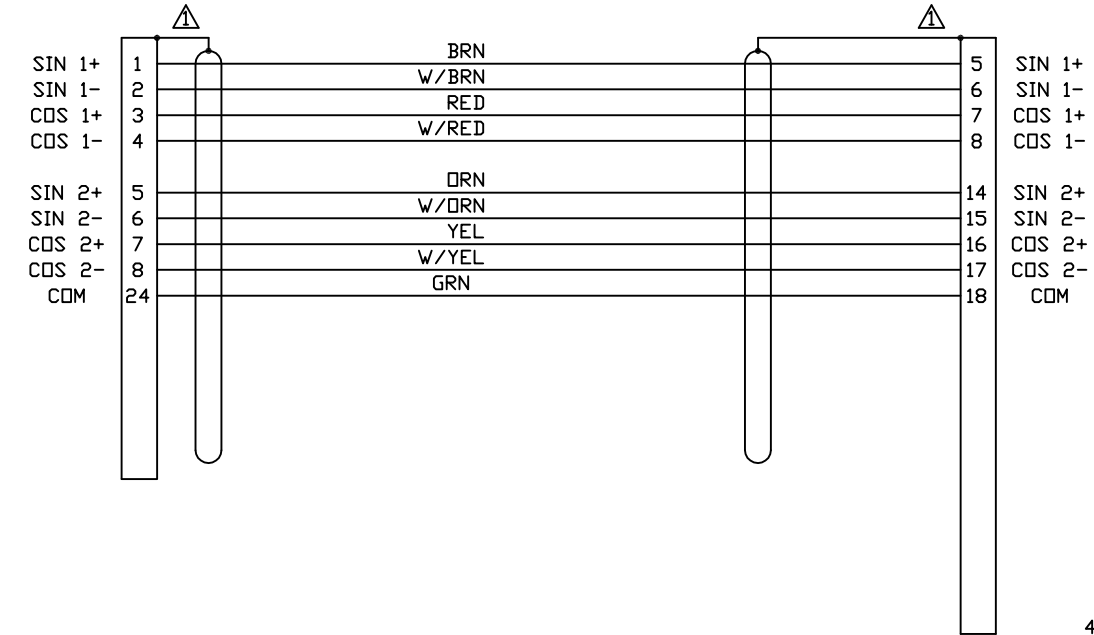


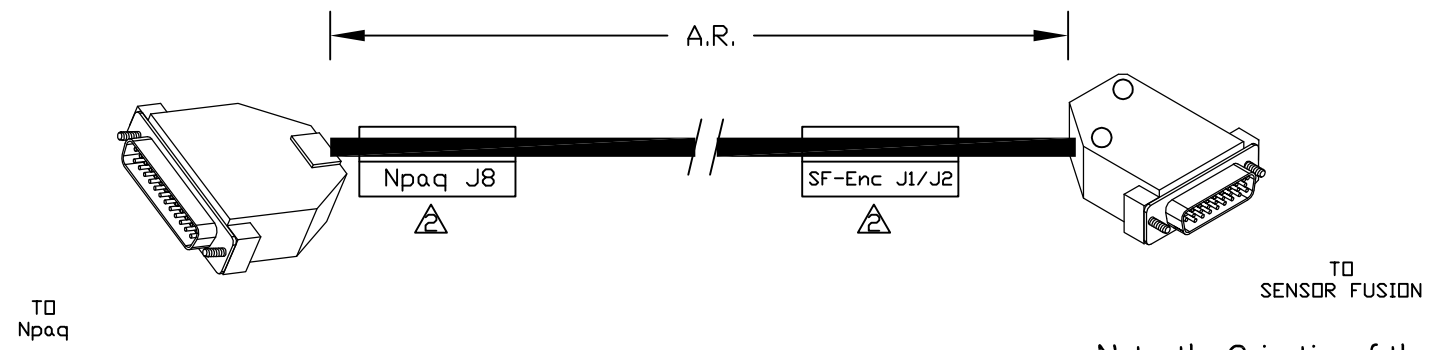
REVISIONS				
REV.	ZONE	DESCRIPTION	DATE	DRAWN

ECX01338
14 COND. #28
LENGTH A.R. SEE NOTE 3.



⚠ LENGTH

CAUTION, CABLE LENGTHS (XX) ARE IN DECIMETERS
EXAMPLE: C23810-3
3 = 3 DECIMETERS (300mm) = 1FT.



Note, the Orientation of the 45°
backshells, relative to the D-style
connector

PROPRIETARY INFORMATION
THIS DRAWING IS THE PROPERTY
OF AEROTECH, INC. AND IS
SUBMITTED IN CONFIDENCE AND
SHALL NOT BE REPRODUCED NOR
COPIED NOR DISCLOSED TO OTHERS
UNDER PENALTY OF LAW.



AEROTECH, INC. 101 Zeta Drive
Pittsburgh, PA. 15238
(412)963-7470
www.aerotech.com

TOLERANCES ON		
FRACTIONS	DECIMALS	ANGLES
0 TO 6 ± 1/32	.XX ± .01	± 0-30'
OVER 6 ± 1/16	.XXX ± .005	

RMS FINISH EXCEPT AS NOTED

SENSOR FUSION CABLE DUAL ENCODER INPUT FROM NPAQ SF FB-26HD-25D-MAX100DM

DRAWN	JFM	6/5/2012	PART CODE	SIZE	REV.
CHECKED	AGS	6/5/2012	C23810	B	-
APPD.	JFM	6/5/2012	SCALE NTS	FILE NAME	SHEET
				630B238101.Dwg	1 OF 1

630B2381