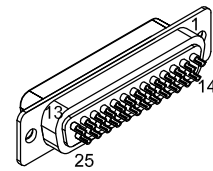


REV.		DESCRIPTION	DRAWN	DATE
A		ADDED ECO 2449	JFM	11/14/2018

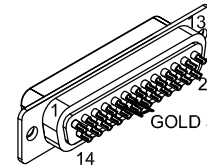
PIN	WIRE	SIGNAL
13	-	-
12	-	-
11	WHT/BLK	HALL C
10	WHT/GRY	HALL A
9	-	-
8	PNK	DATA-N
7	ORN	CLK
6	WHT/ORN	CLK-N
5	WHT/BRN	HALL B
4	BRN	ID
3	#24 VIO	ENC +5
2	WHT/RED	THERMISTOR
1	-	-
CASE	OUTER SHIELD	OUTER SHIELD

FERRULE	COLOR	SIGNAL
EIK01098	#22 BLK	MTR ØA
EIK01098	#22 RED	MTR ØB
EIK01098	#22 WHT	MTR ØC
EIK01098	#22 GRN/YEL	FRAME / INNER SHLD

SIGNAL	WIRE	PIN
MTR ØB	#22 RED	13
MTR ØA	#22 BLK	12
KEY	KEY	11
HALL C	WHT/BLK	10
-	-	9
-	-	8
DATA-N	PNK	7
LMT COM	#26 GRN/RED	6
ENC COM	#24 GRN	5
CLK-N	WHT/ORN	4
SIN-N	WHT/BLU	3
COS-N	WHT/YEL	2
THERMISTOR	WHT/RED	1
BOTH SHIELDS	BOTH SHIELDS	CASE
COS	YEL	14
SIN	BLU	15
CLK	ORN	16
ENC +5V	#24 VIO	17
ID	BRN	18
DATA	GRY	19
-	-	20
-	-	21
HALL A	WHT/GRY	22
HALL B	WHT/BRN	23
FRAME	#22 GRN/YEL	24
MTR ØC	#22 WHT	25



25 PIN D-STYLE MALE, ECK00101
BACKSHELL, ECK00656



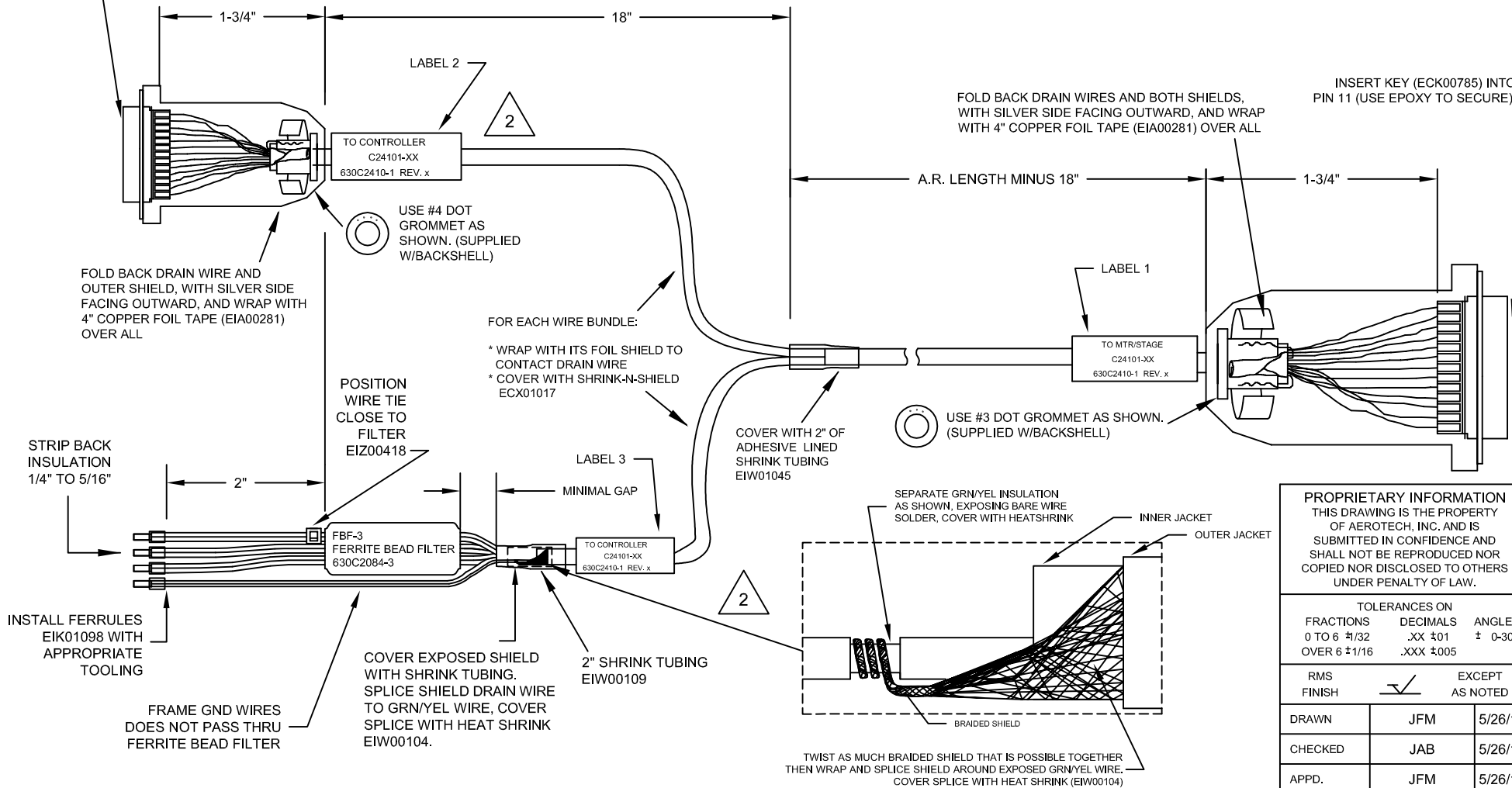
25 PIN D-STYLE FEMALE, ECK00300
BACKSHELL, ECK00656
JACK SOCKETS, ECK00129

ECX01439
27 COND., #22x8, #24x4, #26x2, #28x13
ALL #28, UNLESS NOTED

GOLD JUMPER, EIK00351

GOLD JUMPER, EIK00351

REMOVE PIN 11



- 3 INNER SHIELD TERMINATION
UNWRAP INNER FOIL SHIELD AS FAR BACK AS POSSIBLE. SEPARATE GRN/YEL WIRE INSULATION. SOLDER-SPLICE INNER DRAIN WIRE TO GRN/YEL WIRE. WRAP INNER FOIL SHIELD OVER SOLDER-SPLICE. COVER INNER BUNDLE, SPLICE & INNER SHIELD WITH SHRINK TUBING AS FAR INTO CABLE AS POSSIBLE.
- 2 LABEL CABLE AS INDICATED, WITH EIA00113.
- 1 STARTING CABLE LENGTH SHOULD BE 4 IN LONGER THAN TOTAL LENGTH OF CABLE, AS DESIGNATED BY THE "-XX" IN THE CABLE PART NUMBER.

PROPRIETARY INFORMATION
THIS DRAWING IS THE PROPERTY OF AEROTECH, INC. AND IS SUBMITTED IN CONFIDENCE AND SHALL NOT BE REPRODUCED NOR COPIED NOR DISCLOSED TO OTHERS UNDER PENALTY OF LAW.

AEROTECH®
AEROTECH, INC., 101 Zeta Drive
Pittsburgh, PA. 15238-2897, USA
HTTP://www.aerotech.com

TOLERANCES ON		
FRACTIONS	DECIMALS	ANGLES
0 TO 6 1/32	.XX ±01	± 0-30°
OVER 6 1/16	.XXX ±005	

RMS FINISH	EXCEPT AS NOTED
✓	

DRAWN	JFM	5/26/17
CHECKED	JAB	5/26/17
APPD.	JFM	5/26/17

CABLE: C24101		BL MTR & FB-FLB 25D-25DJS-5ARMS-KEY11-MAX90DM	
PART CODE	SIZE	REV.	
C24101	C	A	
SCALE	NTS	FILE NAME	630C2410-1.Dwg
SHEET	1 OF 1		