

REV.		DESCRIPTION		REVISIONS		DRAWN	DATE
A		INITIAL REV.		AF			12/18

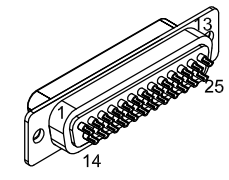
PIN	WIRE	SIGNAL
13	-	-
12	-	-
11	WHT/BLK	HALL C
10	WHT/GRY	HALL A
9	-	-
8	PNK	DATA-N
7	ORG	CLK
6	WHT/ORG	CLK-N
5	WHT/BRN	HALL B
4	BRN	ID
3	#24 VIO	ENC +5
2	WHT/RED	THERMISTOR
1	-	-
CASE	OUTER SHIELD	OUTER SHIELD

SIGNAL	WIRE	PIN
MTR ØB	#22 RED	13
	#22 RED/ORG	
MTR ØA	#22 BLK	12
	#22 BLK/ORG	
KEY	KEY	11
HALL C	WHT/BLK	10
-	-	9
-	-	8
DATA-N	PNK	7
LMT COM	#26 GRN/RED	6
ENC COM	#24 GRN	5
	#24 GRN/WHT	
CLK-N	WHT/ORG	4
SIN-N	WHT/BLU	3
COS-N	WHT/YEL	2
THERMISTOR	WHT/RED	1
BOTH SHIELDS	BOTH SHIELDS	CASE

PIN	COLOR	SIGNAL
1	#22 BLK	MTR ØA
	#22 BLK/ORG	
2	#22 RED	MTR ØB
	#22 RED/ORG	
3	#22 WHT	MTR ØC
	#22 WHT/ORG	
5	#22 GRN/YEL	FRAME / INNER SHLD
	#22 GRN/ORG	

27 COND., #22x8, #24x4, #26x2, #28x13  
ALL #28, UNLESS NOTED  
(ECX01439)

GOLD JUMPER  
(EIK00351)



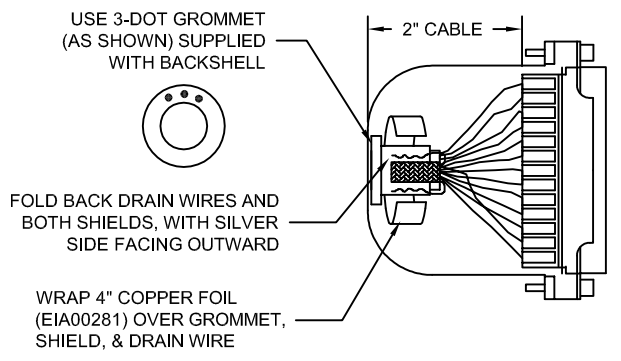
25 PIN D-STYLE FEMALE CONNECTOR (ECK00300)  
BACKSHELL (ECK00656)  
JACK SOCKETS (ECK00129)

5.) ALL TOLERANCES ARE +/- .25"

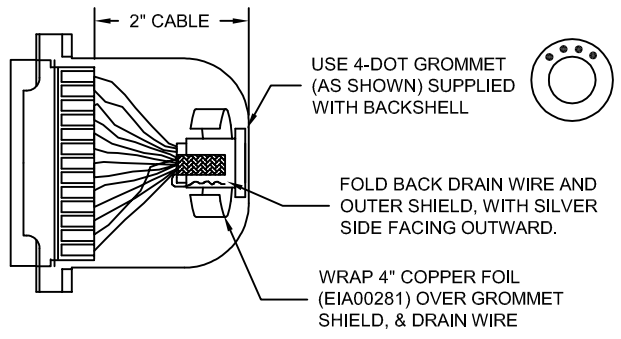
FOR EACH WIRE BUNDLE:

- (a) WRAP WITH ITS FOIL SHIELD TO CONTACT DRAIN WIRE.
- (b) COVER WITH SHRINK-N-SHIELD (ECX01017).

CONNECTOR SHIELDING:



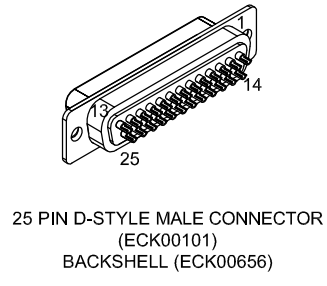
CONNECTOR SHIELDING:



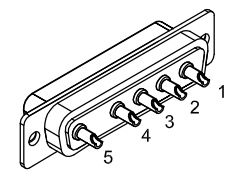
CABLE LENGTH:

CABLE LENGTHS (XX) ARE IN DECIMETERS  
EXAMPLE: FOR C24104-30, 30=30 DECIMETERS (3 METERS).  
STARTING CABLE LENGTH SHOULD BE 4" LONGER THAN TOTAL LENGTH OF CABLE.

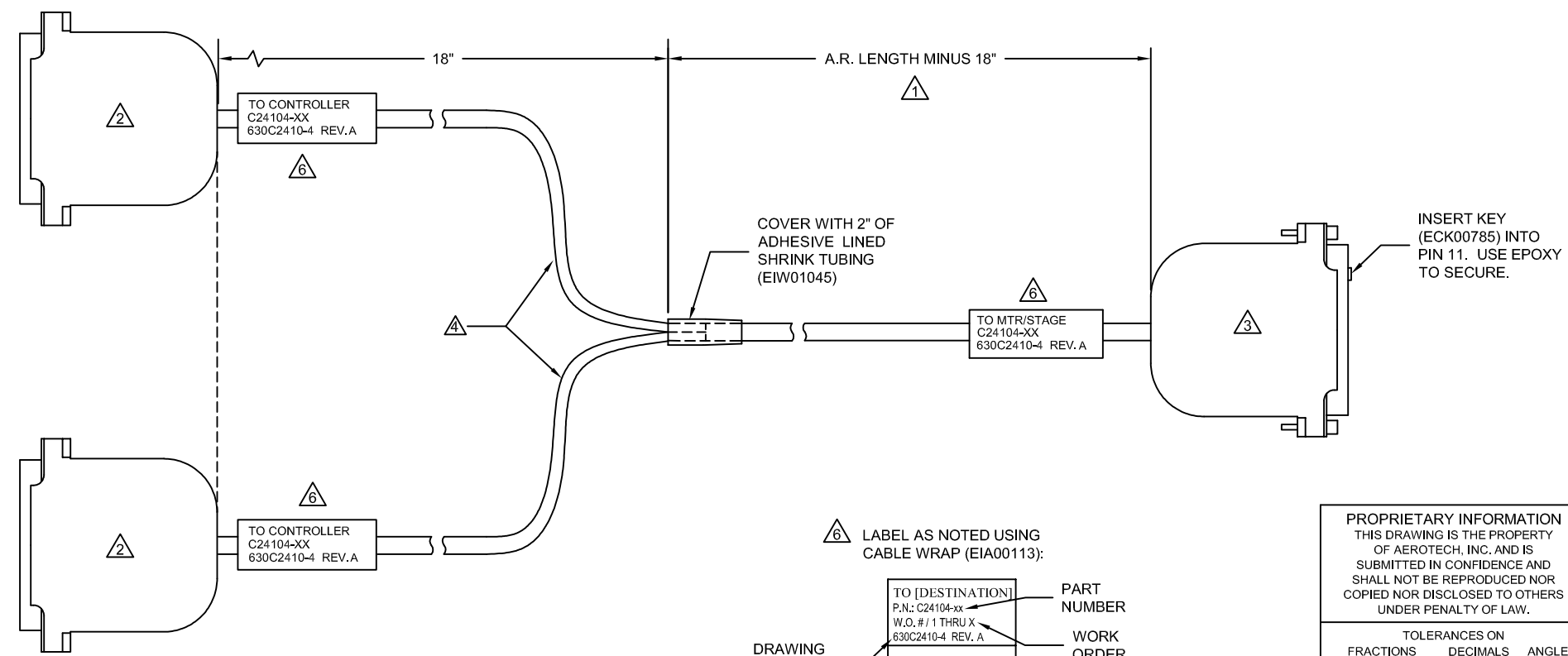
NOTES:



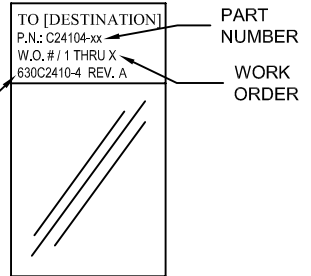
25 PIN D-STYLE MALE CONNECTOR (ECK00101)  
BACKSHELL (ECK00656)



5 PIN D-STYLE MALE HPD (ECK01236)  
MALE PIN (ECK00660) (TYP. 5 PLS.)  
BACKSHELL (ECK00656)



LABEL AS NOTED USING CABLE WRAP (EIA00113):



PROPRIETARY INFORMATION  
THIS DRAWING IS THE PROPERTY OF AEROTECH, INC. AND IS SUBMITTED IN CONFIDENCE AND SHALL NOT BE REPRODUCED NOR COPIED NOR DISCLOSED TO OTHERS UNDER PENALTY OF LAW.

**AEROTECH** AEROTECH, INC., 101 Zeta Drive  
Pittsburgh, PA. 15238-2897, USA  
HTTP://www.aerotech.com

TOLERANCES ON FRACTIONS DECIMALS ANGLES  
0 TO 6 1/32 .XX ±01 ± 0-30'  
OVER 6 1/16 .XXX ±005

RMS FINISH EXCEPT AS NOTED

DRAWN	AF	12/18
CHECKED	ZGK	12/18
APPD.	JFM, NR	12/18

**CABLE: C24104**  
BL MTR + ABS-FB -25D  
5D-25DJS-5ARMS-KEY11-MAX96DM

PART CODE	SIZE	REV.
C24104-XX	C	A
SCALE	FILE NAME	SHEET
NTS	630C2410-4SHT1.dwg	1 OF 1