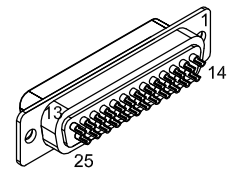
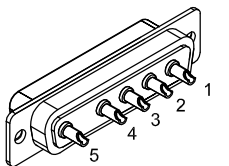


REVISIONS			
REV.	DESCRIPTION	DRAWN	DATE
A	INITIAL REV.	AF	12/18



25 PIN D-STYLE MALE CONNECTOR (ECK00101) BACKSHELL (ECK00656)



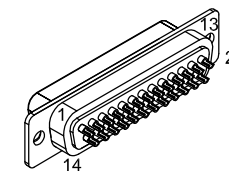
5 PIN D-STYLE MALE HPD (ECK01236) MALE PIN (ECK00660) (TYP. 5 PLS.) BACKSHELL (ECK00656)

PIN	WIRE	SIGNAL
13	-	-
12	PNK	CW
11	WHT/BLK	HALL C
10	WHT/GRY	HALL A
9	-	-
8	-	DATA-N
7	ORG	MKR
6	WHT/ORG	MKR-N
5	WHT/BRN	HALL B
4	BRN	ID
3	#24 VIO	ENC +5
2	WHT/RED	THERMISTOR
1	-	-
CASE	OUTER SHIELD	OUTER SHIELD

PIN	COLOR	SIGNAL
1	#22 BLK	MTR ØA
2	#22 RED	MTR ØB
3	#22 WHT	MTR ØC
5	#22 GRN/YEL	FRAME / INNER SHLD

27 COND., #22x8, #24x4, #26x2, #28x13 ALL #28, UNLESS NOTED (ECX01439)

SIGNAL	WIRE	PIN
MTR ØC	#22 WHT	13
MTR ØB	#22 RED	12
MTR ØA	#22 BLK	11
FRAME	#22 GRN/YEL	10
HALL C	WHT/BLK	9
HALL A	WHT/GRY	8
CCW-LMT	GRY	7
LMT COM	#26 GRN/RED	6
ENC COM	#24 GRN	5
MKR-N	WHT/ORG	4
SIN-N	WHT/BLU	3
COS-N	WHT/YEL	2
KEY	KEY	1
BOTH SHIELDS	BOTH SHIELDS	CASE



25 PIN FEMALE D-STYLE CONNECTOR (ECK00300) JACKSOCKETS (ECK00129)

ADD GOLD JUMPER (EIK00351) (TYP. 4 PLS.)

5.) ALL TOLERANCES ARE +/- .25".

FOR EACH WIRE BUNDLE:

- (a) WRAP WITH ITS FOIL SHIELD TO CONTACT DRAIN WIRE.
- (b) COVER WITH SHRINK-N-SHIELD (ECX01017).

CONNECTOR SHIELDING:

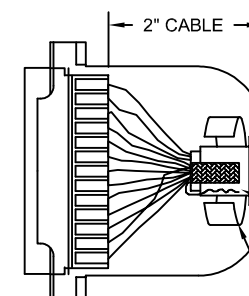
USE 3-DOT GROMMET (AS SHOWN) SUPPLIED WITH BACKSHELL



FOLD BACK DRAIN WIRES AND BOTH SHIELDS, WITH SILVER SIDE FACING OUTWARD

WRAP 4" COPPER FOIL (EIA00281) OVER GROMMET, SHIELD, & DRAIN WIRE

CONNECTOR SHIELDING:



USE 4-DOT GROMMET (AS SHOWN) SUPPLIED WITH BACKSHELL

FOLD BACK DRAIN WIRE AND OUTER SHIELD, WITH SILVER SIDE FACING OUTWARD.

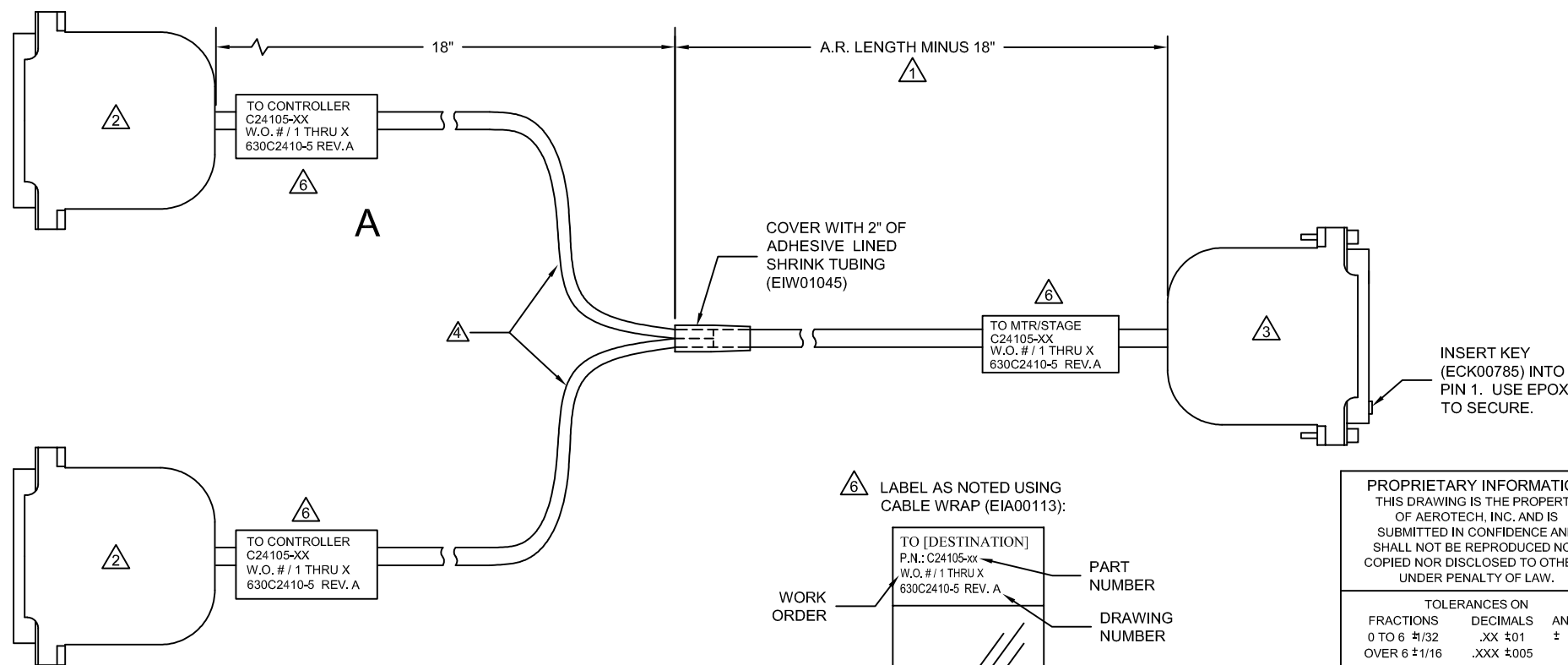
WRAP 4" COPPER FOIL (EIA00281) OVER GROMMET, SHIELD, & DRAIN WIRE

CABLE LENGTH:

CABLE LENGTHS (XX) ARE IN DECIMETERS  
EXAMPLE: FOR C25775-30, 30=30 DECIMETERS (3 METERS).

STARTING CABLE LENGTH SHOULD BE 4 INCHES LONGER THAN TOTAL LENGTH OF CABLE.

NOTES:



PROPRIETARY INFORMATION  
THIS DRAWING IS THE PROPERTY OF AEROTECH, INC. AND IS SUBMITTED IN CONFIDENCE AND SHALL NOT BE REPRODUCED NOR COPIED NOR DISCLOSED TO OTHERS UNDER PENALTY OF LAW.



AEROTECH, INC., 101 Zeta Drive  
Pittsburgh, PA. 15238-2897, USA  
HTTP://www.aerotech.com

TOLERANCES ON		
FRACTIONS	DECIMALS	ANGLES
0 TO 6 #/32	.XX ±01	± 0-30'
OVER 6 ±1/16	.XXX ±005	

RMS FINISH	EXCEPT AS NOTED
------------	-----------------

DRAWN	AF	12/18
CHECKED	ZGK	12/18
APPD.	JFM, NR	12/18

**CABLE: C24105**  
BL MTR + FB-25D 5D-25DJS-5ARMS-MAX96DM

PART CODE	SIZE	REV.
C24105-XX	C	A
SCALE	FILE NAME	SHEET
NTS	630C2410-5SHT1.dwg	1 OF 1