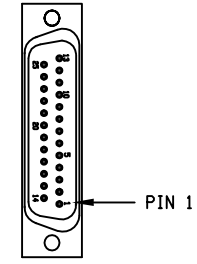


REVISIONS			
REV.	DESCRIPTION	DRAWN	DATE
X	XXXXXX	XXX	XX/XX/XX

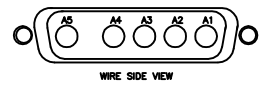
25-PIN D-MALE, ECK00101
BACKSHELL, ECK00656
ADD SCREW LOCKS
WIRE SIDE VIEW



PIN	WIRE	SIGNAL
13	-	-
12	W/BRN	CW/+LMT
11	-	-
10	-	-
9	-	-
8	-	-
7	ORN	MKR
6	W/ORN	MKR-N
5	-	-
4	W/GRN	ID
3	VIO	ENC +5V
2	RED	ENC +5V
1	GRN	THERMISTOR
CASE	SHIELD	SHIELD
14	YEL	COS
15	W/YEL	COS-N
16	-	-
17	BLU	SIN
18	W/BLU	SIN-N
19	-	-
20	GRY	LMT COM
21	WHT	ENC COM
21	BRN	ENC COM
21	BLK	ENC COM
22	-	-
23	-	-
24	W/GRY	CCW/-LMT
25	-	-

5

5 PIN MALE HPD, ECK01236
PINS x5, ECK00660
BACKSHELL, ECK00656
ADD SCREW LOCKS



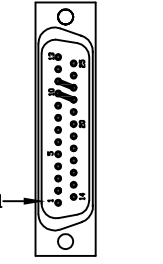
PIN	WIRE	SIGNAL
CASE	SHIELD	SHIELD
A2	#24 GRN	MTR-
A2	#22 GRY	MTR-
A1	#24 VIO	MTR+
A1	#22 PNK	MTR+

INSTALL ALL PINS IN MOTOR CONNECTOR.

SIGNAL	WIRE	PIN
-	-	13
-	-	12
MOTOR+	* #24 PNK	11
MOTOR-	* #24 GRY	10
-	-	9
-	-	8
CCW/-LMT	W/GRY	7
LMT COM	GRY	6
ENC COM	WHT	5
ENC COM	BRN	5
ENC COM	BLK	5
MKR-N	W/ORN	4
SIN-N	W/BLU	3
COS-N	W/YEL	2
KEY	KEY	1
BOTH SHIELDS	BOTH SHIELDS	CASE
COS	YEL	14
SIN	BLU	15
MKR	ORN	16
ENC +5V	VIO	17
ENC +5V	RED	17
ID	W/GRN	18
CW/+LMT	W/BRN	19
THERMISTOR	GRN	20
-	-	21
MOTOR-	* #24 GRN	22
MOTOR+	* #24 VIO	23
-	-	24
-	-	25

* WIRES ARE FROM ECX01279

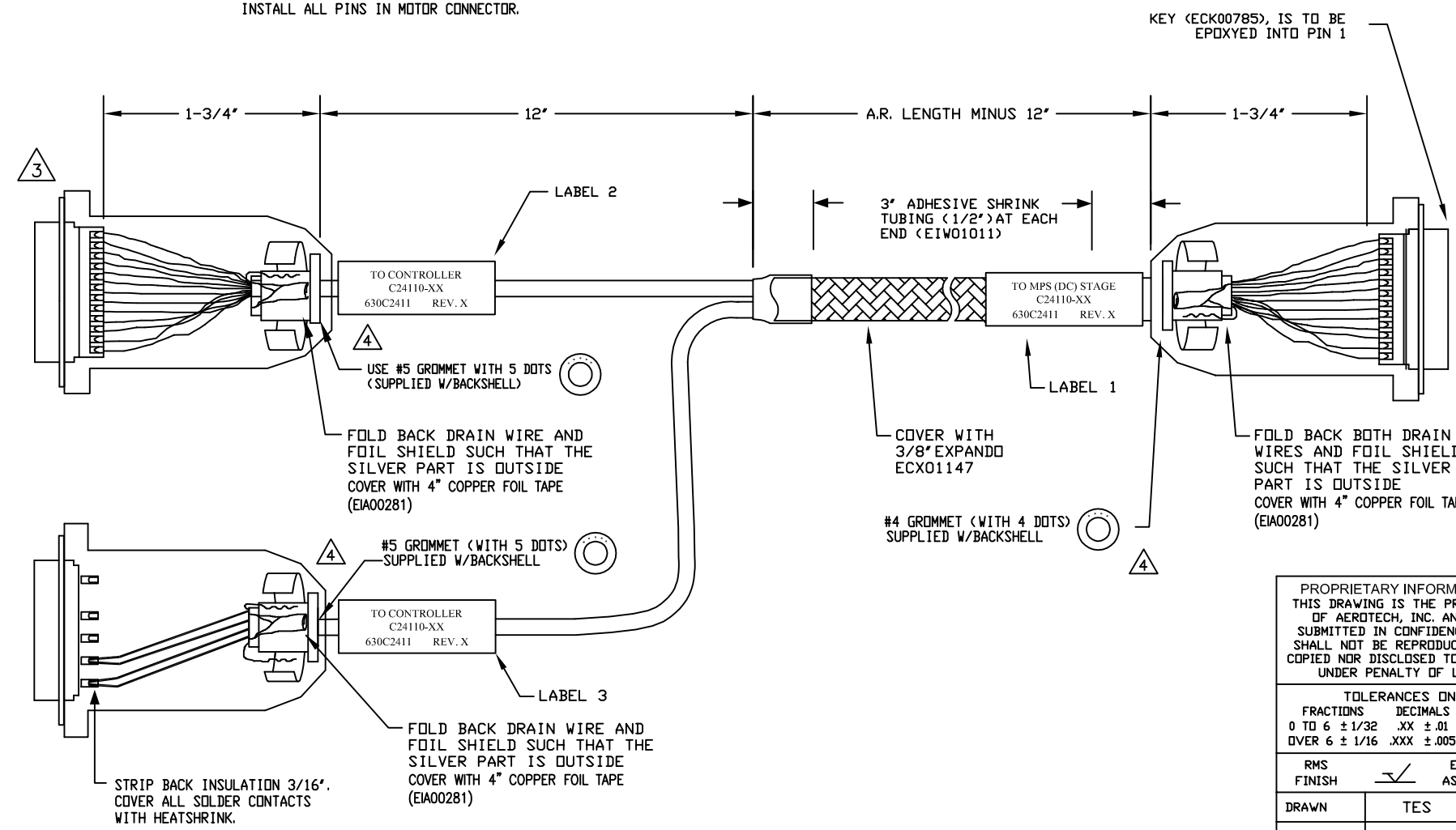
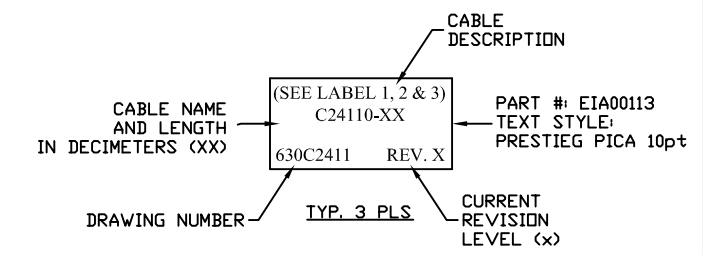
25-PIN D-FEMALE, ECK00300
BACKSHELL, ECK00656
JACKSOCKETS, ECK00129
WIRE SIDE VIEW



ADD GOLD JUMPER
EIK00351, 2 PLS.

6

ADD THREE LABELS



5

SPLICE 3 # 24 WIRES TO 1 #22,
SOLDER AND COVER WITH HEATSHRINK

4

VERIFY GROMMET IS SECURED TIGHTLY
AROUND CABLE. IF NECESSARY BUILD UP
WITH SHRINK TUBING.

3

FOR CRIMP TOOL USE AMP HANDLE ASSY 58074-1
WITH AMP HEAD ASSY 58063-2

1

STARTING CABLE LENGTH SHOULD BE 5 IN
LONGER THAN TOTAL LENGTH OF CABLE. LENGTH
OF CABLE IS DESIGNATED BY THE (XX) IN
CABLE NAME.

PROPRIETARY INFORMATION
THIS DRAWING IS THE PROPERTY
OF AEROTECH, INC. AND IS
SUBMITTED IN CONFIDENCE AND
SHALL NOT BE REPRODUCED NOR
COPIED NOR DISCLOSED TO OTHERS
UNDER PENALTY OF LAW.



AEROTECH, INC. 101 Zeta Drive
Pittsburgh, PA. 15238
(412)963-7470
www.aerotech.com

TOLERANCES ON	FRACTIONS	DECIMALS	ANGLES
0 TO 6	± 1/32	.XX ± .01	± 0-30'
OVER 6	± 1/16	.XXX ± .005	

RMS FINISH ✓ EXCEPT AS NOTED

DRAWN	TES	7/3/13
CHECKED	JFM	7/3/13
APPD.	JFM	7/3/13

MPS SERIES DC STAGE FEEDBACK & MOTOR CABLE DC MTR & FB-25DU 5DU-25DU-MAX110DM			
PART CODE	SIZE	REV.	
C24110-XX	C	-	
630C2411			
SCALE	FILE NAME	SHEET	
NTS	630C241101.Dwg	1 OF 1	