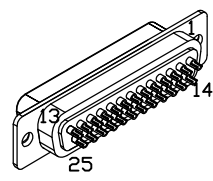


REV.		DESCRIPTION	DRAWN	DATE
A		ADDED ECO 69	JFM	8/28/2017

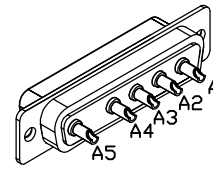
PIN	WIRE	SIGNAL
13	-	-
12	W/BRN	CW+LMT
11	-	-
10	-	-
9	-	-
8	-	-
7	ORN	MKR
6	W/ORN	MKR-N
5	-	-
4	W/GRN	ID
3	VIO	ENC +5V
2	RED	ENC +5V
1	GRN	THERMISTOR
CASE	SHIELD	SHIELD

PIN	WIRE	SIGNAL
14	YEL	COS
15	W/YEL	COS-N
16	-	-
17	BLU	SIN
18	W/BLU	SIN-N
19	-	-
20	GRY	LMT COM
21	WHT	ENC COM
22	BRN	ENC COM
23	BLK	ENC COM
24	W/GRY	CCW-LMT
25	-	-

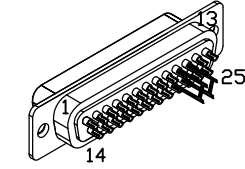
SIGNAL	WIRE	PIN
MOTOR+	#24 PNK	11
MOTOR-	#24 GRY	10
-	-	9
-	-	8
CCW-LMT	W/GRY	7
LMT COM	GRY	6
ENC COM	WHT	5
ENC COM	BRN	5
ENC COM	BLK	5
MKR-N	W/ORN	4
SIN-N	W/BLU	3
COS-N	W/YEL	2
KEY	KEY	1
BOTH SHIELDS	BOTH SHIELDS	CASE



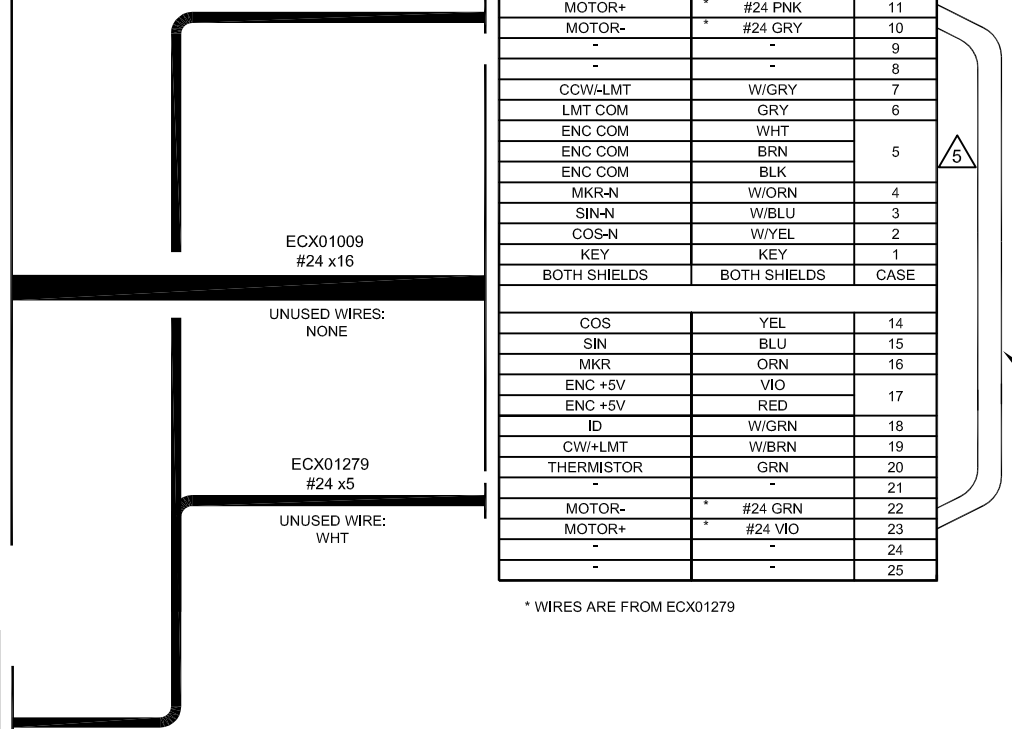
25-PIN D-MALE, ECK00101
BACKSHELL, ECK00656
ADD SCREW LOCKS



5 PIN MALE HPD, ECK01236
PINS x5, ECK00660
BACKSHELL, ECK00656
ADD SCREW LOCKS



25-PIN D-FEMALE, ECK00300
BACKSHELL, ECK00656
JACKSOCKETS, ECK00129

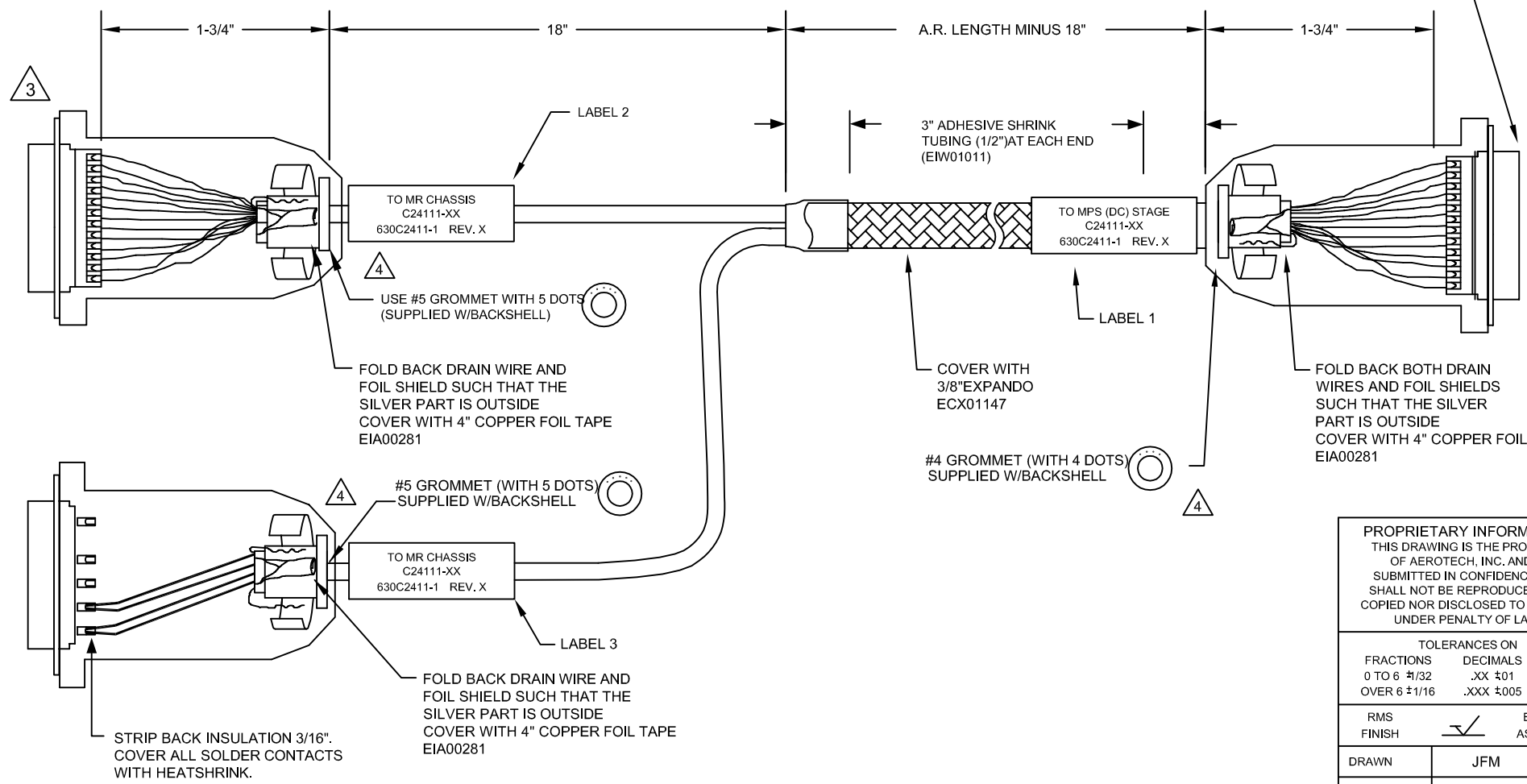
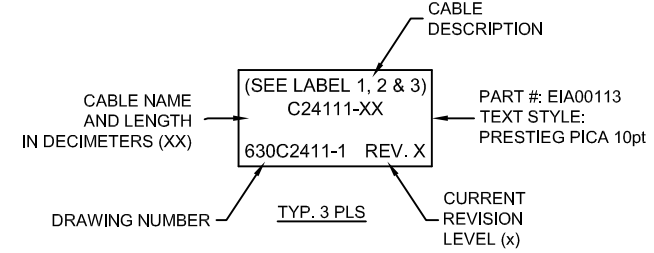


* WIRES ARE FROM ECX01279

INSTALL ALL PINS IN MOTOR CONNECTOR.

5 ADD GOLD JUMPER EIK00351, 2 PLS.

6 ADD THREE LABELS



5 SPLICE 3 # 24 WIRES TO 1 #22, SOLDER AND COVER WITH HEATSHRINK

4 VERIFY GROMMET IS SECURED TIGHTLY AROUND CABLE. IF NECESSARY BUILD UP WITH SHRINK TUBING.

3 FOR CRIMP TOOL USE AMP HANDLE ASSY 58074-1 WITH AMP HEAD ASSY 58063-2

1 STARTING CABLE LENGTH SHOULD BE 5 IN LONGER THAN TOTAL LENGTH OF CABLE. LENGTH OF CABLE IS DESIGNATED BY THE (XX) IN CABLE NAME.

PROPRIETARY INFORMATION THIS DRAWING IS THE PROPERTY OF AEROTECH, INC. AND IS SUBMITTED IN CONFIDENCE AND SHALL NOT BE REPRODUCED NOR COPIED NOR DISCLOSED TO OTHERS UNDER PENALTY OF LAW.			AEROTECH, INC. 101 Zeta Drive Pittsburgh, PA. 15238 (412)963-7470 www.aerotech.com	
TOLERANCES ON FRACTIONS DECIMALS ANGLES 0 TO 6 ±1/32 .XX ±01 ± 0-30' OVER 6 ±1/16 .XXX ±005			MPS SERIES DC STAGE (Npaq MR) FEEDBACK & MOTOR CABLE DC MTR & FB-25D 5D-25D-4ARMS-MAX97DM	
RMS FINISH	EXCEPT AS NOTED		PART CODE	SIZE
DRAWN	JFM	11/19/15	C24111	C
CHECKED	TES	11/19/15	630C2411-1	
APPD.	JFM	11/19/15	SCALE	NTS
FILE NAME			630C2411-1.Dwg	SHEET 1 OF 1