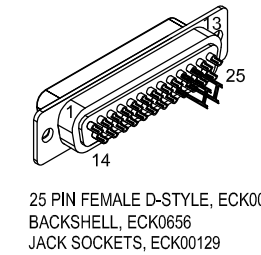
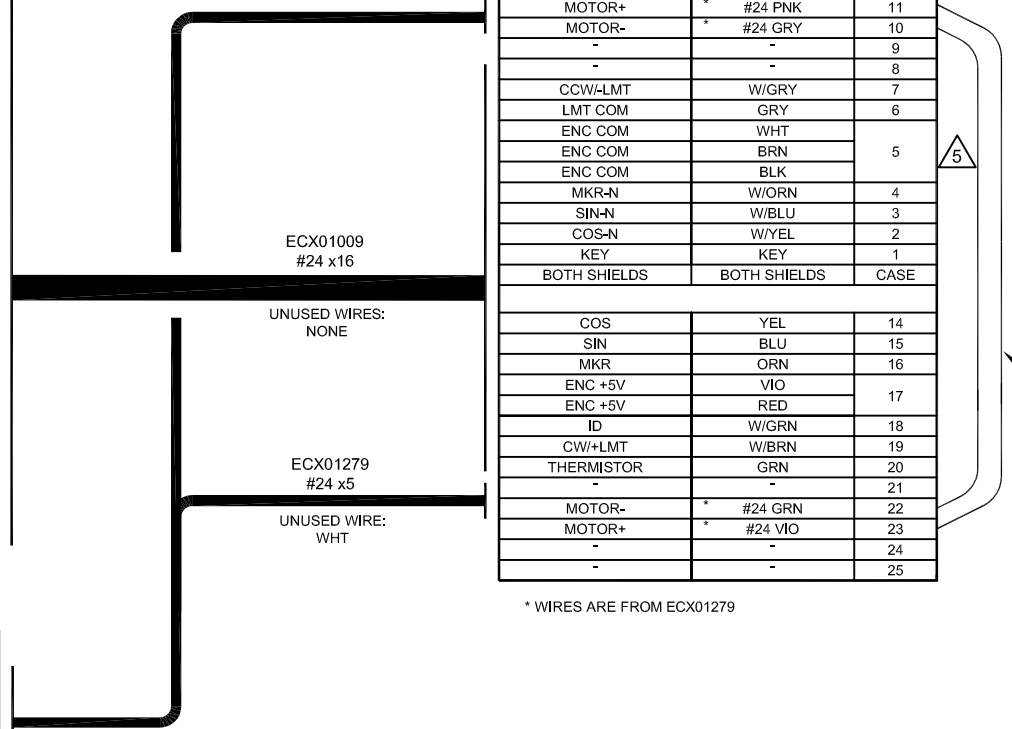


REV.		DESCRIPTION	DRAWN	DATE
A		ADDED ECO 69	JFM	8/28/2017

PIN	WIRE	SIGNAL
13	-	-
12	W/BRN	CW+LMT
11	-	-
10	-	-
9	-	-
8	-	-
7	ORN	MKR
6	W/ORN	MKR-N
5	-	-
4	W/GRN	ID
3	VIO	ENC +5V
2	RED	ENC +5V
1	GRN	THERMISTOR
CASE	SHIELD	SHIELD

PIN	WIRE	SIGNAL
CASE	SHIELD	SHIELD
A2	#24 GRN	MTR-
A1	#24 VIO	MTR+

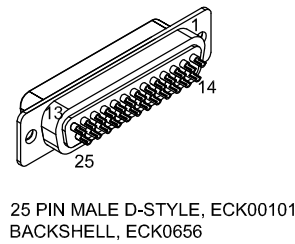
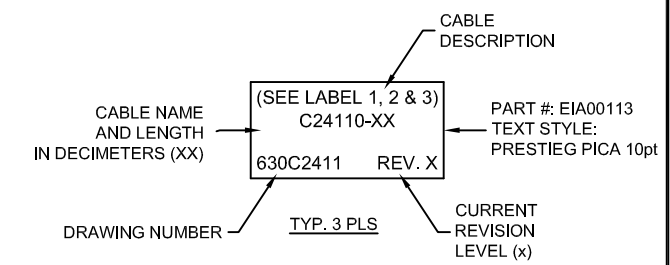
SIGNAL	WIRE	PIN
MOTOR+	#24 PNK	11
MOTOR-	#24 GRY	10
-	-	9
-	-	8
CCW-LMT	W/GRY	7
LMT COM	GRY	6
ENC COM	WHT	5
ENC COM	BRN	5
ENC COM	BLK	5
MKR-N	W/ORN	4
SIN-N	W/BLU	3
COS-N	W/YEL	2
KEY	KEY	1
BOTH SHIELDS	BOTH SHIELDS	CASE



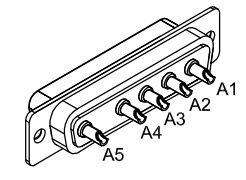
25 PIN FEMALE D-STYLE, ECK00300  
BACKSHELL, ECK0656  
JACK SOCKETS, ECK00129

ADD GOLD JUMPER  
EIK00351, 2 PLS.

6 ADD THREE LABELS

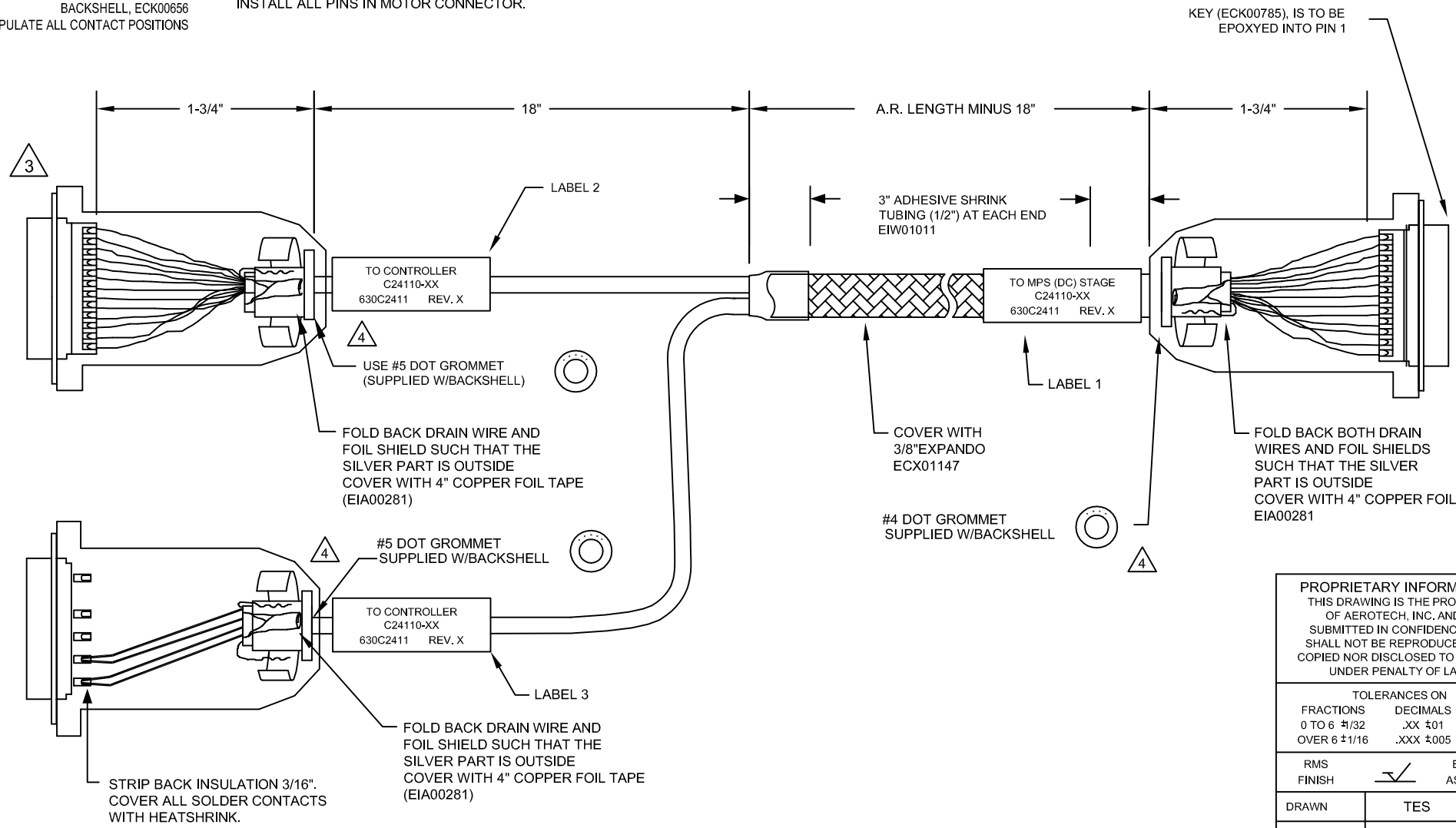


25 PIN MALE D-STYLE, ECK00101  
BACKSHELL, ECK0656



5 PIN MALE HPD, ECK01236  
20 AMP PIN, ECK00660  
BACKSHELL, ECK00656  
POPULATE ALL CONTACT POSITIONS

INSTALL ALL PINS IN MOTOR CONNECTOR.



5 SPLICE 3 # 24 WIRES TO 1 #22, SOLDER AND COVER WITH HEATSHRINK

4 VERIFY GROMMET IS SECURED TIGHTLY AROUND CABLE. IF NECESSARY BUILD UP WITH SHRINK TUBING.

3 FOR CRIMP TOOL USE AMP HANDLE ASSY 58074-1 WITH AMP HEAD ASSY 58063-2

1 STARTING CABLE LENGTH SHOULD BE 5 IN LONGER THAN TOTAL LENGTH OF CABLE. LENGTH OF CABLE IS DESIGNATED BY THE (XX) IN CABLE NAME.

PROPRIETARY INFORMATION  
THIS DRAWING IS THE PROPERTY OF AEROTECH, INC. AND IS SUBMITTED IN CONFIDENCE AND SHALL NOT BE REPRODUCED NOR COPIED NOR DISCLOSED TO OTHERS UNDER PENALTY OF LAW.



AEROTECH, INC. 101 Zeta Drive  
Pittsburgh, PA. 15238  
(412) 963-7470  
www.aerotech.com

FRACTIONS	DECIMALS	ANGLES
0 TO 6 1/32	.XX ±01	± 0-30'
OVER 6 1/16	.XXX ±005	

RMS FINISH  EXCEPT AS NOTED

DRAWN	TES	7/3/13
CHECKED	JFM	7/3/13
APPD.	JFM	7/3/13

MPS SERIES DC STAGE  
FEEDBACK & MOTOR CABLE  
DC MTR & FB-25D 5D-25D-4ARMS-MAX97DM

PART CODE	SIZE	REV.
C24110	C	A
630C2411		
SCALE	FILE NAME	SHEET
NTS	630C2411.Dwg	1 OF 1