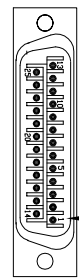


REV. DESCRIPTION		REVISIONS	DRAWN	DATE
X	XXXXXX		XXX	XX/XX/XX

25-PIN D, MALE, ECK00786
BACKSHELL, ECK00656
ADD SCREWLOCKS

WIRE SIDE VIEW



PIN 1

PIN	WIRE	SIGNAL
13	-	-
12	YEL	CW/+LMT
11	-	-
10	-	-
9	-	-
8	-	-
7	-	-
6	-	-
5	-	-
4	W/ORN	ID
3	VIO	ENC +5V
2	W/RED	THERMISTOR
1	-	-
CASE	SHIELD/DRAIN	SHIELD
14	-	-
15	-	-
16	-	-
17	-	-
18	-	-
19	-	-
20	W/GRN	LMT COM
21	BRN	ENC COM
22	-	-
23	-	-
24	W/GRY	CCW/-LMT
25	-	-

ECX00428
#22 x10

UNUSED WIRES
LT BRN,
W/YEL
W/BRN

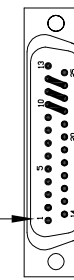
ECX01217
#20 x4

UNUSED WIRE:
GRN/YEL

SIGNAL	WIRE	PIN
-	-	13
øB	-	12
øA	-	11
øA, øB RETURN	-	10
-	-	9
-	-	8
CCW/-LMT	W/GRY	7
LMT COM	W/GRN	6
ENC COM	BRN	5
-	-	4
-	-	3
KEY	KEY	2
BOTH SHIELDS	SHIELD/DRAIN	1
-	-	14
-	-	15
-	-	16
ENC +5V	VIO	17
ID	W/ORN	18
CW/+LMT	YEL	19
THERMISTOR	W/RED	20
-	-	21
øA, øB RETURN	* WHT	22
øA	* BLK	23
øB	* RED	24
-	-	25

* WIRES ARE FROM ECX01217

25-PIN D, FEMALE, ECK00300
BACKSHELL, ECK00656
JACKSOCKETS, ECK00129
WIRE SIDE VIEW

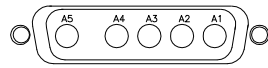


PIN 1

ADD GOLD JUMPER
EIK00351, 3 PLS.

ADD GOLD JUMPER
EIK00351, 3 PLS.

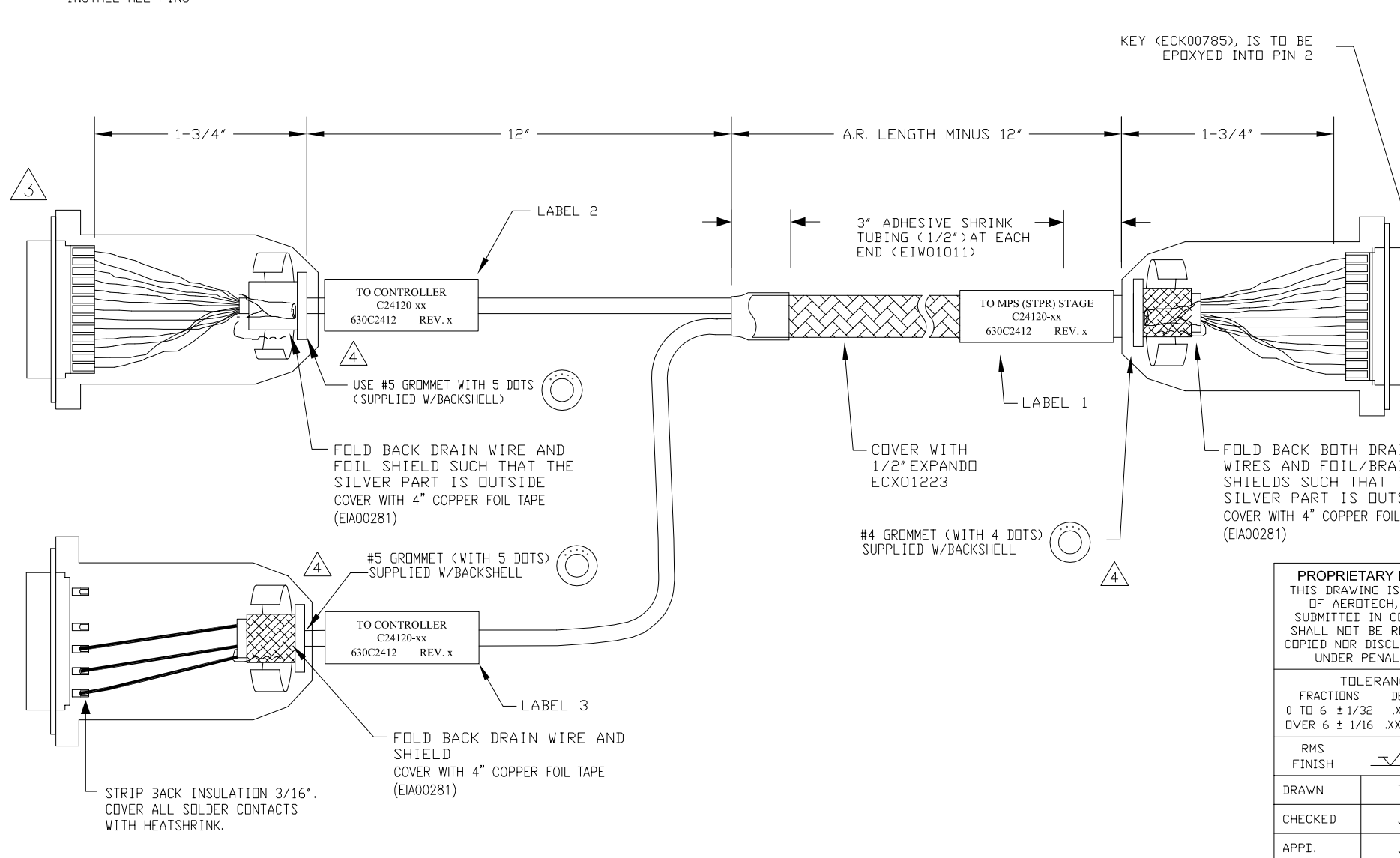
5 PIN MALE HPD, ECK01236
PINS (5), ECK00660
BACKSHELL, ECK00656
ADD SCREWLOCKS



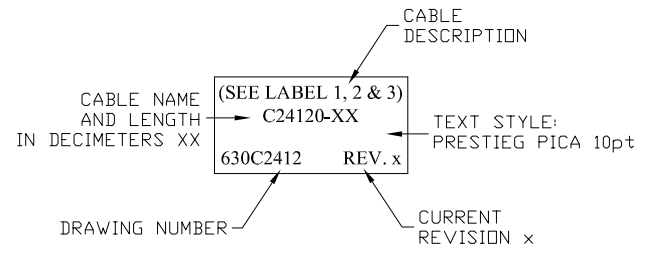
WIRE SIDE VIEW

INSTALL ALL PINS

PIN	WIRE	SIGNAL
CASE	SHIELD/DRAIN	SHIELD
A1	BLK	øA
A2	RED	øB
A3	WHT	øA, øB RETURN



- 5 ADD THREE LABELS, EIA00113
- 4 VERIFY GROMMET IS SECURED TIGHTLY AROUND CABLE. IF NECESSARY BUILD UP WITH SHRINK TUBING.
- 3 FOR CRIMP TOOL USE AMP HANDLE ASSY 58074-1 WITH AMP HEAD ASSY 58063-2
- 1 STARTING CABLE LENGTH SHOULD BE 5 IN LONGER THAN TOTAL LENGTH OF CABLE. LENGTH OF CABLE IS DESIGNATED BY THE <XX> IN CABLE NAME.



PROPRIETARY INFORMATION THIS DRAWING IS THE PROPERTY OF AEROTECH, INC. AND IS SUBMITTED IN CONFIDENCE AND SHALL NOT BE REPRODUCED NOR COPIED NOR DISCLOSED TO OTHERS UNDER PENALTY OF LAW.			AEROTECH, INC. 101 Zeta Drive Pittsburgh, PA. 15238 (412)963-7470 www.aerotech.com	
TOLERANCES ON FRACTIONS DECIMALS ANGLES 0 TO 6 ± 1/32 .XX ± .01 ± 0-30' OVER 6 ± 1/16 .XXX ± .005			MPS SERIES STEPPER STAGE TO NPAQ FEEDBACK & MOTOR CABLE SM & FB-25DU 5DU-25DU-MAX110DM	
RMS FINISH	✓	EXCEPT AS NOTED	PART CODE	SIZE
DRAWN	TES	7/3/13	C24120-XX	C
CHECKED	JFM	7/3/13	630C2412	
APPD.	JFM	7/3/13	SCALE NTS	FILE NAME 630C241201.Dwg
			SHEET	1 OF 1