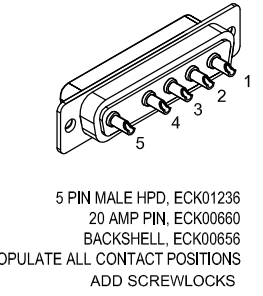
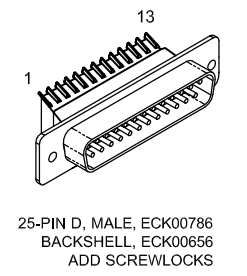


REVISIONS			
REV.	DESCRIPTION	DRAWN	DATE
A	ADDED ECO 69	JFM	8/25/2017

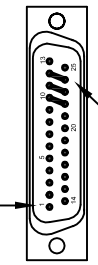


PIN	WIRE	SIGNAL
13	-	-
12	YEL	CW/HLMT
11	-	-
10	-	-
9	-	-
8	-	-
7	-	-
6	-	-
5	-	-
4	W/ORN	ID
3	VIO	ENC +5V
2	W/RED	THERMISTOR
1	-	-
CASE	SHIELD/DRAIN	SHIELD

PIN	WIRE	SIGNAL
CASE	SHIELD/DRAIN	SHIELD
1	BLK	ØA
2	RED	ØB
3	WHT	ØA, ØB RETURN

SIGNAL	WIRE	PIN
-	-	13
ØB	-	12
ØA	-	11
ØA, ØB RETURN	-	10
-	-	9
-	-	8
CCW/LMT	W/GRY	7
LMT COM	W/GRN	6
ENC COM	BRN	5
-	-	4
-	-	3
-	-	2
KEY	KEY	1
BOTH SHIELDS	SHIELD/DRAIN	CASE

25-PIN D, FEMALE, ECK00300  
BACKSHELL, ECK00656  
JACKSOCKETS, ECK00129  
WIRE SIDE VIEW



ADD GOLD JUMPER  
EIK00351, 3 PLS.

ADD GOLD JUMPER  
EIK00351, 3 PLS.

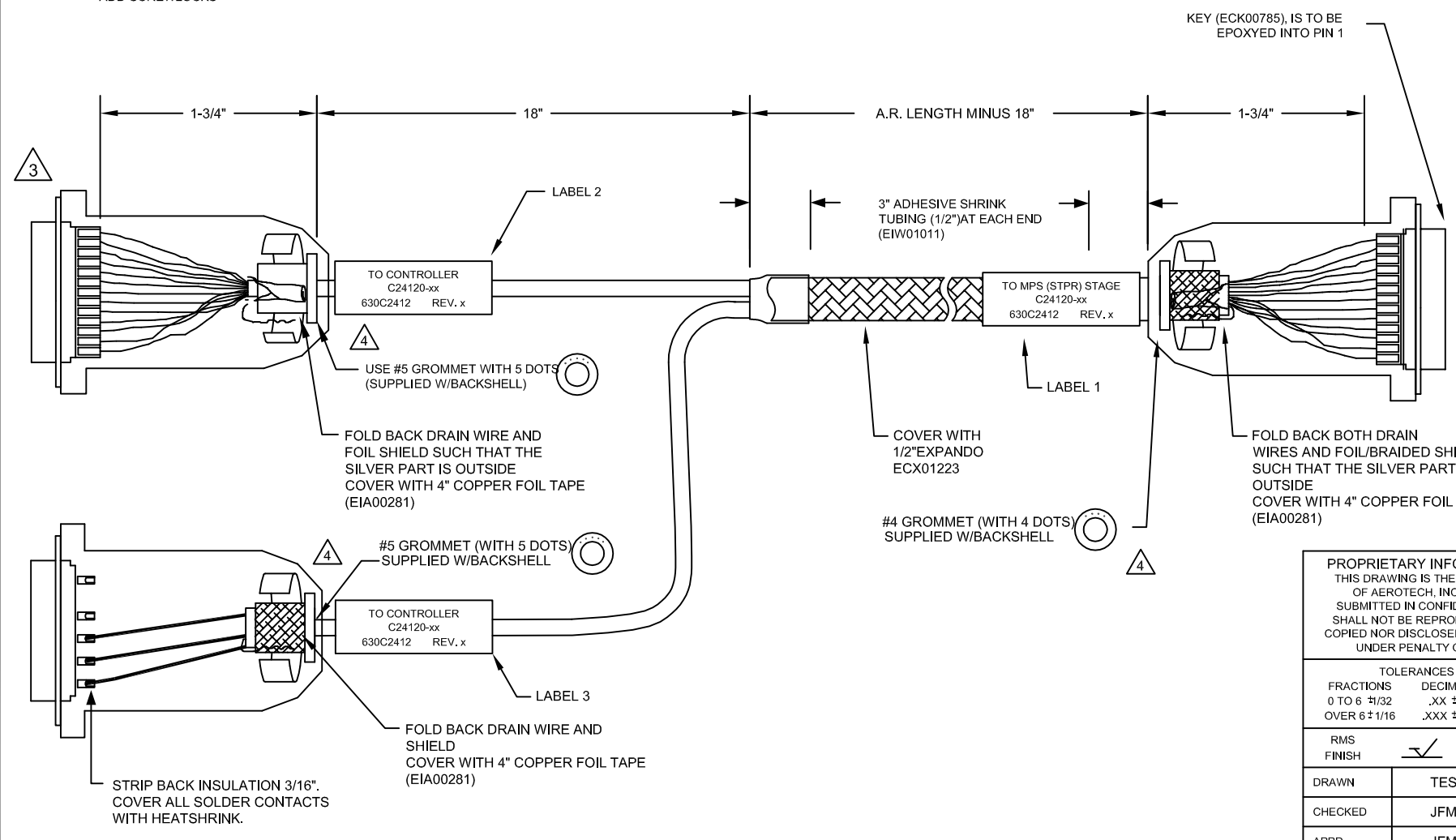
ECX00428  
#22 x10

UNUSED WIRES  
LT BRN,  
W/YEL  
W/BRN

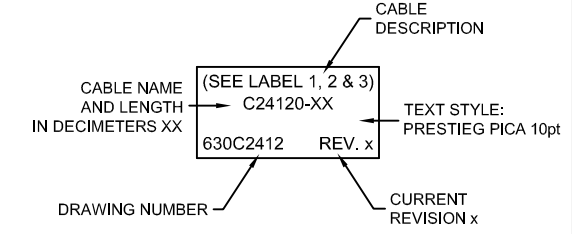
ECX01217  
#20 x4

UNUSED WIRE:  
GRN/YEL

\* WIRES ARE FROM ECX01217



- 5 ADD THREE LABELS, EIA00113
- 4 VERIFY GROMMET IS SECURED TIGHTLY AROUND CABLE. IF NECESSARY BUILD UP WITH SHRINK TUBING.
- 3 FOR CRIMP TOOL USE AMP HANDLE ASSY 58074-1 WITH AMP HEAD ASSY 58063-2
- 1 STARTING CABLE LENGTH SHOULD BE 5 IN LONGER THAN TOTAL LENGTH OF CABLE. LENGTH OF CABLE IS DESIGNATED BY THE (XX) IN CABLE NAME.



PROPRIETARY INFORMATION  
THIS DRAWING IS THE PROPERTY  
OF AEROTECH, INC. AND IS  
SUBMITTED IN CONFIDENCE AND  
SHALL NOT BE REPRODUCED NOR  
COPIED NOR DISCLOSED TO OTHERS  
UNDER PENALTY OF LAW.



AEROTECH, INC. 101 Zeta Drive  
Pittsburgh, PA. 15238  
(412)963-7470  
www.aerotech.com

TOLERANCES ON		
FRACTIONS	DECIMALS	ANGLES
0 TO 6 ±1/32	.XX ±.01	± 0-30'
OVER 6 ±1/16	.XXX ±.005	

RMS FINISH  EXCEPT AS NOTED

DRAWN	TES	7/3/13
CHECKED	JFM	7/3/13
APPD.	JFM	7/3/13

MPS SERIES STEPPER STAGE TO NPAQ FEEDBACK & MOTOR CABLE SM & FB-5D 25D-25D-3.5ARMS-MAX110DM			
PART CODE	SIZE	REV.	
C24120	C	630C2412	A
SCALE	NTS	FILE NAME	SHEET
		630C2412.Dwg	1 OF 1