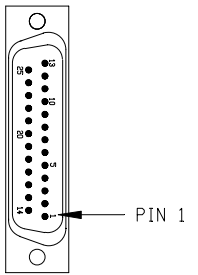


REVISIONS			
REV.	DESCRIPTION	DRAWN	DATE
-	-	-	-

25-PIN D-MALE, ECK00101
BACKSHELL, ECK00656
ADD SCREW LOCKS
WIRE SIDE VIEW



PIN	WIRE	SIGNAL
13	-	-
12	WHT/BRN	CW/+LMT
11	-	-
10	-	-
9	-	-
8	-	-
7	ORN	MKR
6	WHT/ORN	MKR-N
5	-	-
4	WHT/GRN	ID
3	VIO	ENC +5V
2	RED	ENC +5V
1	GRN	THERMISTOR
CASE	SHIELD/DRAIN	SHIELD
14	YEL	COS
15	WHT/YEL	COS-N
16	-	-
17	BLU	SIN
18	WHT/BLU	SIN-N
19	-	-
20	GRY	LMT COM
21	WHT	ENC COM
22	BRN	ENC COM
23	BLK	ENC COM
24	WHT/GRY	CCW/-LMT
25	-	-

ECX01009
16 COND., #24

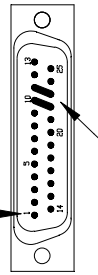
UNUSED WIRES:
NONE

ECX01217
4 COND., #20

UNUSED WIRE:
RED

SIGNAL	WIRE	PIN
-	-	13
-	-	12
ØA	JMP TO PIN 23	11
ØA RETURN	JMP TO PIN 22	10
-	-	9
-	-	8
CCW/-LMT	WHT/GRY	7
LMT COM	GRY	6
ENC COM	WHT	5
ENC COM	BRN	5
ENC COM	BLK	5
MKR-N	WHT/ORN	4
SIN-N	WHT/BLU	3
COS-N	WHT/YEL	2
KEY	KEY	1
BOTH SHIELDS	BOTH SHIELDS	CASE
COS	YEL	14
SIN	BLU	15
MKR	ORN	16
ENC +5V	VIO	17
ENC +5V	RED	17
ID	WHT/GRN	18
CW/+LMT	WHT/BRN	19
THERMISTOR	GRN	20
-	-	21
ØA RETURN	#20-WHT	22
ØA	#20-BLK	23
-	-	24
-	-	25
N.C. AT THIS END	#20 GRN/YEL	N.C.

25-PIN D, FEMALE, ECK00300
BACKSHELL, ECK00656
JACKSOCKETS, ECK00129
WIRE SIDE VIEW



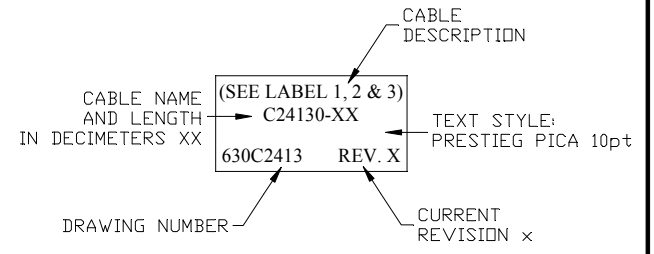
ADD GOLD JUMPER
EIK00351, 2 PLS.

ADD GOLD JUMPER
EIK00351, 2 PLS.

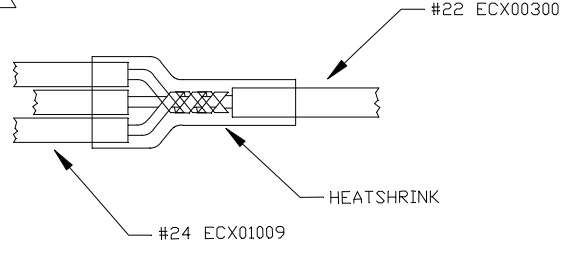
LABEL	WIRE	SIGNAL
G	#20 GRN/YEL	SHIELD/DRAIN
C	#20 WHT	ØC
A	#20 BLK	ØA

FERRULE, QTY. 3
EIK01001

6 ADD THREE CABLE LABELS, EIA00113



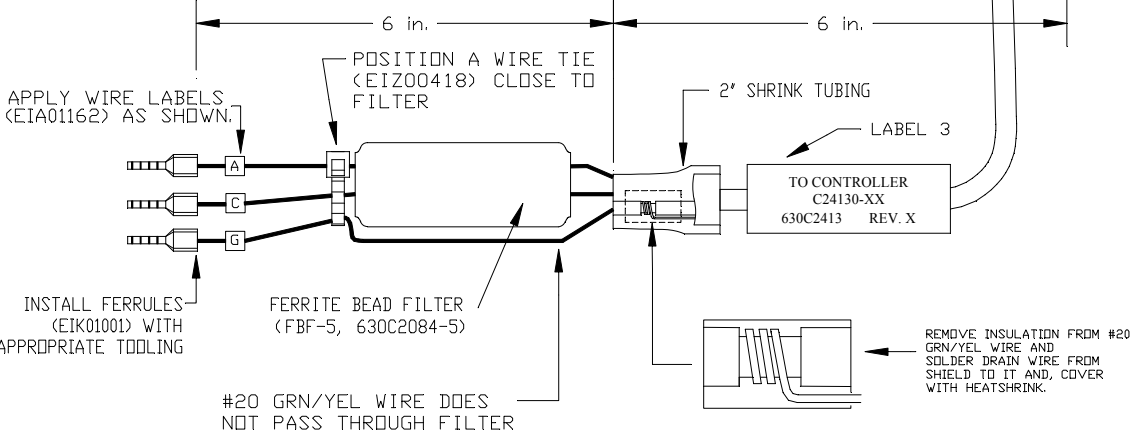
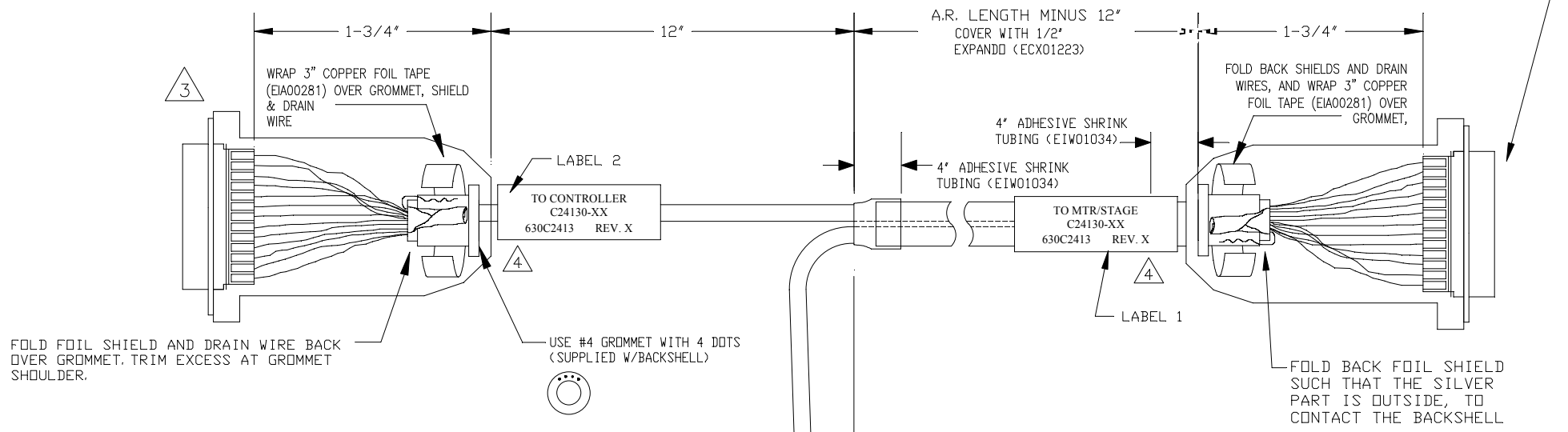
5 SPLICE 3 # 24 WIRES TO 1 #22,
SOLDER AND COVER WITH HEATSHRINK



4 VERIFY GROMMET IS SECURED TIGHTLY AROUND
CABLE. IF NECESSARY BUILD UP WITH
SHRINK TUBING.

3 FOR CRIMP TOOL USE AMP HANDLE ASSY 58074-1
WITH AMP HEAD ASSY 58063-2

1 STARTING CABLE LENGTH SHOULD BE 5 IN
LONGER THAN TOTAL LENGTH OF CABLE. LENGTH
OF CABLE IS DESIGNATED BY THE (XX) IN
CABLE NAME.



PROPRIETARY INFORMATION
THIS DRAWING IS THE PROPERTY
OF AEROTECH, INC. AND IS
SUBMITTED IN CONFIDENCE AND
SHALL NOT BE REPRODUCED NOR
COPIED NOR DISCLOSED TO OTHERS
UNDER PENALTY OF LAW.

AEROTECH®
AEROTECH, INC. 101 Zeta Drive
Pittsburgh, PA. 15238
(412)963-7470
www.aerotech.com

TOLERANCES ON		
FRACTIONS	DECIMALS	ANGLES
0 TO 6 ± 1/32	.XX ± .01	± 0-30'
OVER 6 ± 1/16	.XXX ± .005	

RMS FINISH	EXCEPT AS NOTED
TES	7/9/13
JFM	7/9/13
JFM	7/9/13

**MPS SERIES DC STAGE TO Ndrive
FEEDBACK & MOTOR CABLE
DC MTR & FB-25DU FLB-25DU-MAX110DM**

PART CODE	SIZE	REV.
C24130-XX	C	-
630C2413		
SCALE NTS	FILE NAME	SHEET
	630C241301.Dwg	1 OF 1