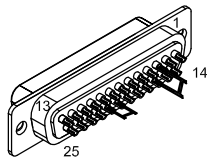


REVISIONS			
REV.	DESCRIPTION	DRAWN	DATE
-	-	-	-

25-PIN D-MALE, ECK00101
BACKSHELL, ECK00656
ADD SCREW LOCKS



ADD GOLD JUMPER
EIK00351, 2 PLS.

FERRULE, QTY. 3
EIK01084

PIN	WIRE	SIGNAL
13	-	-
12	WHT/BRN	CW/+LMT
11	-	-
10	-	-
9	-	-
8	-	-
7	ORN	MKR
6	WHT/ORN	MKR-N
5	-	-
4	WHT/GRN	ID
3	#24 RED	ENC +5V
2	GRN	THERMISTOR
1	-	-
CASE	SHIELD	SHIELD
14	YEL	COS
15	WHT/YEL	COS-N
16	#24 VIO	ENC +5V
17	BLU	SIN
18	WHT/BLU	SIN-N
19	-	-
20	#24 GRY	LMT COM
21	WHT	ENC COM
	BRN	
	#24 BLK	
22	-	-
23	-	-
24	WHT/GRY	CCW/-LMT
25	-	-

LABEL	WIRE	SIGNAL
G	#22 GRN/YEL	SHIELD / FRM GND
C	#22 WHT	ØC
A	#22 BLK	ØA

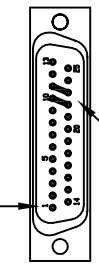
ECX01126
#24 x4, #26 x12
#26 AWG, UNLESS NOTED

UNUSED WIRES:
NONE

ECX01124
4 COND, #22
UNUSED WIRE:
RED

SIGNAL	WIRE	PIN
-	-	13
-	-	12
ØA	JMP TO PIN 23	11
ØA RETURN	JMP TO PIN 22	10
-	-	9
-	-	8
CCW/-LMT	WHT/GRY	7
ENC COM	#24 GRY	6
ENC COM	WHT	5
	BRN	
ENC COM	#24 BLK	4
MKR-N	WHT/ORN	3
SIN-N	WHT/BLU	3
COS-N	WHT/YEL	2
KEY	KEY	1
FRM GND & SHIELDS	BOTH SHIELDS	CASE
	#22 GRN/YEL	
COS	YEL	14
SIN	BLU	15
MKR	ORN	16
ENC +5V	#24 VIO	17
ID	WHT/GRN	18
CW/+LMT	WHT/BRN	19
THERMISTOR	GRN	20
ØA RETURN	#22 WHT	21
ØA	#22 BLK	22
-	-	23
-	-	24
-	-	25

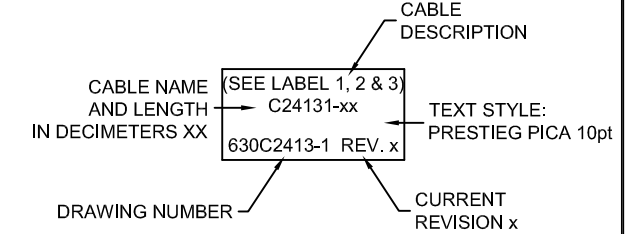
25-PIN D, FEMALE, ECK00300
BACKSHELL, ECK00656
JACKSOCKETS, ECK00129



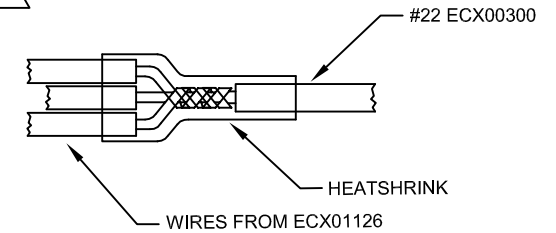
ADD GOLD JUMPER
EIK00351, 2 PLS.

ADD GOLD JUMPER
EIK00351, 2 PLS.

6 ADD THREE EIA00113 LABELS

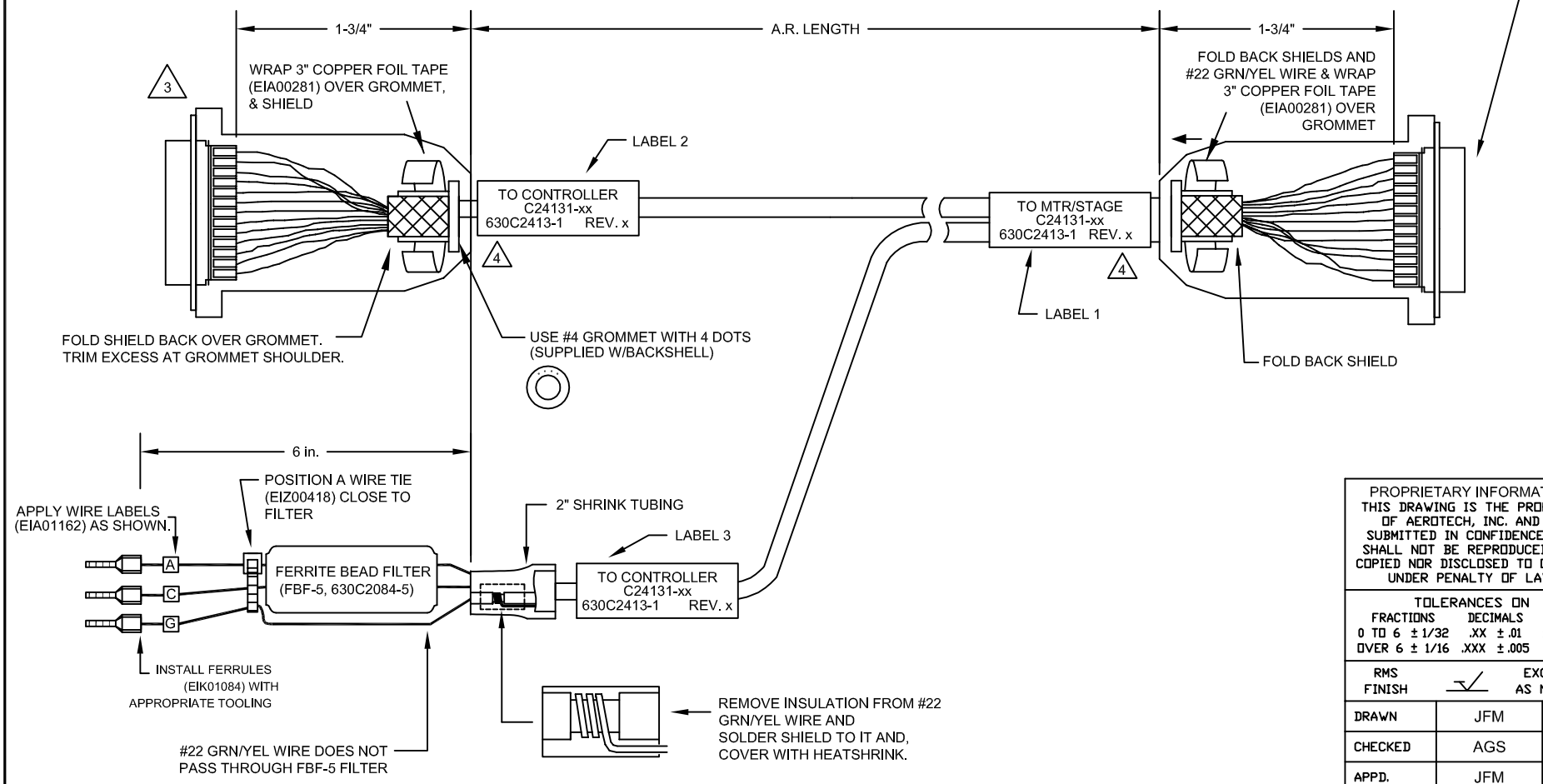


5 SPLICE WIRES TO 1 #22, SOLDER AND COVER WITH HEATSHRINK



4 VERIFY GROMMET IS SECURED TIGHTLY AROUND CABLE. IF NECESSARY BUILD UP WITH SHRINK TUBING.

1 STARTING CABLE LENGTH SHOULD BE 5 IN LONGER THAN TOTAL LENGTH OF CABLE. LENGTH OF CABLE IS DESIGNATED BY THE (XX) IN CABLE NAME.



PROPRIETARY INFORMATION
THIS DRAWING IS THE PROPERTY
OF AEROTECH, INC. AND IS
SUBMITTED IN CONFIDENCE AND
SHALL NOT BE REPRODUCED NOR
COPIED NOR DISCLOSED TO OTHERS
UNDER PENALTY OF LAW.

AEROTECH
AEROTECH, INC. 101 Zeta Drive
Pittsburgh, PA. 15238
(412)963-7470
www.aerotech.com

TOLERANCES ON		
FRACTIONS	DECIMALS	ANGLES
0 TO 6 ± 1/32	.XX ± .01	± 0-30'
OVER 6 ± 1/16	.XXX ± .005	

RMS FINISH	EXCEPT AS NOTED
DRAWN	JFM 12/27/16
CHECKED	AGS 12/27/16
APPD.	JFM 12/27/16

MPS SERIES DC STAGE TO Ndrive FEEDBACK & MOTOR CABLE DC MTR & FB-25DU FLB-25DU-HF65-5ARMS-MAX175DM			
PART CODE	SIZE	630C2413-1	REV. -
C24131-XX	C		
SCALE	NTS	FILE NAME	630C2413-101.Dwg
SHEET	1 OF 1		