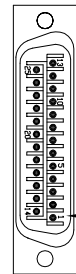


REV. DESCRIPTION		REVISIONS	DRAWN	DATE
A	ADDED ECN 16295		JFM	12/22/2014

25-PIN D, MALE, ECK00786
BACKSHELL, ECK00656
ADD SCREWLOCKS

WIRE SIDE VIEW



PIN 1

PIN	WIRE	SIGNAL
13	-	-
12	WHT/BRN	CW/+LMT
11	-	-
10	-	-
9	-	-
8	-	-
7	ORN	MRK
6	WHT/ORN	MKR-N
5	-	-
4	WHT/GRN	ID
3	WHT	ENC +5V
3	VIO	
3	BRN	
2	RED	THERMISTOR
1	-	-
CASE	SHIELD/DRAIN	SHIELD
14	YEL	COS
15	WHT/YEL	COS-N
16	-	-
17	BLU	SIN
18	WHT/BLU	SIN-N
19	-	-
20	GRY	LMT COM
21	BLK	ENC COM
21	GRN	
22	-	-
23	-	-
24	WHT/GRY	CCW/-LMT
25	-	-

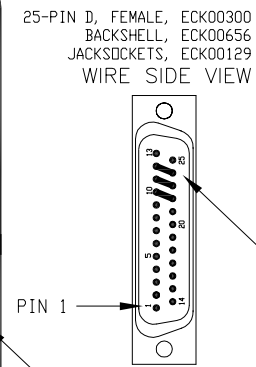
ECX01009
16 COND., #24

UNUSED WIRES:
None

ECX01217
4 COND., #20

SIGNAL	WIRE	PIN
-	-	13
øB	JMP TO PIN 24	12
øA	JMP TO PIN 23	11
øA, øB RETURN	JMP TO PIN 22	10
-	-	9
-	-	8
CCW/-LMT	WHT/GRY	7
LMT COM	GRY	6
ENC COM	BLK	5
	GRN	
MRK-N	WHT/ORN	4
SIN-N	WHT/BLU	3
COS-N	WHT/YEL	2
KEY	KEY	1
BOTH SHIELDS/FRAME	* #20 GRN/YEL	CASE
COS	YEL	14
SIN	BLU	15
MRK	ORN	16
ENC +5V	VIO	17
	WHT	
ID	BRN	18
CW/+LMT	WHT/GRN	19
THERMISTOR	WHT/BRN	20
	RED	21
-	-	22
øA, øB RETURN	* #20 WHT	23
øA	* #20 BLK	24
øB	* #20 RED	25
-	-	-

* DENOTES FROM ECX01217 CABLE



PIN 1

ADD GOLD JUMPER
EIK00351, 3 PLS.

25-PIN D, FEMALE, ECK00300
BACKSHELL, ECK00656
JACKSOCKETS, ECK00129
WIRE SIDE VIEW

ADD GOLD JUMPER
EIK00351, 3 PLS.



FERRULE, QTY. 4
EIK01001

LABEL	WIRE	SIGNAL
G	#20 GRN/YEL	FRAME
C	#20 WHT	øA, øB RETURN
B	#20 RED	øB
A	#20 BLK	øA

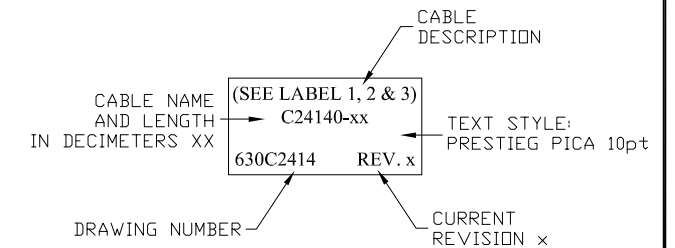


MULTIPLE WIRES TO A PIN

SOLDER SPLICE/HEATSHRINK. USE #24 WIRE.
VIO FOR 5V PINS, AND GRN FOR COMMON PINS



ADD THREE CABLE LABELS, EIA00113



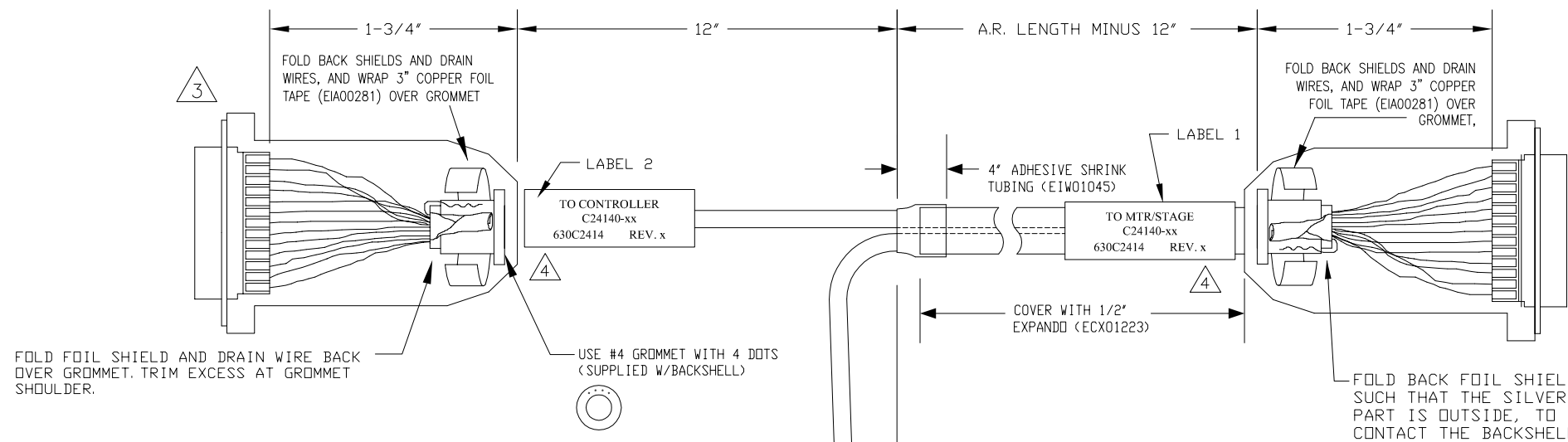
VERIFY GROMMET IS SECURED TIGHTLY AROUND
CABLE. IF NECESSARY BUILD UP WITH
SHRINK TUBING.



FOR CRIMP TOOL USE AMP HANDLE ASSY 58074-1
WITH AMP HEAD ASSY 58063-2



STARTING CABLE LENGTH SHOULD BE 5 IN
LONGER THAN TOTAL LENGTH OF CABLE. LENGTH
OF CABLE IS DESIGNATED BY THE (XX) IN
CABLE NAME.



FOLD FOIL SHIELD AND DRAIN WIRE BACK
OVER GROMMET. TRIM EXCESS AT GROMMET
SHOULDER.

USE #4 GROMMET WITH 4 DOTS
(SUPPLIED W/BACKSHELL)

FOLD BACK FOIL SHIELD
SUCH THAT THE SILVER
PART IS OUTSIDE, TO
CONTACT THE BACKSHELL

APPLY WIRE LABELS
(EIA01162) AS SHOWN.

POSITION A WIRE TIE
(EIZ00418) CLOSE TO
FILTER

INSTALL FERRULES
(EIK01001) WITH
APPROPRIATE TOOLING

FERRITE BEAD FILTER
(FBE-4, 630C2084-4)

#20 GRN/YEL WIRE DOES
NOT PASS THROUGH FILTER

REMOVE INSULATION FROM #20
GRN/YEL WIRE AND
SOLDER DRAIN WIRE FROM
SHIELD TO IT AND, COVER
WITH HEATSHRINK.

PROPRIETARY INFORMATION
THIS DRAWING IS THE PROPERTY
OF AEROTECH, INC. AND IS
SUBMITTED IN CONFIDENCE AND
SHALL NOT BE REPRODUCED NOR
COPIED NOR DISCLOSED TO OTHERS
UNDER PENALTY OF LAW.



AEROTECH, INC. 101 Zeta Drive
Pittsburgh, PA. 15238
(412)963-7470
www.aerotech.com

TOLERANCES ON
FRACTIONS DECIMALS ANGLES
0 TO 6 ± 1/32 .XX ± .01 ± 0-30'
OVER 6 ± 1/16 .XXX ± .005

RMS FINISH EXCEPT AS NOTED

DRAWN	TES	7/9/13
CHECKED	JFM	7/9/13
APPD.	JFM	7/9/13

MPS SERIES STEPPER STAGE TO Ndrive FEEDBACK & MOTOR CABLE		SM MTR & FB-25DU FLB-25DU-MAX110DM	
PART CODE	SIZE	REV.	
C24140-XX	C	A	
SCALE NTS		FILE NAME	SHEET
		630C2414A1.Dwg	1 OF 1