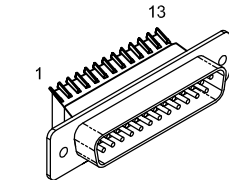


REVISIONS			
REV.	DESCRIPTION	DRAWN	DATE
A	ADDED ECN 16295	JFM	12/22/2014

PIN	WIRE	SIGNAL
13	-	-
12	WHT/BRN	CW/+LMT
11	-	-
10	-	-
9	-	-
8	-	-
7	ORN	MRK
6	WHT/ORN	MKR-N
5	-	-
4	WHT/GRN	ID
3	WHT	ENC +5V
	VIO	
	BRN	
2	RED	THERMISTOR
1	-	-
CASE	SHIELD/DRAIN	SHIELD
14	YEL	COS
15	WHT/YEL	COS-N
16	-	-
17	BLU	SIN
18	WHT/BLU	SIN-N
19	-	-
20	GRY	LMT COM
21	BLK	ENC COM
	GRN	
22	-	-
23	-	-
24	WHT/GRY	CCW-LMT
25	-	-

SIGNAL	WIRE	PIN
-	-	13
ØB	JMP TO PIN 24	12
ØA	JMP TO PIN 23	11
ØA, ØB RETURN	JMP TO PIN 22	10
-	-	9
-	-	8
CCW-LMT	WHT/GRY	7
LMT COM	GRY	6
ENC COM	BLK	5
MRK-N	WHT/ORN	4
SIN-N	WHT/BLU	3
COS-N	WHT/YEL	2
KEY	KEY	1
BOTH SHIELDS/FRAME	* #20 GRN/YEL	CASE
COS	YEL	14
SIN	BLU	15
MRK	ORN	16
ENC +5V	WHT	17
ID	BRN	18
CW/+LMT	WHT/BRN	19
THERMISTOR	RED	20
-	-	21
ØA, ØB RETURN	* #20 WHT	22
ØA	* #20 BLK	23
ØB	* #20 RED	24
-	-	25

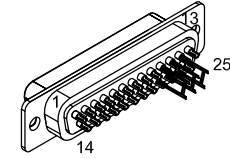
LABEL	WIRE	SIGNAL
G	#20 GRN/YEL	FRAME
C	#20 WHT	ØA, ØB RETURN
B	#20 RED	ØB
A	#20 BLK	ØA



MALE 25 PIN D-STYLE, ECK00786
BACKSHELL, ECK00656



FERRULE, QTY. 4
EIK01001



25 PIN FEMALE D-STYLE, ECK00300
BACKSHELL, ECK0656
JACK SOCKETS, ECK00129

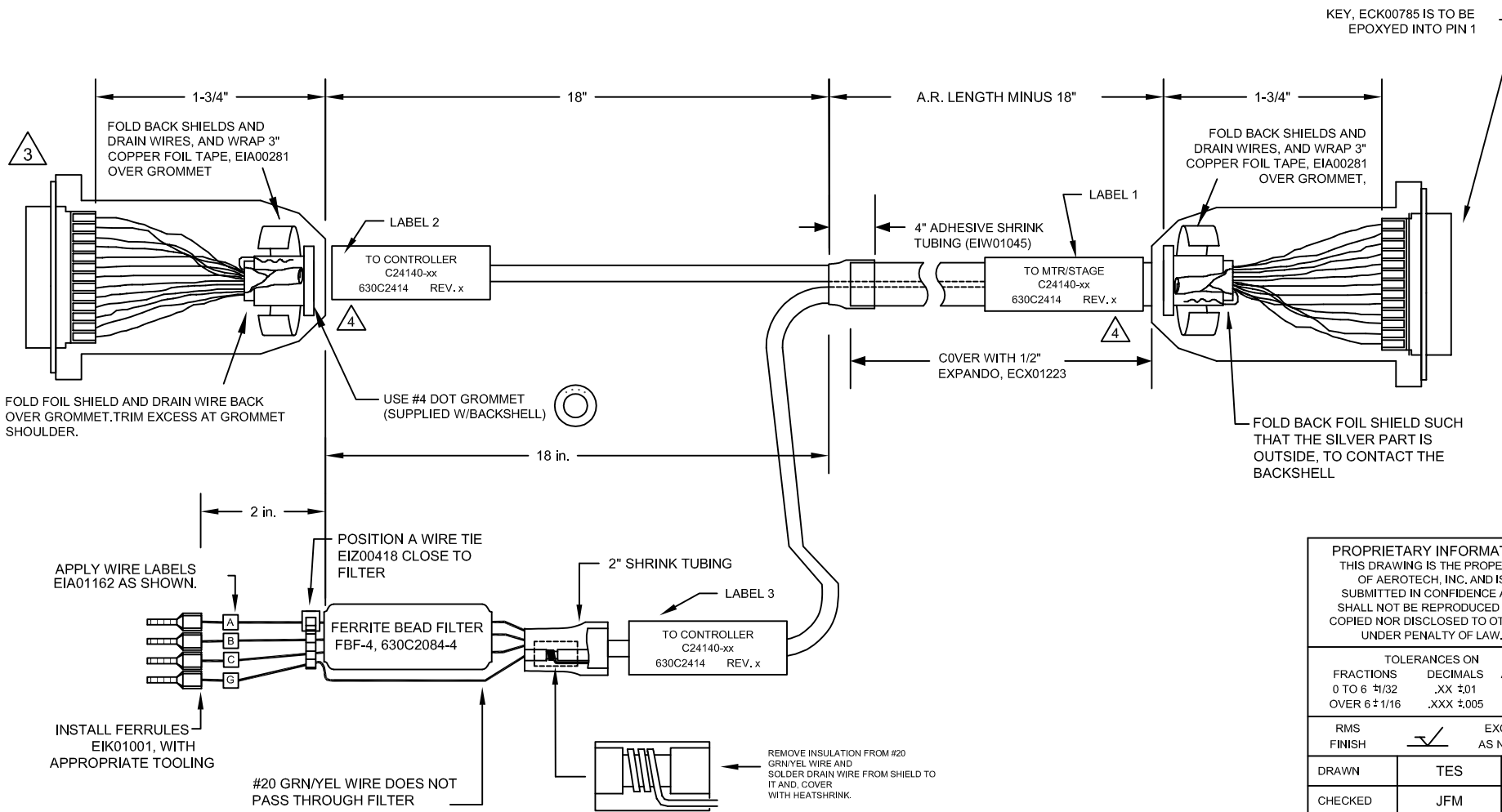
ADD GOLD JUMPER
EIK00351, 3 PLS.

ECX01009
16 COND., #24

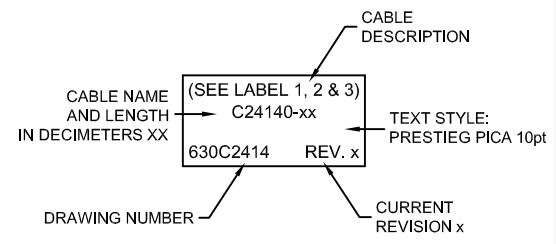
UNUSED WIRES:
None

ECX01217
4 COND., #20

* DENOTES FROM ECX01217 CABLE



- 6 MULTIPLE WIRES TO A PIN
SOLDER SPLICE/HEATSHRINK, USE #24 WIRE,
VIO FOR 5V PINS, AND GRN FOR COMMON PINS
- 5 ADD THREE CABLE LABELS, EIA00113
- 4 VERIFY GROMMET IS SECURED TIGHTLY AROUND
CABLE. IF NECESSARY BUILD UP WITH
SHRINK TUBING.
- 3 FOR CRIMP TOOL USE AMP HANDLE ASSY 58074-1
WITH AMP HEAD ASSY 58063-2
- 1 STARTING CABLE LENGTH SHOULD BE 5 IN
LONGER THAN TOTAL LENGTH OF CABLE. LENGTH
OF CABLE IS DESIGNATED BY THE (XX) IN
CABLE NAME.



PROPRIETARY INFORMATION
THIS DRAWING IS THE PROPERTY
OF AEROTECH, INC. AND IS
SUBMITTED IN CONFIDENCE AND
SHALL NOT BE REPRODUCED NOR
COPIED NOR DISCLOSED TO OTHERS
UNDER PENALTY OF LAW.

TOLERANCES ON		
FRACTIONS	DECIMALS	ANGLES
0 TO 6 ±1/32	.XX ±01	± 0-30'
OVER 6 ±1/16	.XXX ±005	

RMS FINISH	EXCEPT AS NOTED
✓	

DRAWN	TES	7/9/13
CHECKED	JFM	7/9/13
APPD.	JFM	7/9/13

AEROTECH AEROTECH, INC. 101 Zeta Drive
Pittsburgh, PA. 15238
(412) 963-7470
www.aerotech.com

**MPS SERIES STEPPER STAGE TO Ndrive
FEEDBACK & MOTOR CABLE
SM MTR + FB-25D FLB-25D-3.5ARMS-MAX110DM**

PART CODE	SIZE	REV.
C24140	C	A

SCALE NTS FILE NAME 630C2414.Dwg SHEET 1 OF 1