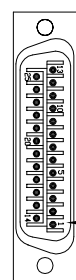


REVISIONS		DRAWN	DATE
REV.	DESCRIPTION	JFM	12/22/2014
A	Added ECN 16294		

25-PIN D, MALE, ECK00786
BACKSHELL, ECK00656
ADD SCREWLOCKS

WIRE SIDE VIEW



PIN 1

PIN	WIRE	SIGNAL
13	-	-
12	WHT/BRN	CW/+LMT
11	-	-
10	-	-
9	-	-
8	-	-
7	ORN	MRK
6	WHT/ORN	MKR-N
5	-	-
4	WHT/GRN	ID
3	WHT	ENC +5V
	VIO	
	BRN	
2	RED	THERMISTOR
1	-	-
CASE	SHIELD/DRAIN	SHIELD
14	YEL	COS
15	WHT/YEL	COS-N
16	-	-
17	BLU	SIN
18	WHT/BLU	SIN-N
19	-	-
20	GRY	LMT COM
21	BLK	ENC COM
	GRN	
22	-	-
23	-	-
24	WHT/GRY	CCW/-LMT
25	-	-

ECX01009
16 COND., #24

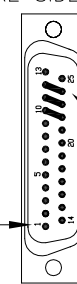
UNUSED WIRES:
NONE

ECX01217
4 COND., #20

SIGNAL	WIRE	PIN
-	-	13
øB	JMP TO PIN 24	12
øA	JMP TO PIN 23	11
øA, øB RETURN	JMP TO PIN 22	10
-	-	9
-	-	8
CCW/-LMT	WHT/GRY	7
LMT COM	GRY	6
ENC COM	BLK	5
	GRN	
MRK-N	WHT/ORN	4
SIN-N	WHT/BLU	3
COS-N	WHT/YEL	2
KEY	KEY	1
BOTH SHIELDS, FRAME	* #20 GRN/YEL	CASE
COS	YEL	14
SIN	BLU	15
MRK	ORN	16
ENC +5V	WHT	17
	VIO	
	BRN	
ID	WHT/GRN	18
CW/+LMT	WHT/BRN	19
THERMISTOR	RED	20
-	-	21
øA, øB RETURN	* #20 WHT	22
øA	* #20 BLK	23
øB	* #20 RED	24
-	-	25

* DENOTES FROM ECX01217 CABLE

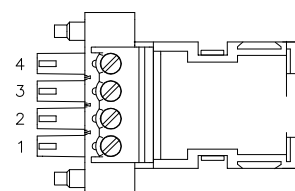
25-PIN D, FEMALE, ECK00300
BACKSHELL, ECK00656
JACKSOCKETS, ECK00129
WIRE SIDE VIEW



PIN 1

ADD GOLD JUMPER
EIK00351, 3 PLS.

ADD GOLD JUMPER
EIK00351, 3 PLS.

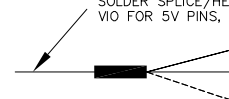


4 PIN TERMINAL BLOCK W/COVER ECK01523
HOUSING, ECK01520

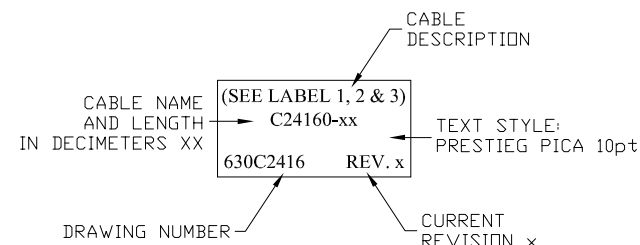
LABEL	WIRE	SIGNAL
4	#20 WHT	øA, øB RETURN
3	#20 RED	øB
2	#20 BLK	øA
1	#20 GRN/YEL	FRAME



MULTIPLE WIRES TO A PIN
SOLDER SPlice/HEATSHRINK. USE #24 WIRE.
VIO FOR 5V PINS, AND GRN FOR COMMON PINS



ADD THREE CABLE LABELS, EIA00113



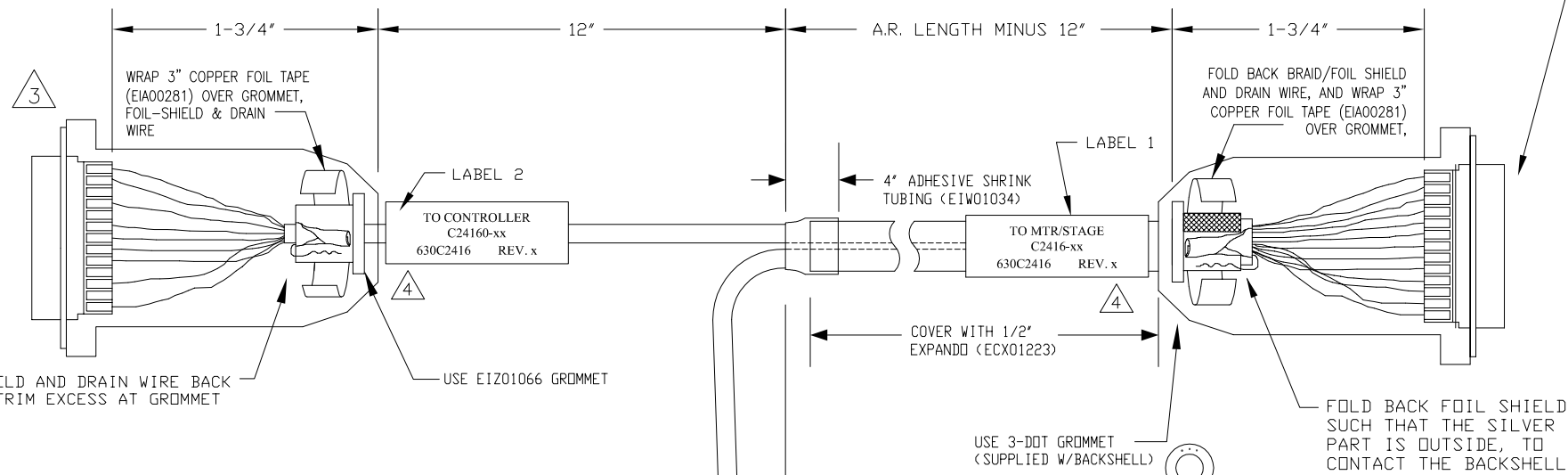
VERIFY GROMMET IS SECURED TIGHTLY AROUND CABLE. IF NECESSARY BUILD UP WITH SHRINK TUBING.



FOR CRIMP TOOL USE AMP HANDLE ASSY 58074-1 WITH AMP HEAD ASSY 58063-2

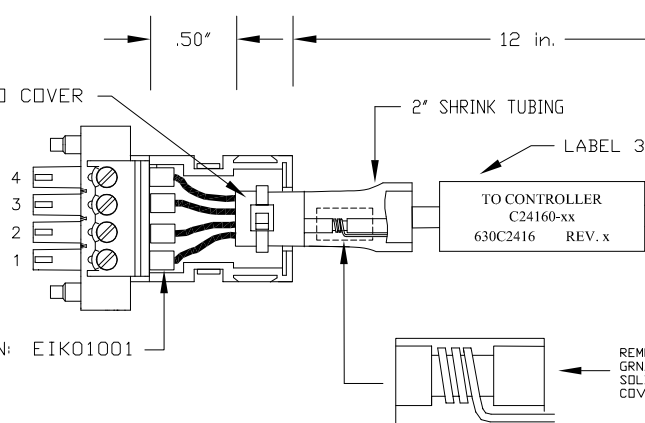


STARTING CABLE LENGTH SHOULD BE 5 IN LONGER THAN TOTAL LENGTH OF CABLE. LENGTH OF CABLE IS DESIGNATED BY THE (XX) IN CABLE NAME.



FOLD FOIL SHIELD AND DRAIN WIRE BACK OVER GROMMET. TRIM EXCESS AT GROMMET SHOULDER.

WIRE TIE (E1Z00418) TO COVER



PROPRIETARY INFORMATION
THIS DRAWING IS THE PROPERTY OF AEROTECH, INC. AND IS SUBMITTED IN CONFIDENCE AND SHALL NOT BE REPRODUCED NOR COPIED NOR DISCLOSED TO OTHERS UNDER PENALTY OF LAW.



AEROTECH, INC. 101 Zeta Drive
Pittsburgh, PA. 15238
(412)963-7470
www.aerotech.com

TOLERANCES ON		
FRACTIONS	DECIMALS	ANGLES
0 TO 6 ± 1/32	.XX ± .01	± 0-30'
OVER 6 ± 1/16	.XXX ± .005	
RMS FINISH	EXCEPT AS NOTED	

MPS SERIES STEPPER STAGE TO Epaq
FEEDBACK & MOTOR CABLE
SM & FB-25DU 4TS-25DU-MAX110DM

DRAWN	CHECKED	APPD.	PART CODE	SIZE	REV.
JFM	TES	JFM	C24160	C	A
SCALE NTS			FILE NAME	SHEET	1 OF 1

630C2416