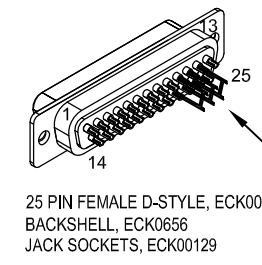


REVISIONS		DRAWN	DATE
REV.	DESCRIPTION		
A	Added ECN 16294	JFM	12/22/2014
B	Added ECO 69	JFM	8/28/2017

PIN	WIRE	SIGNAL
13	-	-
12	WHT/BRN	CW+LMT
11	-	-
10	-	-
9	-	-
8	-	-
7	ORN	MRK
6	WHT/ORN	MKR-N
5	-	-
4	WHT/GRN	ID
3	WHT	ENC +5V
	VIO	
	BRN	
2	RED	THERMISTOR
1	-	-
CASE	SHIELD/DRAIN	SHIELD

SIGNAL	WIRE	PIN
-	-	13
ØB	JMP TO PIN 24	12
ØA	JMP TO PIN 23	11
ØA, ØB RETURN	JMP TO PIN 22	10
-	-	9
-	-	8
CCW-LMT	WHT/GRY	7
LMT COM	GRY	6
ENC COM	BLK	5
	GRN	
MRK-N	WHT/ORN	4
SIN-N	WHT/BLU	3
COS-N	WHT/YEL	2
KEY	KEY	1
BOTH SHIELDS, FRAME	* #20 GRN/YEL	CASE



ADD GOLD JUMPER
EIK00351, 3 PLS.

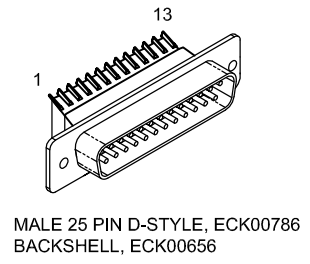
ADD GOLD JUMPER
EIK00351, 3 PLS.

* DENOTES FROM ECX01217 CABLE

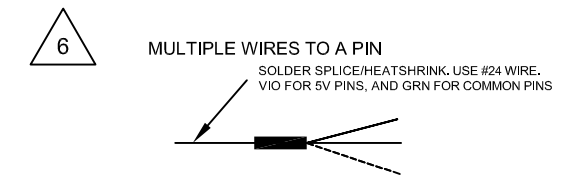
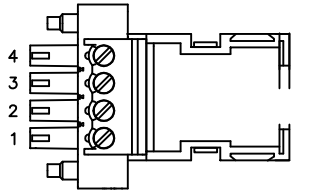
ECX01009
16 COND., #24

ECX01217
4 COND., #20

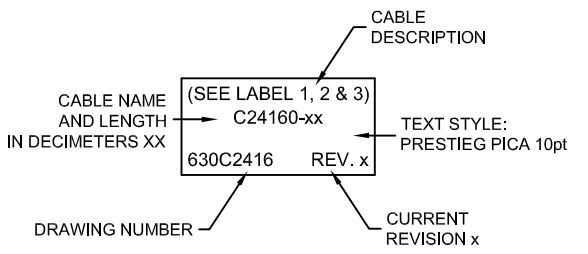
UNUSED WIRES:
NONE



LABEL	WIRE	SIGNAL
4	#20 WHT	ØA, ØB RETURN
3	#20 RED	ØB
2	#20 BLK	ØA
1	#20 GRN/YEL	FRAME



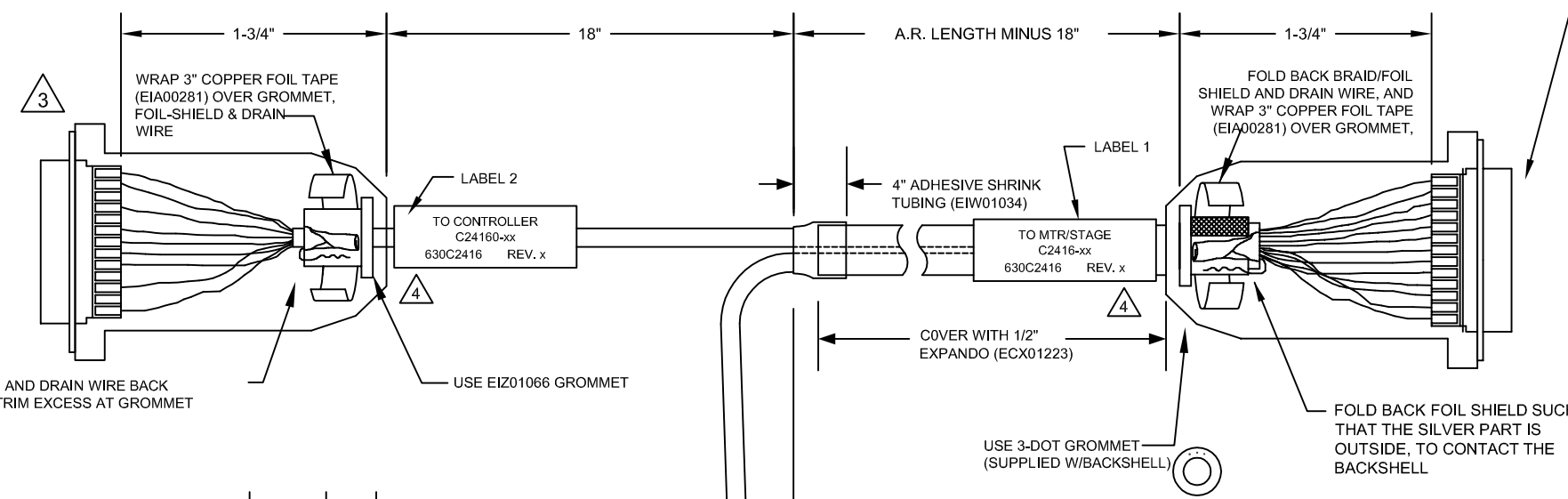
5 ADD THREE CABLE LABELS, EIA00113



4 VERIFY GROMMET IS SECURED TIGHTLY AROUND CABLE. IF NECESSARY BUILD UP WITH SHRINK TUBING.

3 FOR CRIMP TOOL USE AMP HANDLE ASSY 58074-1 WITH AMP HEAD ASSY 58063-2

1 STARTING CABLE LENGTH SHOULD BE 5 IN LONGER THAN TOTAL LENGTH OF CABLE. LENGTH OF CABLE IS DESIGNATED BY THE (XX) IN CABLE NAME.



FOLD FOIL SHIELD AND DRAIN WIRE BACK OVER GROMMET. TRIM EXCESS AT GROMMET SHOULDER.

WIRE TIE (EIZ00418) TO COVER

2 FERRULES P/N: EIK01001 (4 PLS)

REMOVE INSULATION FROM #20 GRN/YEL WIRE AND SOLDER SHIELD TO IT AND, COVER WITH HEATSHRINK.

PROPRIETARY INFORMATION
THIS DRAWING IS THE PROPERTY OF AEROTECH, INC. AND IS SUBMITTED IN CONFIDENCE AND SHALL NOT BE REPRODUCED NOR COPIED NOR DISCLOSED TO OTHERS UNDER PENALTY OF LAW.

AEROTECH
AEROTECH, INC. 101 Zeta Drive
Pittsburgh, PA. 15238
(412)963-7470
www.aerotech.com

TOLERANCES ON		
FRACTIONS	DECIMALS	ANGLES
0 TO 6 ±1/32	.XX ±01	± 0-30°
OVER 6 ±1/16	.XXX ±005	

RMS FINISH EXCEPT AS NOTED

DRAWN	JFM	7/3/2013
CHECKED	TES	7/3/2013
APPD.	JFM	7/3/2013

MPS SERIES STEPPER STAGE TO Epaq
FEEDBACK & MOTOR CABLE
SM + FB-4TS 25D-25DJS-3.5ARMS-MAX110DM

PART CODE	SIZE	REV.
C24160	C	B
SCALE	FILE NAME	SHEET
NTS	630C2416.Dwg	1 OF 1