

REVISIONS			
REV.	DESCRIPTION	DATE	DRAWN

PIN	WIRE	SIGNAL
13	-	-
12	#24 WHT	CW/+ LMT
11	#24 BLU	HALL C
10	#24 YEL	HALL A
9	-	-
8	-	-
7	#24 BRN	MKR
6	#24 BLK	MKR-N
5	#24 ORN	HALL B
4	#24 PNK	STAGE ID
3	#22 WHT/BLU	ENC +5V
2	#22 WHT/BRN	ENC COM
1	#24 WHT/RED	THERM
	#22 GRN/WHT	OUTER SHIELD

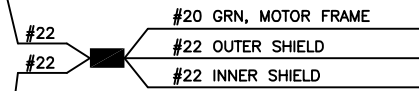
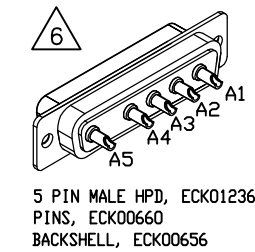
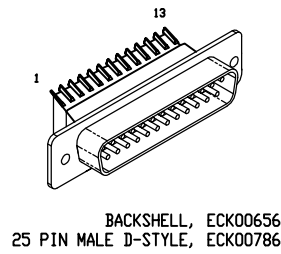
PIN	WIRE	SIGNAL
A5	#22 GRN/WHT	INNER SHIELD
A3	#20 GRN	FRM GND
A3	#20 WHT	MTR ØC
A2	#20 BRN	MTR ØB
A2	#20 ORN	MTR ØA
A1	#20 BLU	MTR ØA
A1	#20 YEL	MTR ØA

SIGNAL	WIRE	PIN
MTR Ø C	#20 WHT *	13
MTR Ø B	#20 RED *	12
MTR Ø A	#20 BLU *	11
FRAME & SHIELDS	#22 GRN	10
HALL C	#24 BLU	9
HALL A	#24 YEL	8
CCW/- LMT	#24 GRY	7
LMT COM	#22 WHT/GRN	6
ENC COM	#22 WHT/YEL	5
MKR-N	#24 BLK	4
SIN-N	#24 RED	3
COS-N	#24 VIO	2
NO CONNECTION	INSERT KEY	1
COS	#24 WHT/BLK	14
SIN	#24 GRN	15
MKR	#24 BRN	16
ENC +5V	#22 WHT/BRN	17
	#22 WHT/BLU	
	#24 WHT/VIO	
STAGE ID	#24 PNK	18
CW/+ LMT	#24 WHT	19
THERM	#24 WHT/RED	20
HALL B	#24 ORN	21
FRAME & SHIELDS	#22 GRN	22
MTR Ø A	#20 YEL *	23
MTR Ø B	#20 ORN *	24
MTR Ø C	#20 BRN *	25

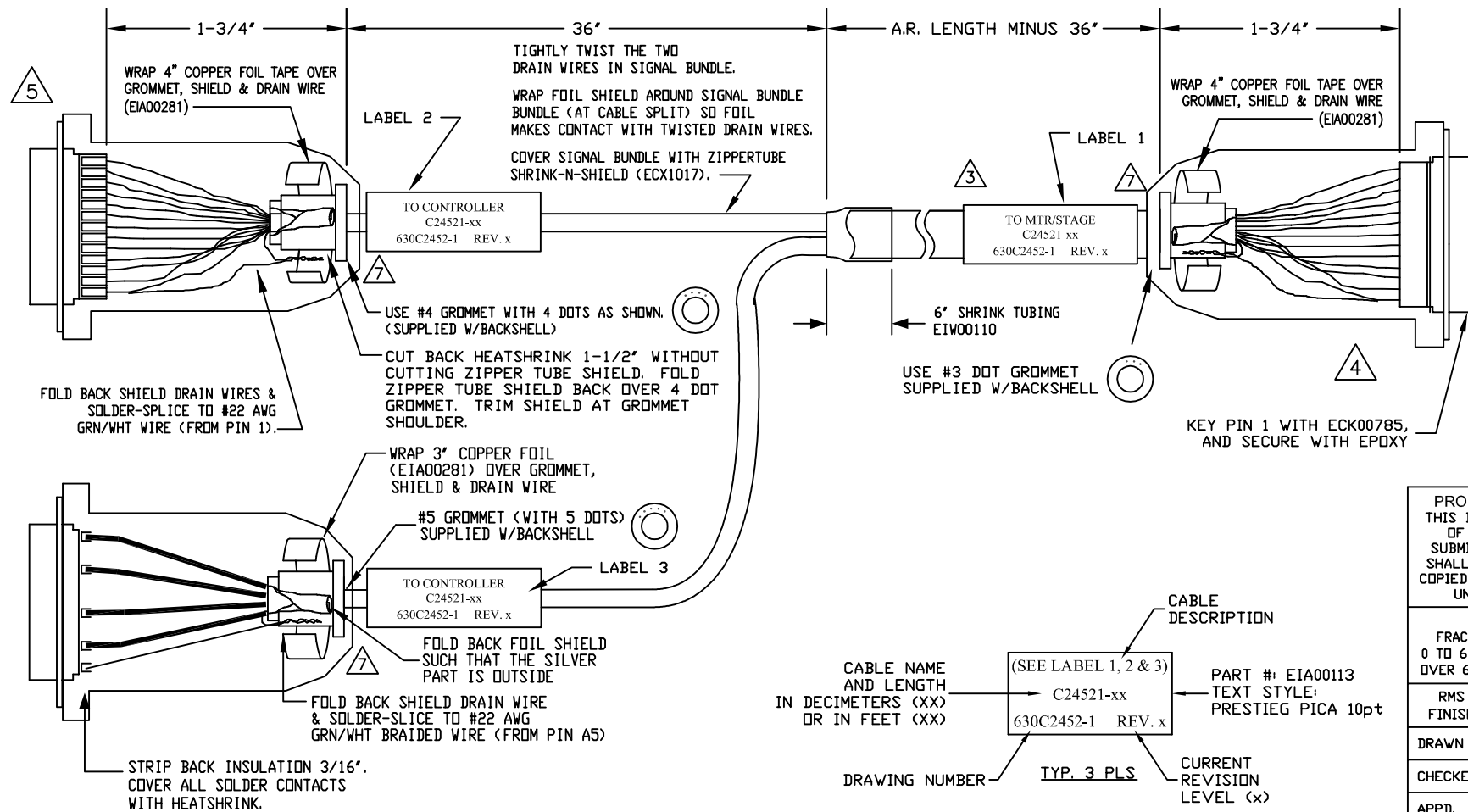
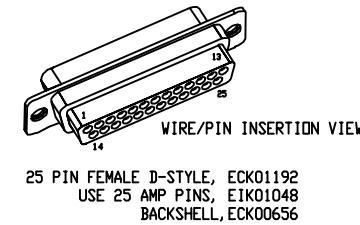
ECX00445

UNUSED WIRES:  
None

\* INDICATES WIRES FROM INNER BUNDLE



SPLICE 2 PIECES OF #22 GREEN TO INNER, OUTER SHIELDS, & MOTOR FRAME THEN TERMINATE TO IDC CON.



PROPRIETARY INFORMATION  
THIS DRAWING IS THE PROPERTY OF AEROTECH, INC. AND IS SUBMITTED IN CONFIDENCE AND SHALL NOT BE REPRODUCED NOR COPIED NOR DISCLOSED TO OTHERS UNDER PENALTY OF LAW.



AEROTECH, INC. 101 Zeta Drive  
Pittsburgh, PA. 15238  
(412)963-7470  
www.aerotech.com

TOLERANCES ON		
FRACTIONS	DECIMALS	ANGLES
0 TO 6 ± 1/32	.XX ± .01	± 0-30°
OVER 6 ± 1/16	.XXX ± .005	

FEEDBACK & BRUSHLESS MOTOR CABLE			
175 DECIMETERS (57") MAX LENGTH			
CABLE: BL MTR & FB-25DU 5DU-25DU-MAX175DM			
DRAWN	11/13/2013	JFM	PART CODE
CHECKED	11/13/2013	AGS	SIZE
APPD.	11/13/2013	JFM	SCALE NTS
DRAWING NUMBER		C24521-XX	FILE NAME 630C2452-101.Dwg
CABLE NAME AND LENGTH IN DECIMETERS (XX) OR IN FEET (XX)		630C2452-1	SHEET 1 OF 1
PART #: EIA00113 TEXT STYLE: PRESTIEG PICA 10pt			
DRAWING NUMBER			
CURRENT REVISION LEVEL (x)			