

REV.		DESCRIPTION		REVISIONS		DRAWN	DATE
A		ADDED	ECO 69	JFM			6/7/2018

PIN	WIRE	SIGNAL
13	-	-
12	#26 W/BRN	CW/+ LMT
11	#26 WHT	HALL C
10	#26 BRN	HALL A
9	-	-
8	-	-
7	#26 ORN	MKR
6	#26 W/ORN	MKR-N
5	#26 GRN	HALL B
4	#24 RED	STAGE ID
3	-	+5V
2	#22 W/GRN	THERM
CASE	-	SHIELD

PIN	WIRE	SIGNAL
CASE	-	SHIELD
A5	#24 YEL	FRM GND
A3	#24 BLU	MTR ØC
A2	#24 RED	MTR ØB
A1	#24 BRN	MTR ØA

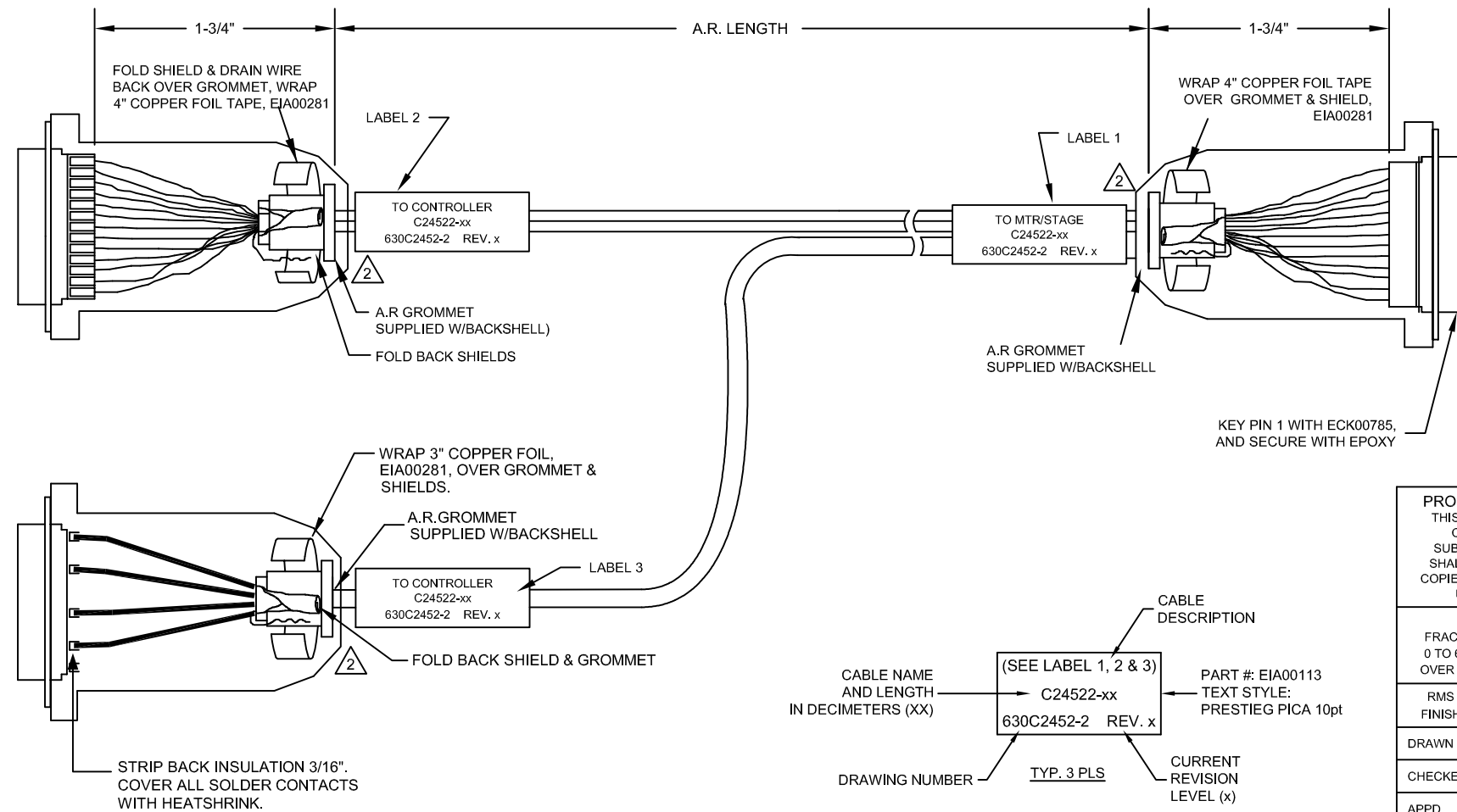
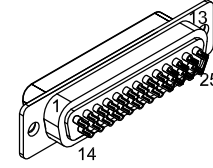
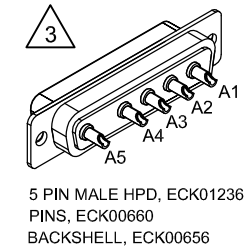
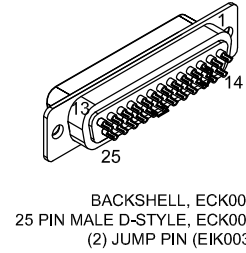
SIGNAL	WIRE	PIN
MTR Ø C	#24 VIO	13
MTR Ø B	#24 ORN	12
MTR Ø A	#24 BRN	11
FRM GND	#24 YEL	10
HALL C	#26 WHT	9
HALL A	#26 BRN	8
CCW/- LMT	#26 W/GRY	7
LMT COM	#22 YEL/GRN	6
ENC COM	#22 BLK	5
MKR-N	#26 W/ORN	4
SIN-N	#26 W/BLU	3
COS-N	#26 W/YEL	2
NO CONNECTION	INSERT KEY	1
COS	#26 YEL	14
SIN	#26 BLU	15
MKR	#26 ORN	16
+5V	#22 WHT	17
	#22 RED	
STAGE ID	#24 RED	18
CW/+ LMT	#26 W/BRN	19
THERM	#26 W/GRN	20
HALL B	#26 GRN	21
SHIELD	-	CASE
FRM GND	#24 GRN	22
MTR Ø A	#24 BLK	23
MTR Ø B	#24 RED	24
MTR Ø C	#24 BLU	25

ECX01124, 4C #22

ECX01126, 12C #26 / 4C #24

UNUSED WIRES:
#24 VIO, #24 BLK,
#24 GRN

ECX00569, 8C #24



- 1 STARTING CABLE LENGTH SHOULD BE 5 IN LONGER THAN TOTAL LENGTH OF CABLE. LENGTH OF CABLE IS DESIGNATED BY THE (XX) IN CABLE NAME.
- 2 VERIFY GROMMET IS SECURED TIGHTLY AROUND CABLE. IF NECESSARY BUILD UP WITH SHRINK TUBING.
- 3 INSTALL ALL PINS IN MOTOR CONNECTOR.

PROPRIETARY INFORMATION THIS DRAWING IS THE PROPERTY OF AEROTECH, INC. AND IS SUBMITTED IN CONFIDENCE AND SHALL NOT BE REPRODUCED NOR COPIED NOR DISCLOSED TO OTHERS UNDER PENALTY OF LAW.		AEROTECH, INC. 101 Zeta Drive Pittsburgh, PA. 15238 (412)963-7470 www.aerotech.com	
TOLERANCES ON FRACTIONS DECIMALS ANGLES 0 TO 6 ±1/32 .XX ±01 ± 0-30' OVER 6 ±1/16 .XXX ±005		FEEDBACK & BRUSHLESS MOTOR CABLE	
RMS FINISH <input checked="" type="checkbox"/> EXCEPT AS NOTED		BL MTR + FB-5D 25D-25D-5ARMS-HF65-MAX150DM	
DRAWN 4/12/2017 TES	CHECKED 4/12/2017 AGS	PART CODE C24522	SIZE C
APPD. 4/12/2017 TES	SCALE NTS	FILE NAME 630C2452-2.Dwg	REV. A
CABLE NAME AND LENGTH IN DECIMETERS (XX) DRAWING NUMBER TYP. 3 PLS		CABLE DESCRIPTION (SEE LABEL 1, 2 & 3) C24522-xx 630C2452-2 REV. x	PART #: EIA00113 TEXT STYLE: PRESTIG PICA 10pt CURRENT REVISION LEVEL (x)