

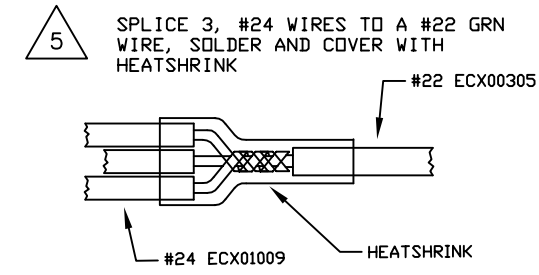
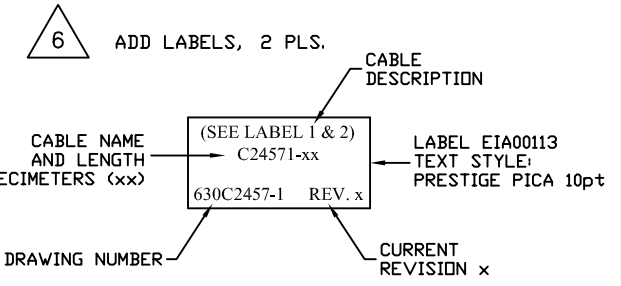
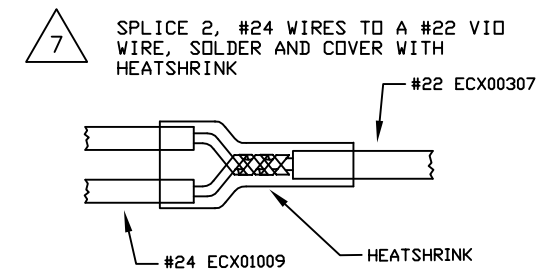
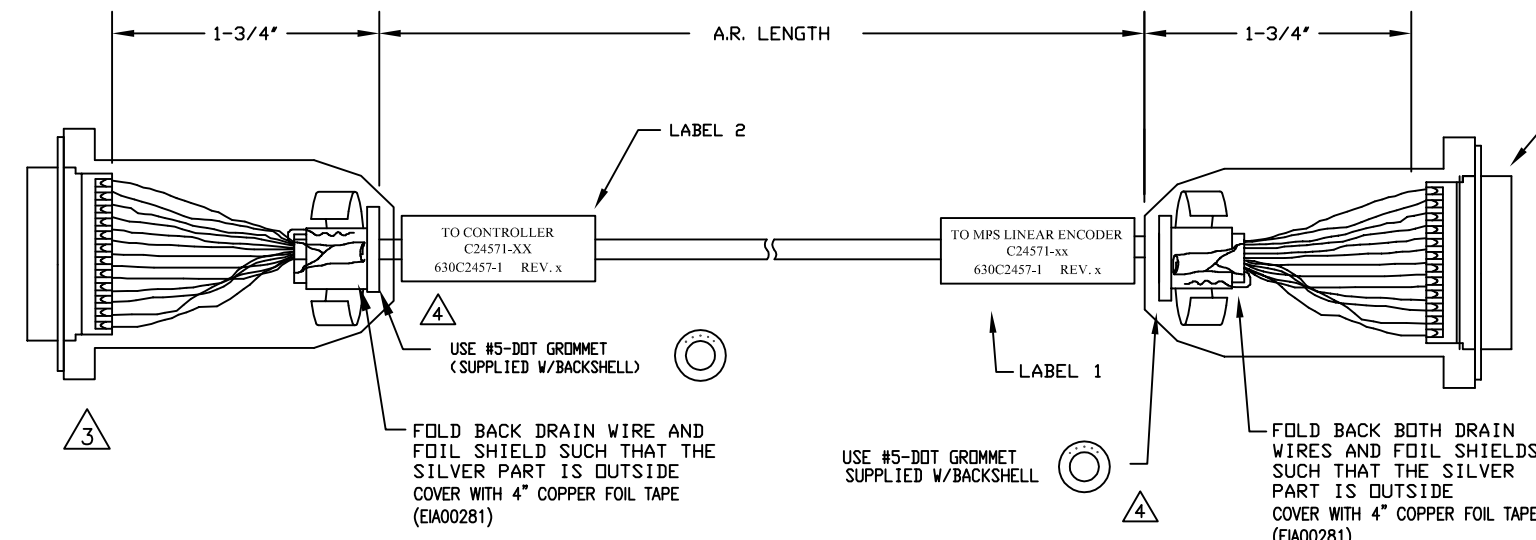
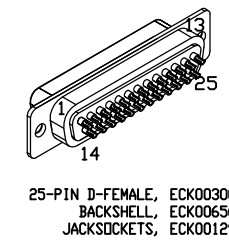
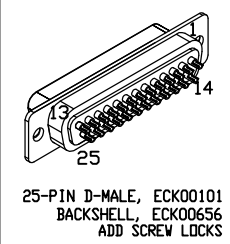
REVISIONS			
REV.	DESCRIPTION	DRAWN	DATE

PIN	WIRE	SIGNAL
13	-	-
12	-	-
11	-	-
10	-	-
9	-	-
8	-	-
7	ORN	MKR
6	W/ORN	MKR-N
5	-	-
4	-	-
3	VIO	ENC +5V
2	RED	ENC +5V
1	-	-
CASE	SHIELD	SHIELD
14	YEL	COS
15	W/YEL	COS-N
16	-	-
17	BLU	SIN
18	W/BLU	SIN-N
19	-	-
20	GRY	LMT COM
21	WHT	ENC COM
	BRN	ENC COM
	BLK	ENC COM
22	-	-
23	-	-
24	-	-
25	-	-

SIGNAL	WIRE	PIN
-	-	13
-	-	12
-	-	11
-	-	10
-	-	9
-	-	8
-	-	7
LMT COM	GRY	6
ENC COM	WHT	5
ENC COM	BRN	
ENC COM	BLK	
MKR-N	W/ORN	4
SIN-N	W/BLU	3
COS-N	W/YEL	2
KEY	KEY	1
SHIELD	SHIELD	CASE
COS	YEL	14
SIN	BLU	15
MKR	ORN	16
ENC +5V	VIO	17
ENC +5V	RED	18
-	-	19
-	-	20
-	-	21
-	-	22
-	-	23
-	-	24
-	-	25

ECX01009
#24 x16

UNUSED WIRES:
GRN, W/GRN,
W/GRY, W/BRN



- 4 VERIFY GROMMET IS SECURED TIGHTLY AROUND CABLE. IF NECESSARY BUILD UP WITH SHRINK TUBING.
- 3 FOR CRIMP TOOL USE AMP HANDLE ASSY 58074-1 WITH AMP HEAD ASSY 58063-2
- 1 STARTING CABLE LENGTH SHOULD BE 5 IN LONGER THAN TOTAL LENGTH OF CABLE. LENGTH OF CABLE IS DESIGNATED BY THE (XX) IN CABLE NAME.

PROPRIETARY INFORMATION
THIS DRAWING IS THE PROPERTY
OF AEROTECH, INC. AND IS
SUBMITTED IN CONFIDENCE AND
SHALL NOT BE REPRODUCED NOR
COPIED NOR DISCLOSED TO OTHERS
UNDER PENALTY OF LAW.

AEROTECH
AEROTECH, INC. 101 Zeta Drive
Pittsburgh, PA. 15238
(412)963-7470
www.aerotech.com

TOLERANCES ON FRACTIONS DECIMALS ANGLES		
0 TO 6 ± 1/32	.XX ± .01	± 0-30'
OVER 6 ± 1/16	.XXX ± .005	
RMS FINISH	EXCEPT AS NOTED	
DRAWN	JFM	12/16/2013
CHECKED	TES	12/16/2013
APPD.	JFM	12/16/2013

MPS SERIES STAGE LINEAR ENCODER FEEDBACK DC FB-25DU 25DU-MAX100DM			
PART CODE	SIZE	REV.	
C24571-XX	C	-	
630C2457-1			
SCALE NTS	FILE NAME 630C2457-101.Dwg	SHEET	1 OF 1