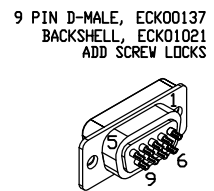


REVISIONS			
REV.	DESCRIPTION	DRAWN	DATE

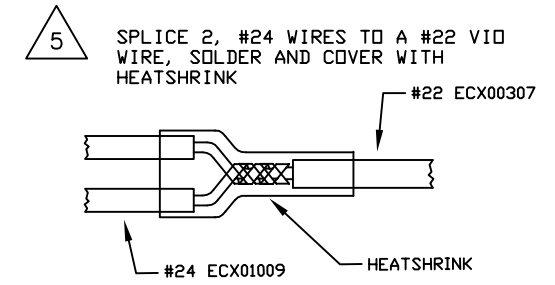
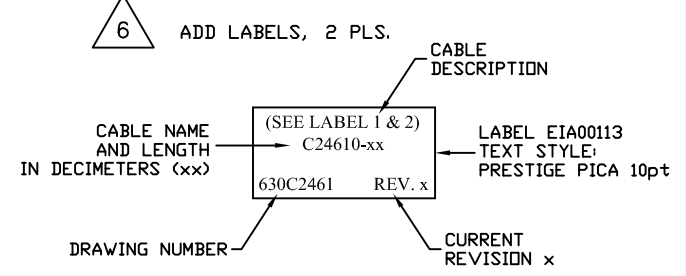
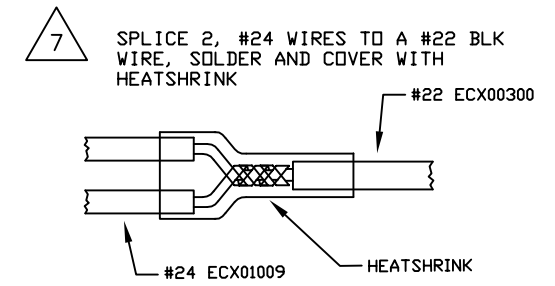
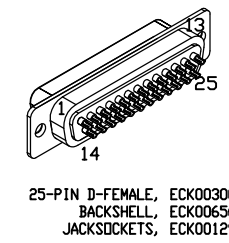


PIN	WIRE	SIGNAL
5	GRY	COM
4	VIO	ENC +5V
3	ORN	MRK
2	YEL	COS
1	BLU	SIN
CASE	SHIELD	SHIELD
6	W/BLU	SIN-N
7	W/YEL	COS-N
8	W/ORN	MRK-N
9	BLK	COM

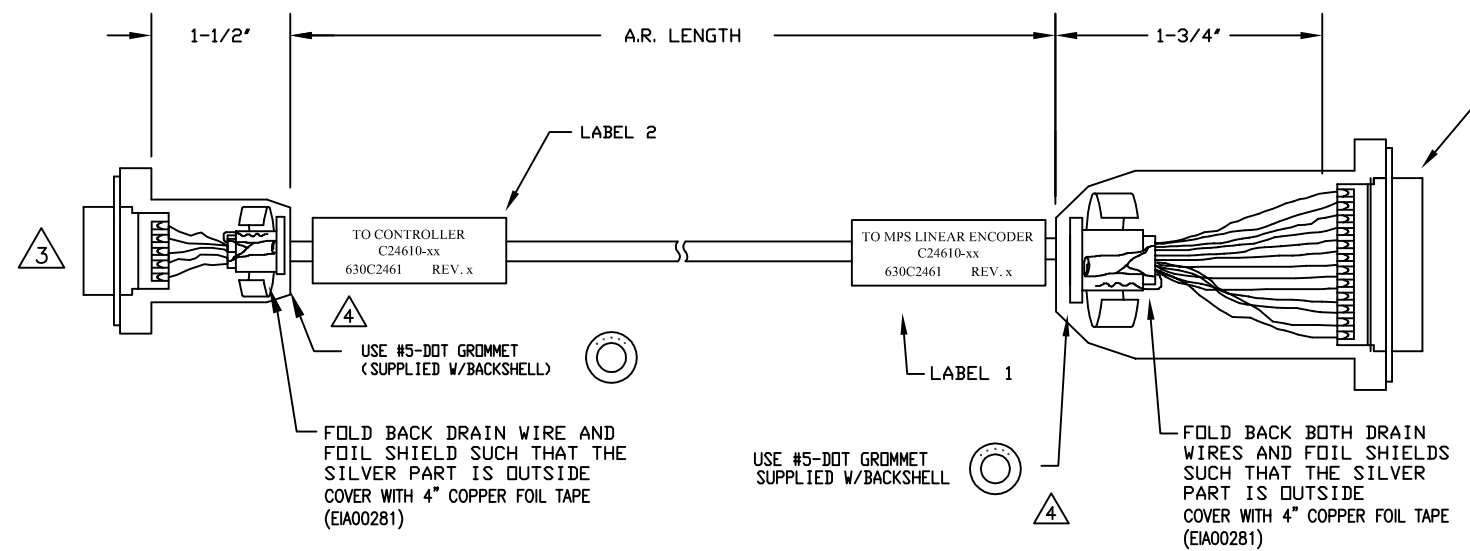
ECX01009  
#24 x16

UNUSED WIRES:  
GRN, W/GRN,  
W/GRY, BRN,  
W/BRN, WHT

SIGNAL	WIRE	PIN
-	-	13
-	-	12
-	-	11
-	-	10
-	-	9
-	-	8
-	-	7
-	-	6
ENC COM	GRY	5
ENC COM	BLK	5
MKR-N	W/ORN	4
SIN-N	W/BLU	3
COS-N	W/YEL	2
KEY	KEY	1
SHIELD	SHIELD	CASE
COS	YEL	14
SIN	BLU	15
MKR	ORN	16
ENC +5V	VIO	17
ENC +5V	RED	17
-	-	18
-	-	19
-	-	20
-	-	21
-	-	22
-	-	23
-	-	24
-	-	25



- 4 VERIFY GROMMET IS SECURED TIGHTLY AROUND CABLE. IF NECESSARY BUILD UP WITH SHRINK TUBING.
- 3 FOR CRIMP TOOL USE AMP HANDLE ASSY 58074-1 WITH AMP HEAD ASSY 58063-2
- 1 STARTING CABLE LENGTH SHOULD BE 5 IN LONGER THAN TOTAL LENGTH OF CABLE. LENGTH OF CABLE IS DESIGNATED BY THE (XX) IN CABLE NAME.



PROPRIETARY INFORMATION  
THIS DRAWING IS THE PROPERTY  
OF AEROTECH, INC. AND IS  
SUBMITTED IN CONFIDENCE AND  
SHALL NOT BE REPRODUCED NOR  
COPIED NOR DISCLOSED TO OTHERS  
UNDER PENALTY OF LAW.



TOLERANCES ON	FRACTIONS	DECIMALS	ANGLES
0 TO 6	± 1/32	.XX ± .01	± 0-30'
OVER 6	± 1/16	.XXX ± .005	

RMS FINISH  EXCEPT AS NOTED

MPS75SLE SERIES STAGE  
LINEAR ENC. FDBK TO Npaq MR AUX ENC  
CABLE: ENC-9DU-25DU-MAX80DM

DRAWN	JFM	2/27/2014	PART CODE	SIZE	REV.
CHECKED	TES	2/27/2014	C24610-XX	C	-
APPD.	JFM	2/27/2014	630C2461		